

---

# CASA GRANDE UNION HIGH SCHOOL DISTRICT NO. 82

---

## Annual Comprehensive Financial Report

Fiscal Year Ended June 30, 2022



**CASA GRANDE UNION HIGH SCHOOL DISTRICT NO. 82**

**CASA GRANDE, ARIZONA**

**ANNUAL COMPREHENSIVE FINANCIAL REPORT  
FOR THE FISCAL YEAR ENDED JUNE 30, 2022**

Issued by:  
Business and Finance Department

# CASA GRANDE UNION HIGH SCHOOL DISTRICT NO. 82

## TABLE OF CONTENTS

<u>INTRODUCTORY SECTION</u>	<u>Page</u>
Letter of Transmittal	1
ASBO Certificate of Excellence	7
GFOA Certificate of Achievement	8
Organizational Chart	9
List of Principal Officials	10
 <u>FINANCIAL SECTION</u>	
INDEPENDENT AUDITOR’S REPORT	13
MANAGEMENT’S DISCUSSION AND ANALYSIS (MD&A)	19
BASIC FINANCIAL STATEMENTS	
Government-Wide Financial Statements:	
Statement of Net Position	32
Statement of Activities	33
Fund Financial Statements:	
Balance Sheet – Governmental Funds	36
Reconciliation of the Balance Sheet – Governmental Funds to the Statement of Net Position	39
Statement of Revenues, Expenditures and Changes in Fund Balances – Governmental Funds	40
Reconciliation of the Statement of Revenues, Expenditures and Changes in Fund Balances – Governmental Funds to the Statement of Activities	42
Notes to Financial Statements	43

**CASA GRANDE UNION HIGH SCHOOL DISTRICT NO. 82**

**TABLE OF CONTENTS**

<b><u>FINANCIAL SECTION</u></b>	<b><u>Page</u></b>
<b>REQUIRED SUPPLEMENTARY INFORMATION</b>	
Schedule of Revenues Expenditures and Changes in Fund Balances – Budget and Actual:	
General Fund	67
Other Federal Projects Fund	68
Food Service Fund	69
Pension Schedules	70
Notes to Required Supplementary Information	72
<b>COMBINING AND INDIVIDUAL FUND FINANCIAL STATEMENTS AND SCHEDULES</b>	
Governmental Funds:	
Combining Balance Sheet – All Non-Major Governmental Funds – By Fund Type	76
Combining Statement of Revenues, Expenditures and Changes in Fund Balances – All Non-Major Governmental Funds – By Fund Type	78
Special Revenue Funds:	
Combining Balance Sheet	82
Combining Statement of Revenues, Expenditures and Changes in Fund Balances	88
Combining Schedule of Revenues, Expenditures and Changes in Fund Balances – Budget and Actual	94
Debt Service Fund:	
Schedule of Revenues, Expenditures and Changes in Fund Balance – Budget and Actual	118

# CASA GRANDE UNION HIGH SCHOOL DISTRICT NO. 82

## TABLE OF CONTENTS

<u>FINANCIAL SECTION</u>	<u>Page</u>
COMBINING AND INDIVIDUAL FUND FINANCIAL STATEMENTS AND SCHEDULES	
Capital Projects Funds:	
Combining Balance Sheet	120
Combining Statement of Revenues, Expenditures and Changes in Fund Balances	122
Combining Schedule of Revenues, Expenditures and Changes in Fund Balances – Budget and Actual	124
 <u>STATISTICAL SECTION</u>	
Financial Trends:	
Net Position by Component	131
Expenses, Program Revenues, and Net (Expense)/Revenue	132
General Revenues and Total Changes in Net Position	134
Fund Balances – Governmental Funds	136
Governmental Funds Revenues	138
Governmental Funds Expenditures and Debt Service Ratio	140
Other Financing Sources and Uses and Net Changes in Fund Balances – Governmental Funds	142
Revenue Capacity:	
Net Limited Assessed Value and Full Cash Value of Taxable Property by Class	143
Net Full Cash Assessed Value of Taxable Property by Class	144
Property Tax Assessment Ratios	145

**CASA GRANDE UNION HIGH SCHOOL DISTRICT NO. 82**

**TABLE OF CONTENTS**

<b><u>STATISTICAL SECTION</u></b>	<b><u>Page</u></b>
Direct and Overlapping Property Tax Rates	146
Principal Property Taxpayers	147
Property Tax Levies and Collections	148
Debt Capacity:	
Outstanding Debt by Type	149
Direct and Overlapping Governmental Activities Debt	150
Direct and Overlapping General Bonded Debt Ratios	150
Legal Debt Margin Information	151
Demographic and Economic Information:	
County-Wide Demographic and Economic Statistics	152
Principal Employers	153
Operating Information:	
Full-Time Equivalent District Employees by Type	154
Operating Statistics	156
Capital Assets Information	157

(This page intentionally left blank)

## **INTRODUCTORY SECTION**

(This page intentionally left blank)

# Casa Grande Union High School District

JEFF LAVENDER, Interim Superintendent

DR. MATTHEW STROM, Asst. Superintendent

RALPH BELLOC  
Facilities Director

GINA SALAZAR  
Business Services Director

VENESSA MORALES  
Curriculum & Instruction Director

LISA MILLER  
Career & Technical Education Director

SEAN CASEY  
Executive Director of Human Resources

CHRISTINA OGLE  
Federal Programs Director

DAVID GRIFFIS  
Information Technology Director

March 30, 2023

Citizens and Governing Board  
Casa Grande Union High School District No. 82  
1362 N. Casa Grande Avenue  
Casa Grande, AZ 85122

State law mandates that school districts required to undergo an annual single audit publish a complete set of financial statements presented in conformity with accounting principles generally accepted in the United States of America and audited in accordance with auditing standards generally accepted in the United States by a certified public accounting firm licensed in the State of Arizona. Pursuant to that requirement, we hereby issue the annual comprehensive financial report of the Casa Grande Union High School District No. 82 (District) for the fiscal year ended June 30, 2022.

This report consists of management's representations concerning the finances of the District. Consequently, management assumes full responsibility for the completeness and reliability of all of the information presented in this report. To provide a reasonable basis for making these representations, management of the District has established a comprehensive internal control framework that is designed both to protect the District's assets from loss, theft, or misuse and to compile sufficient reliable information for the preparation of the District's financial statements in conformity with accounting principles generally accepted in the United States of America. Because the cost of internal controls should not outweigh their benefits, the District's comprehensive framework of internal controls has been designed to provide reasonable rather than absolute assurance that the financial statements will be free of material misstatement. As management, we assert that, to the best of our knowledge and belief, this financial report is complete and reliable in all material respects.

The District's financial statements have been audited by Heinfeld, Meech & Co., P.C., a certified public accounting firm. The goal of the independent audit was to provide reasonable assurance that the financial statements of the District for the fiscal year ended June 30, 2022, are free of material misstatement. The independent audit involved examining, on a test basis, evidence supporting the amounts and disclosures in the financial statements; assessing the accounting principles used and significant estimates made by management; and evaluating the overall financial statement presentation. The independent auditors concluded, based upon the audit, that there was a reasonable basis for rendering an unmodified opinion that the District's financial statements for the fiscal year ended June 30, 2022, are fairly presented in conformity with accounting principles generally accepted in the United States of America.

The independent auditor's report is presented as the first component of the financial section of this report. The independent audit of the financial statements of the District was part of a broader, federally mandated Single Audit as required by the provisions of the Single Audit Act Amendments of 1996 and Title 2 U.S. *Code of Federal Regulations* (CFR) Part 200, *Uniform Administrative Requirements, Cost Principles, and Audit Requirements for Federal Awards* (Uniform Guidance). The standards governing Single Audit engagements require the independent auditor to report not only on the fair presentation of the financial statements, but also on the District's internal controls and compliance with legal requirements, with special emphasis on internal controls and legal requirements involving the administration of federal awards. These reports are available in a separately issued Single Audit Report.

Accounting principles generally accepted in the United States of America require that management provide a narrative introduction, overview, and analysis to accompany the basic financial statements in the form of Management's Discussion and Analysis (MD&A). This letter of transmittal is designed to complement the MD&A and should be read in conjunction with it. The District's MD&A can be found immediately following the report of the independent auditors.

## **PROFILE OF THE DISTRICT**

The District is one of 24 public school districts located in Pinal County, Arizona. It provides a program of public education from grade 9 through grade 12, with an estimated current enrollment of 3,800 for fiscal year 2022 and 4,000 for fiscal year 2023.

The District's Governing Board is organized under Section 15-321 of the Arizona Revised Statutes (A.R.S.). Management of the District is independent of other state or local governments. The County Treasurer collects taxes for the District, but exercises no control over its expenditures/expenses.

The membership of the Governing Board consists of five members elected by the public. Under existing statutes, the Governing Board's duties and powers include, but are not limited to, the acquisition, maintenance and disposition of school property; the development and adoption of a school program; and the establishment, organization and operation of schools. The Board also has broad financial responsibilities, including the approval of the annual budget, and the establishment of a system of accounting and budgetary controls.

The financial reporting entity consists of a primary government and its component units. A component unit is a legally separate entity that must be included in the reporting entity in conformity with generally accepted accounting principles. The District is a primary government because it is a special-purpose government that has a separately elected governing body, is legally separate, and is fiscally independent of other state or local governments. Furthermore, there are no component units combined with the District for financial statement presentation purposes, and the District is not included in any other governmental reporting entity.

Consequently, the District's financial statements include only the funds of those organizational entities for which its elected governing body is financially accountable. The District's major operations include education, student transportation, construction and maintenance of District facilities, food services, bookstore, and athletic functions.

**Major Initiatives.** The Casa Grande Union High School District continues to develop activities and programs to foster school improvement. The Administration redeveloped the educational plan for the District and formulated five succinct goals for the near and immediate future. These goals concentrate on educational and workforce development for our students which includes a viable curriculum to promote high student achievement in a safe and healthy learning environment while utilizing effective resources and providing communication between and among all of the District's stakeholders. It is our belief that these five goals are the guiding principles for the District's activities for the next several years.

One goal is competitive educational and workforce development. We believe this can be obtained by providing rigorous and relevant curriculum that engages all students, developing our capability to engage community support through business and industry partnerships and expand learning and career opportunities to support all students in their post-high school desires. The first step towards this goal was to initiate a workforce development committee comprised of educational and community leaders to determine what skills and abilities their employees need to have to work in their organizations.

Secondly, we would like to have a viable curriculum that promotes high student achievement. This is done by encouraging creative and critical thinking in solving relevant real-world situations. We feel this can be obtained by providing relevant, current, focused methodology and resources and developing personalized student learning. The District has recently added two new Career & Technical Education courses which include Graphic Web Design and Automation Robotics.

Thirdly, the District would like to promote a positive, safe and healthy learning environment by providing physical, mental and emotional supports that encourage mutual respect and acceptance as well as a positive school culture where students and staff value building genuine relationships. The District will also prioritize and ensure safe physical and structural environments.

Another goal is effective and efficient communications. This will be achieved by promoting a timely, accurate and open exchange of District information, positive publicity of the District resources and embracing community involvement by supporting District and community opportunities that benefit our students and local business and industry. The District has implemented new websites that are user friendly and contain current information and events. We also have a monthly District newsletter that is sent to all constituents.

The District's final goal is to promote an effective and efficient use of resources. By maintaining and sustaining an environment where all stakeholders are valued and welcomed, and by maximizing the efficiency of the District's financial and human resources, we can meet the diverse needs of all students and ensure on-time graduation. We are also expanding the use of relevant technology to enhance the educational process and student learning.

The annual expenditure budget serves as the foundation for the District's financial planning and control. The objective of these budgetary controls is to ensure compliance with legal provisions embodied in the annual expenditure budget approved by the District's Governing Board.

The expenditure budget is prepared by fund for all Governmental Funds, and includes function and object code detail for the General Fund and some Special Revenue and Capital Projects Funds. The legal level of budgetary control (that is, the level at which expenditures cannot exceed the appropriated amount) is established at the individual fund level for all funds. Funds that are not required to legally adopt a budget may have over expenditures of budgeted funds. The budget for these funds is simply an estimate and does not prevent the District from exceeding the budget as long as the necessary revenue is earned.

## FACTORS AFFECTING FINANCIAL CONDITION

The information presented in the financial statements is perhaps best understood when it is considered from the broader perspective of the specific environment within which the District operates.

**Local Economy.** The District is located in the western part of Pinal County, which is in the south-central portion of the State of Arizona. The District was organized in 1919 and presently encompasses 1,280 square miles. The current population for the District is estimated at 79,305.

The local economy continues to grow with companies like Lucid, Kohler and Nikola developing the greater economic region. Housing subdivisions, including single family and multi-family, have restarted building new homes and several new small businesses have opened. Home prices and population growth are both showing small positive increases. The economy of the District has an urban and a rural component. The urban portion, represented by the activity in and around the City of Casa Grande, is based upon manufacturing, government and commerce. The rural portion is based upon agriculture, mining and tourism.

The City of Casa Grande plays an important role in the District's economy. The City has an estimated 2020 population of 61,858, which constitutes about 78 percent of the District's entire population, while the City's net assessed value accounts for nearly 50 percent of the District's net assessed value.

Casa Grande is located at the intersection of I-8 and I-10 in an area known as Arizona's Sun Corridor. A convenient location midway between the major metropolitan markets of Phoenix and Tucson, the City of Casa Grande has grown to be the largest community in western Pinal County since its incorporation in 1915.

Its economic base is a mix of retail trade, manufacturing and agriculture, while its market area consists of more than 91,000 consumers.

Its prime location provides cost effective access to global markets. These factors have led to Casa Grande evolving into a diversified full-service area with manufacturing, distribution facilities, retail trade, and tourist-related employment.

The city maintains several mature and new industrial parks with excellent access to major rail lines, freeways and highways. Additionally, these industrial sites are located within a 45-minute drive of Phoenix Sky Harbor International Airport, which provides easy access to both the casual and the business traveler.

The people of Casa Grande put together a successful industrial park and in recent years, first class manufacturers have moved into the area. Among the companies located in Casa Grande are Abbott Nutrition; Daisy Brand; Metal Solutions; National Vitamin Company, Inc.; Quemetco Metals Limited, Inc.; Frito-Lay, Inc.; Hexcel Corporation; Ross Laboratories, and Walmart Distribution Center and is the North American Headquarters for ACO Polymer Products, Inc. Many of these are manufacturing companies with heavy distribution activity. One of the reasons they chose Casa Grande is that it offers the same, if not better, market accessibility than metro Phoenix or Tucson.

Casa Grande is the retail center for North Western and North Eastern sections of Pinal County serving more than 162,429 consumers, including local retailers, specialty stores, antiques stores, and outlet shopping. Local retailers include JCPenney, Walmart, Home Depot, Dillard's, Lowe's, Office Max, and numerous other specialty retailers along with several grocery stores. In 2021 we have also opened new restaurants in the area including Texas Roadhouse, The Hideout Steakhouse, Rosati's Pizza, and opening in early 2022 is The Angry Crab.

Additionally, during 2013 two dairy manufacturing companies opened new processing plants in Casa Grande. Franklin Foods, Inc., the world's fastest growing cream cheese company, operates a state-of-the-arts 90,000 square foot facility out of the former Arizona Dairy Ingredients building. Franklin Foods, Inc. produces a full line of cultured cream cheese and cream cheese based products including the newly announced and industry first Greek Cream Cheese. The facility is expected to create 80 new jobs over the next two years.

Franklin Foods was established in Enosburg Falls, Vermont in 1899 and has a rich tradition of supporting local New England Dairy Farmers by purchasing fresh milk and cream from nearby farms and suppliers. The company continues this tradition in Arizona by purchasing local milk and cream from United Dairyman of Arizona (UDA).

Ehrmann Arizona Dairy, LLC is the second dairy manufacturing company to open in Casa Grande in 2013. The company constructed a state-of-the-art yogurt manufacturing facility on a 25-acre site. The 89,999 square foot dairy processing facility for manufacturing yogurt was completed in September 2013. The plant's partners, Ehrmann and Commonwealth Dairy, have owned and operated a dairy operation in Brattleboro, Vermont since 2011.

The Casa Grande Valley agricultural industry has long been a major contributor to the area economy. The Census of Agriculture shows there are over 785 farms in Pinal County and accounts for almost 200,000 acres of farmland. The estimated market value of crop sales is around \$240 million dollars. Pinal County is consistently in the top rankings for field crop production in Arizona competing with Maricopa County. Some of the key crops for the area include cotton, alfalfa, and corn for silage, wheat, and barley.

In 2007, the 1,000,000 square foot Promenade, shopping center, was completed. The Promenade Shopping Center consists of a number of well-known national retail stores, restaurants, and a multiplex movie theater.

Casa Grande has become the "new" home Mecca for the Phoenix area. New home prices are running from \$25,000 to \$50,000 below the Phoenix market. For some time now the developers have been looking at Pinal County as a whole for a wide variety of communities from active adult to single family communities. The original projections for continued growth have slowed down considerably due to economic conditions in the housing market.

Outside the City of Casa Grande, the District's most significant economic component remains agriculture. While the City of Casa Grande is shedding its agrarian dependency, Pinal County's outlying economy has always been strongly dependent on agriculture. The District lies in the Santa Cruz and Santa Rose Basins, two of the State's most fertile agriculture areas. Over 100,000 acres in the valley are under irrigation, producing cotton (the area's principal crop), grains, alfalfa, vegetables and citrus fruits. Farming is supplemented by the presence of several large cattle ranching and feeding operations in the area.

Lucid Motors continues to expand its footprint in the Casa Grande region. Initial plans were delayed and a new timeline was established and ground breaking took place in 2019. After five years of planning, Lucid Motors finally began to roll out their electric cars in the latter part of 2021. The company expects to generate approximately 6,000 direct and indirect construction jobs as manufacturing square footage continues to be added to their current facility.

Attesa Motorsports submitted their final plans to Pinal County and planned to break ground in the spring of 2020. However, due to COVID-19 Phase I plans have been delayed for the track and placed on hold for spectator areas. Phase I plans include three tracks, a hotel, and a convention center. The complex will be built on 2,500 acres and expects to create 13,300 new jobs which will provide more opportunity for growth in the community as well as for the District. New housing has already begun to support the projected increase in population.

**Long-term Financial Planning.** The District has seen an affluent increase in new home construction in the Casa Grande area over the last year which has equated to new students. As construction continues to progress, we anticipate seeing an increase in student enrollment as well. The opening of Lucid Motors has also contributed to the growth of the area.

Through the use of alternative revenues, bond revenues and the participation in programs such as the Schools and Libraries Program of the Universal Service Fund (USAC/E-Rate), the District annually updates targeted areas of the technological infrastructure at the school sites. These upgrades to infrastructure and renovations to school sites and District office space are aligned with the District's goals to expand the use of relevant technology to enhance the educational process and student learning. The average age of school buildings is 23 years.

## **AWARDS AND ACKNOWLEDGMENTS**

**Awards.** The Association of School Business Officials International (ASBO) awarded a Certificate of Excellence in Financial Reporting to the District for its annual comprehensive financial report for the fiscal year ended June 30, 2021. This was the seventh year that the District received this prestigious award. In addition, the Government Finance Officers Association (GFOA) awarded a Certificate of Achievement for Excellence in Financial Reporting to the District for its annual comprehensive financial report for the fiscal year ended June 30, 2021. In order to be awarded these certificates, the District published an easily readable and efficiently organized annual comprehensive financial report. This report satisfied both accounting principles generally accepted in the United States of America and applicable legal requirements.

These certificates are valid for a period of one year only. We believe that our current annual comprehensive financial report continues to meet the programs' requirements and we are submitting it to ASBO and GFOA to determine its eligibility for the fiscal year ended June 30, 2022 certificates.

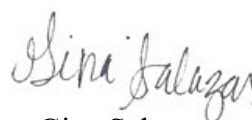
**Acknowledgments.** The preparation of the annual comprehensive financial report on a timely basis was made possible by the dedicated service of the entire staff of the business and finance department. Each member of the department has our sincere appreciation for the contributions made in the preparation of this report.

In closing, without the leadership and support of the Governing Board of the District, preparation of this report would not have been possible.

Respectfully submitted,



Jeff Lavender  
Interim Superintendent



Gina Salazar  
Business Services Director



ASSOCIATION OF  
SCHOOL BUSINESS OFFICIALS  
INTERNATIONAL

The Certificate of Excellence in Financial Reporting  
is presented to

## Casa Grande Union High School District 82

for its Annual Comprehensive Financial Report  
for the Fiscal Year Ended June 30, 2021.

The district report meets the criteria established for  
ASBO International's Certificate of Excellence in Financial Reporting.



A handwritten signature in black ink, appearing to read 'William A. Sutter'.

William A. Sutter  
President

A handwritten signature in black ink, appearing to read 'David J. Lewis'.

David J. Lewis  
Executive Director



Government Finance Officers Association

Certificate of  
Achievement  
for Excellence  
in Financial  
Reporting

Presented to

**Casa Grande Union High School District No. 82  
Arizona**

For its Annual Comprehensive  
Financial Report  
For the Fiscal Year Ended

June 30, 2021

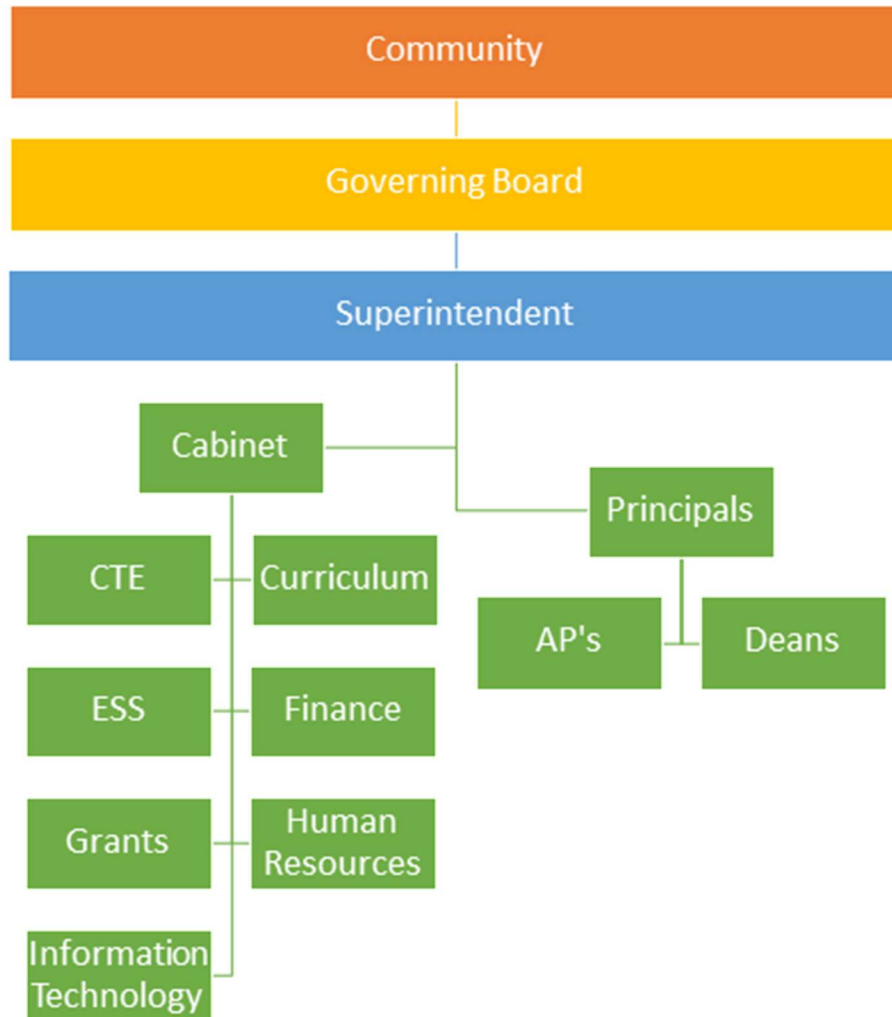
*Christopher P. Morill*

Executive Director/CEO

# Casa Grande Union High School District #82

## Organizational Chart

---



**CASA GRANDE UNION HIGH SCHOOL DISTRICT NO. 82**

**LIST OF PRINCIPAL OFFICIALS**

**GOVERNING BOARD**

Jack Henness, President

Kelly Herrington, Member

Taylor Kerby, Member

Joe Lopez, Member

Chuck Wright, Member

**ADMINISTRATIVE STAFF**

Jeff Lavender, Interim Superintendent

Dr. Matthew Strom, Assistant Superintendent of Business Operations

Gina Salazar, Director of Business Services

Brian Mabb, Principal

Vance Danzy, Principal

Crystal Danzy, Principal

## **FINANCIAL SECTION**

(This page intentionally left blank)

## Independent Auditor's Report

Governing Board  
Casa Grande Union High School District No. 82

### ***Opinions***

We have audited the accompanying financial statements of the governmental activities, each major fund, and the aggregate remaining fund information of Casa Grande Union High School District No. 82 (District), as of and for the year ended June 30, 2022, and the related notes to the financial statements, which collectively comprise the District's basic financial statements as listed in the table of contents.

In our opinion, the financial statements referred to above present fairly, in all material respects, the respective financial position of the governmental activities, each major fund, and the aggregate remaining fund information of the Casa Grande Union High School District No. 82, as of June 30, 2022, and the respective changes in financial position thereof for the year then ended in accordance with accounting principles generally accepted in the United States of America

### ***Basis for Opinions***

We conducted our audit in accordance with auditing standards generally accepted in the United States of America and the standards applicable to financial audits contained in *Government Auditing Standards*, issued by the Comptroller General of the United States. Our responsibilities under those standards are further described in the *Auditor's Responsibilities for the Audit of the Financial Statements* section of our report. We are required to be independent of Casa Grande Union High School District No. 82 and to meet our other ethical responsibilities in accordance with the relevant ethical requirements relating to our audit. We believe that the audit evidence we have obtained is sufficient and appropriate to provide a basis for our audit opinions.

### ***Change in Accounting Principle***

As described in Note 1, the District implemented the provisions of the Governmental Accounting Standards Board (GASB) Statement No. 87, *Leases*, for the year ended June 30, 2022, which represents a change in accounting principle. Our opinion is not modified with respect to this matter.

### ***Responsibilities of Management for the Financial Statements***

Management is responsible for the preparation and fair presentation of the financial statements in accordance with accounting principles generally accepted in the United States of America, and for the design, implementation, and maintenance of internal control relevant to the preparation and fair presentation of financial statements that are free from material misstatement, whether due to fraud or error.

In preparing the financial statements, management is required to evaluate whether there are conditions or events, considered in the aggregate, that raise substantial doubt about the District's ability to continue as a going concern for one year beyond the financial statement date, including any currently known information that may raise substantial doubt shortly thereafter

### ***Auditor's Responsibilities for the Audit of the Financial Statements***

Our objectives are to obtain reasonable assurance about whether the financial statements as a whole are free from material misstatement, whether due to fraud or error, and to issue an auditor's report that includes our opinions. Reasonable assurance is a high level of assurance but is not absolute assurance and therefore is not a guarantee that an audit conducted in accordance with generally accepted auditing standards and *Government Auditing Standards* will always detect a material misstatement when it exists. The risk of not detecting a material misstatement resulting from fraud is higher than for one resulting from error, as fraud may involve collusion, forgery, intentional omissions, misrepresentations, or the override of internal control. Misstatements are considered material if there is a substantial likelihood that, individually or in the aggregate, they would influence the judgment made by a reasonable user based on the financial statements. In performing an audit in accordance with generally accepted auditing standards and *Government Auditing Standards*, we:

- Exercise professional judgment and maintain professional skepticism throughout the audit.
- Identify and assess the risks of material misstatement of the financial statements, whether due to fraud or error, and design and perform audit procedures responsive to those risks. Such procedures include examining, on a test basis, evidence regarding the amounts and disclosures in the financial statements.
- Obtain an understanding of internal control relevant to the audit in order to design audit procedures that are appropriate in the circumstances, but not for the purpose of expressing an opinion on the effectiveness of the District's internal control. Accordingly, no such opinion is expressed.
- Evaluate the appropriateness of accounting policies used and the reasonableness of significant accounting estimates made by management, as well as evaluate the overall presentation of the financial statements.
- Conclude whether, in our judgment, there are conditions or events, considered in the aggregate, that raise substantial doubt about the District's ability to continue as a going concern for a reasonable period of time.

We are required to communicate with those charged with governance regarding, among other matters, the planned scope and timing of the audit, significant audit findings, and certain internal control related matters that we identified during the audit.

### ***Other Matters***

#### ***Required Supplementary Information***

Accounting principles generally accepted in the United States of America require that the Management's Discussion and Analysis, budgetary comparison information, and net pension liability information, as listed in the table of contents, be presented to supplement the basic financial statements. Such information is the responsibility of management and, although not a part of the basic financial statements, is required by the Governmental Accounting Standards Board, who considers it to be an essential part of financial reporting for placing the basic financial statements in an appropriate operational, economic, or historical context. We have applied certain limited procedures to the required supplementary information in accordance with auditing standards generally accepted in the United States of America, which consisted of inquiries of management about the methods of preparing the information and comparing the information for consistency with management's responses to our inquiries, the basic financial statements, and other knowledge we obtained during our audit of the basic financial statements. We do not express an opinion or provide any assurance on the information because the limited procedures do not provide us with sufficient evidence to express an opinion or provide any assurance.

### *Supplementary Information*

Our audit was conducted for the purpose of forming opinions on the financial statements that collectively comprise the District's basic financial statements. The Combining and Individual Fund Financial Statements and Schedules are presented for purposes of additional analysis and are not a required part of the basic financial statements. Such information is the responsibility of management and was derived from and relates directly to the underlying accounting and other records used to prepare the basic financial statements. Such information has been subjected to the auditing procedures applied in the audit of the basic financial statements and certain additional procedures, including comparing and reconciling such information directly to the underlying accounting and other records used to prepare the basic financial statements or to the basic financial statements themselves, and other additional procedures in accordance with auditing standards generally accepted in the United States of America. In our opinion, the Combining and Individual Fund Financial Statements and Schedules information is fairly stated in all material respects in relation to the basic financial statements as a whole.

### *Other Information*

Management is responsible for the other information included in the annual report. The other information comprises the Introductory Section and Statistical Section but does not include the basic financial statements and our auditor's report thereon. Our opinions on the basic financial statements do not cover the other information and we do not express an opinion or any form of assurance thereon.

In connection with our audit of the basic financial statements, our responsibility is to read the other information and consider whether a material inconsistency exists between the other information and the basic financial statements, or the other information otherwise appears to be materially misstated. If, based on other work performed, we conclude that an uncorrected material misstatement of the other information exists, we are required to describe it in our report.

### **Other Reporting Required by Government Auditing Standards**

In accordance with *Government Auditing Standards*, we have also issued our report dated March 30, 2023, on our consideration of Casa Grande Union High School District No. 82's internal control over financial reporting and on our tests of its compliance with certain provisions of laws, regulations, contracts, and grant agreements and other matters. The purpose of that report is solely to describe the scope of our testing of internal control over financial reporting and compliance and the results of that testing, and not to provide an opinion on the effectiveness of the Casa Grande Union High School District No. 82's internal control over financial reporting or on compliance. That report is an integral part of an audit performed in accordance with *Government Auditing Standards* in considering Casa Grande Union High School District No. 82's internal control over financial reporting and compliance.

*Heinfeld Meech & Co. PC*

Heinfeld, Meech & Co., P.C.  
Tucson, Arizona  
March 30, 2023

(This page intentionally left blank)

**MANAGEMENT'S DISCUSSION AND ANALYSIS (MD&A)**  
**(Required Supplementary Information)**

(This page intentionally left blank)

**CASA GRANDE UNION HIGH SCHOOL DISTRICT NO. 82  
MANAGEMENT’S DISCUSSION AND ANALYSIS (MD&A)  
YEAR ENDED JUNE 30, 2022**

As management of the Casa Grande Union High School District No. 82 (District), we offer readers of the District’s financial statements this narrative overview and analysis of the financial activities of the District for the fiscal year ended June 30, 2022. The management’s discussion and analysis is presented as required supplementary information to supplement the basic financial statements. We encourage readers to consider the information presented here in conjunction with additional information that we have furnished in our letter of transmittal, which can be found in the introductory section of this report.

**FINANCIAL HIGHLIGHTS**

- The District’s total net position of governmental activities increased \$7.6 million which represents a 14 percent increase from the prior fiscal year primarily due to an increase in unrestricted state aid and COVID-19 federal grants.
- General revenues accounted for \$42.2 million in revenue, or 80 percent of all current fiscal year revenues. Program specific revenue in the form of charges for services and grants and contributions accounted for \$10.4 million or 20 percent of total current fiscal year revenues.
- The District had approximately \$45.1 million in expenses related to governmental activities, an increase of eight percent from the prior fiscal year.
- Among major funds, the General Fund had \$32.5 million current fiscal year revenues, which primarily consisted of state aid and property taxes, and \$30.3 million in expenditures. The General Fund’s fund balance increase from \$9.2 million at the prior fiscal year end to \$11.9 million at the end of the current fiscal year was primarily due to an increase in property taxes associated with increased property values.
- The Other Federal Projects Fund’s fund balance increased from \$23,321 at the prior fiscal year end to a balance of \$34,939 at the current fiscal year end.
- The Food Service Fund’s fund balance increased from \$2.1 million at the prior fiscal year end to a balance of \$3.0 million at the current fiscal year end primarily due to increased federal funding.
- The Unrestricted Capital Outlay Fund had \$3.7 million in current fiscal year revenues, which primarily consisted of state aid and property taxes, and \$2.1 million in expenditures. The Unrestricted Capital Outlay’s fund balance increased from \$4.1 million at the prior fiscal year end to \$5.7 million at the end of the current year primarily due to increased property taxes associated with increased property values and an increase in state funding.

**OVERVIEW OF FINANCIAL STATEMENTS**

This discussion and analysis are intended to serve as an introduction to the District’s basic financial statements. The District’s basic financial statements comprise three components: 1) government-wide financial statements, 2) fund financial statements, and 3) notes to the financial statements. This report also contains other supplementary information in addition to the basic financial statements themselves.

**CASA GRANDE UNION HIGH SCHOOL DISTRICT NO. 82  
MANAGEMENT'S DISCUSSION AND ANALYSIS (MD&A)  
YEAR ENDED JUNE 30, 2022**

**OVERVIEW OF FINANCIAL STATEMENTS**

**Government-wide financial statements.** The government-wide financial statements are designed to provide readers with a broad overview of the District's finances, in a manner similar to a private-sector business. The accrual basis of accounting is used for the government-wide financial statements.

The statement of net position presents information on all of the District's assets, liabilities, and deferred inflows/outflows of resources with the difference reported as net position. Over time, increases or decreases in net position may serve as a useful indicator of whether the financial position of the District is improving or deteriorating.

The statement of activities presents information showing how the District's net position changed during the most recent fiscal year. All changes in net position are reported as soon as the underlying event giving rise to the change occurs, regardless of the timing of related cash flows. Thus, revenues and expenses are reported in this statement for some items that will only result in cash flows in future fiscal periods (e.g., uncollected taxes and earned but unused compensated absences).

The government-wide financial statements outline functions of the District that are principally supported by property taxes and intergovernmental revenues. The governmental activities of the District include instruction, support services, operation and maintenance of plant services, student transportation services, operation of non-instructional services, and interest on long-term debt.

**Fund financial statements.** A fund is a grouping of related accounts that is used to maintain control over resources that have been segregated for specific activities or objectives. The District uses fund accounting to ensure and demonstrate compliance with finance-related legal requirements. All of the funds of the District are reported as governmental funds.

**Governmental funds.** Governmental funds are used to account for essentially the same functions reported as governmental activities in the government-wide financial statements. However, unlike the government-wide financial statements, governmental fund financial statements use the modified accrual basis of accounting and focus on near-term inflows of spendable resources, as well as on balances of spendable resources available at the end of the fiscal year. Such information may be useful in evaluating the District's near-term financing requirements.

Because the focus of governmental funds is narrower than that of the government-wide financial statements, it is useful to compare the information presented for governmental funds with similar information presented for governmental activities in the government-wide financial statements. By doing so, readers may better understand the long-term impact of the District's near-term financing decisions. Both the governmental fund balance sheet and the governmental fund statement of revenues, expenditures and changes in fund balances provide a reconciliation to facilitate this comparison between governmental funds and governmental activities.

**CASA GRANDE UNION HIGH SCHOOL DISTRICT NO. 82  
MANAGEMENT’S DISCUSSION AND ANALYSIS (MD&A)  
YEAR ENDED JUNE 30, 2022**

**OVERVIEW OF FINANCIAL STATEMENTS**

Information is presented separately in the governmental fund balance sheet and in the governmental fund statement of revenues, expenditures and changes in fund balances for the General, Other Federal Projects, Food Service, and Unrestricted Capital Outlay Funds, all of which are considered to be major funds. Data from the other governmental funds are combined into a single, aggregated presentation. Individual fund data for each of these non-major governmental funds is provided in the form of combining statements and schedules.

**Notes to the financial statements.** The notes provide additional information that is essential to a full understanding of the data provided in the government-wide and fund financial statements. The notes to the financial statements can be found immediately following the basic financial statements.

**Other information.** In addition to the basic financial statements and accompanying notes, this report also presents certain required supplementary information concerning the District’s budget process and pension plan. The District adopts an annual expenditure budget for all governmental funds. A schedule of revenues, expenditures and changes in fund balances – budget and actual has been provided for the General Fund and major Special Revenue Funds as required supplementary information. Schedules for the pension plan have been provided as required supplementary information.

**GOVERNMENT-WIDE FINANCIAL ANALYSIS**

Net position may serve over time as a useful indicator of a government’s financial position. In the case of the District, assets and deferred outflows exceeded liabilities and deferred inflows by \$61.0 million at the current fiscal year end.

The largest portion of the District’s net position reflects its investment in capital assets (e.g., land and improvements, buildings and improvements, vehicles, furniture and equipment and construction in progress), less any related outstanding debt used to acquire those assets. The District uses these capital assets to provide services to its students; consequently, these assets are not available for future spending. Although the District’s investment in its capital assets is reported net of related outstanding debt, it should be noted that the resources needed to repay this debt must be provided from other sources, since the capital assets themselves cannot be used to liquidate these liabilities.

**CASA GRANDE UNION HIGH SCHOOL DISTRICT NO. 82  
MANAGEMENT'S DISCUSSION AND ANALYSIS (MD&A)  
YEAR ENDED JUNE 30, 2022**

**GOVERNMENT-WIDE FINANCIAL ANALYSIS**

In addition, a portion of the District's net position represents resources that are subject to external restrictions on how they may be used. The remaining balance is unrestricted and may be used to meet the District's ongoing obligations to its citizens and creditors.

The following table presents a summary of the District's net position for the fiscal years ended June 30, 2022 and June 30, 2021.

	As of June 30, 2022	As of June 30, 2021
Current and other assets	\$ 26,043,200	\$ 19,812,715
Capital assets, net	70,025,475	71,080,050
Total assets	<u>96,068,675</u>	<u>90,892,765</u>
 Deferred outflows	 <u>5,562,542</u>	 <u>6,273,875</u>
 Current and other liabilities	 979,276	 1,470,905
Long-term liabilities	<u>32,323,462</u>	<u>42,249,026</u>
Total liabilities	<u>33,302,738</u>	<u>43,719,931</u>
 Deferred inflows	 <u>7,370,289</u>	 <u>48,821</u>
 Net position:		
Net investment in capital assets	59,615,791	58,325,521
Restricted	12,270,163	8,849,845
Unrestricted	<u>(10,927,764)</u>	<u>(13,777,478)</u>
Total net position	<u>\$ 60,958,190</u>	<u>\$ 53,397,888</u>

The District's financial position is the product of several financial transactions including the net result of activities, the payment of debt, the acquisition and disposal of capital assets, and the depreciation of capital assets. The following are significant current year transactions that had an impact on the Statement of Net Position.

- The principal retirement and premium amortization of \$2.6 million of bonds.
- The decrease of \$7.0 million in pension liabilities.
- Capital asset depreciation of \$2.5 million.

**CASA GRANDE UNION HIGH SCHOOL DISTRICT NO. 82  
MANAGEMENT'S DISCUSSION AND ANALYSIS (MD&A)  
YEAR ENDED JUNE 30, 2022**

**GOVERNMENT-WIDE FINANCIAL ANALYSIS**

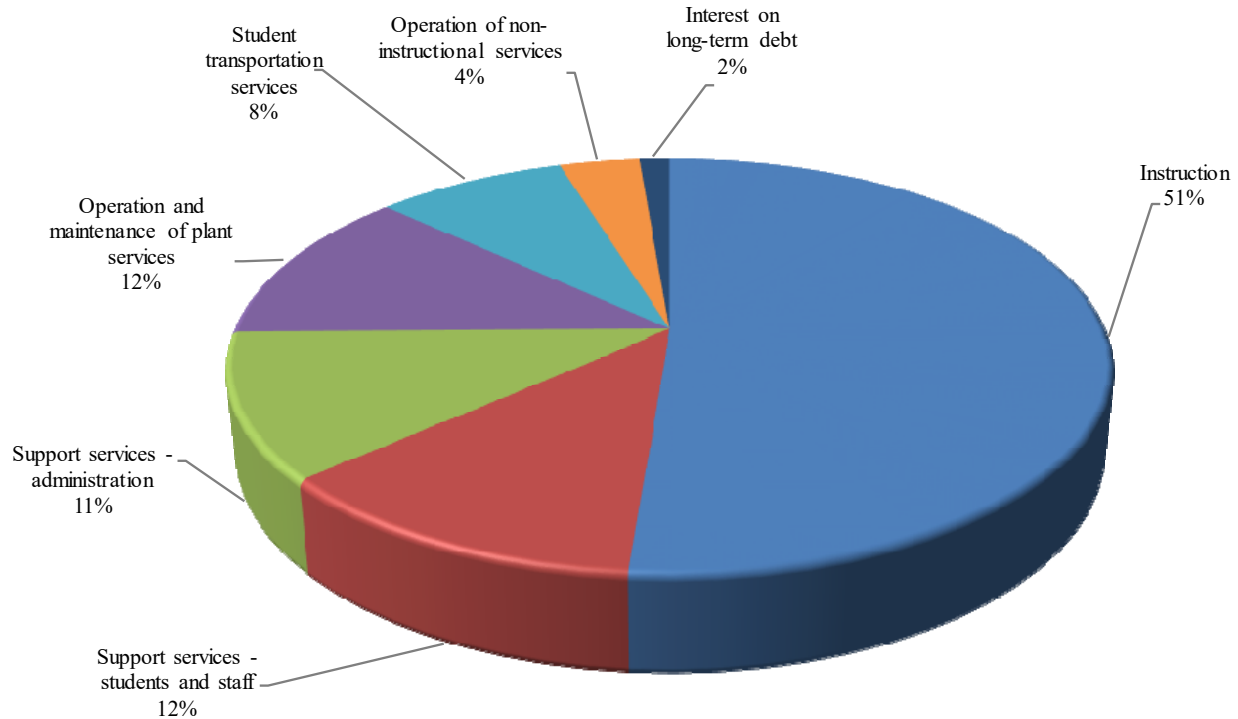
**Changes in net position.** The District's total revenues for the current fiscal year were \$52.6 million. The total cost of all programs and services was \$45.1 million. The following table presents a summary of the changes in net position for the fiscal years ended June 30, 2022 and June 30, 2021.

	Fiscal Year Ended June 30, 2022	Fiscal Year Ended June 30, 2021
<b>Revenues:</b>		
Program revenues:		
Charges for services	\$ 2,488,749	\$ 1,669,351
Operating grants and contributions	6,545,760	5,317,517
Capital grants and contributions	1,349,958	428,390
General revenues:		
Property taxes	18,884,712	17,139,989
Investment income	73,444	64,539
Unrestricted county aid	1,157,151	907,666
Unrestricted state aid	21,604,939	18,845,721
Unrestricted federal aid	527,035	391,944
<b>Total revenues</b>	52,631,748	44,765,117
<b>Expenses:</b>		
Instruction	23,104,224	21,032,818
Support services - students and staff	5,501,758	6,026,944
Support services - administration	5,087,432	3,957,606
Operation and maintenance of plant services	5,474,266	5,667,082
Student transportation services	3,743,110	2,820,423
Operation of non-instructional services	1,572,495	1,485,544
Interest on long-term debt	588,161	661,752
<b>Total expenses</b>	45,071,446	41,652,169
<b>Changes in net position</b>	7,560,302	3,112,948
<b>Net position, beginning, as restated</b>	53,397,888	50,284,940
<b>Net position, ending</b>	\$ 60,958,190	\$ 53,397,888

**CASA GRANDE UNION HIGH SCHOOL DISTRICT NO. 82  
MANAGEMENT’S DISCUSSION AND ANALYSIS (MD&A)  
YEAR ENDED JUNE 30, 2022**

**GOVERNMENT-WIDE FINANCIAL ANALYSIS**

**Expenses - Fiscal Year 2022**



The following are significant current year transactions that have had an impact on the change in net position.

- The increase of \$1.2 million in operating grants and contributions and \$921,568 in capital grants and contributions was primarily due to federal funding related to COVID-19 grants.
- The increase of \$2.8 million in unrestricted state aid due to an increase in state equalization.
- Student transportation services increased \$922,687 as a result of increased transportation costs as in-person instruction and extracurricular activities returned post COVID-19.
- Instruction expenses increased \$2.1 million and support services – administration increased \$1.1 million due to additional federal funding related to COVID-19 grants.

**CASA GRANDE UNION HIGH SCHOOL DISTRICT NO. 82  
MANAGEMENT’S DISCUSSION AND ANALYSIS (MD&A)  
YEAR ENDED JUNE 30, 2022**

**GOVERNMENT-WIDE FINANCIAL ANALYSIS**

The following table presents the cost of the District’s major functional activities. The table also shows each function’s net cost (total cost less charges for services generated by the activities and intergovernmental aid provided for specific programs). The net cost shows the financial burden that was placed on the State and District’s taxpayers by each of these functions.

	<u>Year Ended June 30, 2022</u>		<u>Year Ended June 30, 2021</u>	
	Total	Net (Expense)/	Total	Net (Expense)/
	<u>Expenses</u>	<u>Revenue</u>	<u>Expenses</u>	<u>Revenue</u>
Instruction	\$ 23,104,224	\$ (19,047,093)	\$ 21,032,818	\$ (17,152,357)
Support services - students and staff	5,501,758	(3,684,467)	6,026,944	(5,052,291)
Support services - administration	5,087,432	(4,290,573)	3,957,606	(3,648,475)
Operation and maintenance of plant services	5,474,266	(4,387,239)	5,667,082	(5,234,700)
Student transportation services	3,743,110	(3,653,988)	2,820,423	(2,777,318)
Operation of non-instructional services	1,572,495	964,542	1,485,544	289,982
Interest on long-term debt	588,161	(588,161)	661,752	(661,752)
Total	<u>\$ 45,071,446</u>	<u>\$ (34,686,979)</u>	<u>\$ 41,652,169</u>	<u>\$ (34,236,911)</u>

- The cost of all governmental activities this year was \$45.1 million.
- Federal and State governments and charges for services subsidized certain programs with grants and contributions and other local revenues of \$10.4 million.
- Net cost of governmental activities of \$34.7 million was financed by general revenues, which are made up of primarily property taxes of \$18.9 million and state and county aid of \$22.8 million.

**FINANCIAL ANALYSIS OF THE DISTRICT’S FUNDS**

As noted earlier, the District uses fund accounting to ensure and demonstrate compliance with finance-related legal requirements.

**Governmental funds.** The focus of the District’s governmental funds is to provide information on near-term inflows, outflows, and balances of spendable resources. Such information is useful in assessing the District’s financing requirements. In particular, unassigned fund balance may serve as a useful measure of the District’s net resources available for spending at the end of the fiscal year.

**CASA GRANDE UNION HIGH SCHOOL DISTRICT NO. 82  
MANAGEMENT'S DISCUSSION AND ANALYSIS (MD&A)  
YEAR ENDED JUNE 30, 2022**

**FINANCIAL ANALYSIS OF THE DISTRICT'S FUNDS**

The financial performance of the District as a whole is reflected in its governmental funds. As the District completed the year, its governmental funds reported a combined fund balance of \$23.5 million, an increase of \$5.8 million primarily due to an increase in state aid revenues.

The General Fund is the principal operating fund of the District. The increase in fund balance of \$2.7 million to \$11.9 as of fiscal year end was primarily a result of property taxes associated with increased property values. General Fund revenues increased \$2.2 million. General Fund expenditures increased \$2.9 million as a result of increased costs related to instruction, administration, and student transportation post COVID-19 pandemic.

The Other Federal Projects Fund's fund balance increased \$11,618 to \$34,939.

The Food Service Fund's fund balance increased \$915,753 to \$3.0 million due to additional Summer Food Service Program and other COVID-19 pandemic related funding.

Unrestricted Capital Outlay Fund revenues increased \$1.1 million primarily due to increased property taxes associated with increased property tax values and an increase in state funding. Unrestricted Capital Outlay Fund expenditures increased \$50,982.

**BUDGETARY HIGHLIGHTS**

Over the course of the year, the District revised the General Fund annual expenditure budget for an increase in average daily membership. The difference between the original budget and the final amended budget was a \$4.9 million increase, or 15 percent.

Significant variances for the final amended budget and actual revenues resulted from the District not being required by the State of Arizona to prepare a revenue budget. A schedule showing the original and final budget amounts compared to the District's actual financial activity for the General Fund is provided in this report as required supplementary information. The significant favorable variance of \$5.7 million in instruction was a result of budgeting to the maximum general budget limit to maximize the budget balance carryforward.

**CASA GRANDE UNION HIGH SCHOOL DISTRICT NO. 82  
MANAGEMENT'S DISCUSSION AND ANALYSIS (MD&A)  
YEAR ENDED JUNE 30, 2022**

**CAPITAL ASSETS AND DEBT ADMINISTRATION**

**Capital Assets.** At year end, the District had invested \$113.2 million in capital assets, including school buildings, athletic facilities, buses and other vehicles, computers, and other equipment. This amount represents a net increase prior to depreciation of \$1.5 million from the prior fiscal year. Total depreciation expense for the current fiscal year was \$2.5 million. The following schedule presents a summary of capital asset balances for the fiscal years ended June 30, 2022 and June 30, 2021.

	As of June 30, 2022	As of June 30, 2021
Capital assets - non-depreciable	\$ 232,281	\$ 183,498
Capital assets - depreciable, net	69,793,194	70,896,552
Total	\$ 70,025,475	\$ 71,080,050

Additional information on the District's capital assets can be found in Note 7.

**Debt Administration.** At year end, the District had \$11.5 million in long-term debt outstanding, \$2.6 million due within one year. Long-term debt decreased by \$2.8 million due to scheduled payments.

The District's general obligation bonds are subject to two limits; the Constitutional debt limit (total debt limit) on all general obligation bonds (up to 15 percent of the total net full cash assessed valuation) and the statutory debt limit on Class B bonds (the greater of 10 percent of the net full cash assessed valuation or \$1,500 per student). The current total debt limitation for the District is \$113.8 million and the Class B debt limit is \$75.9 million, which are more than the District's total outstanding general obligation and Class B debt, respectively. Additional information on the District's long-term debt can be found in Notes 8 through 10.

**ECONOMIC FACTORS AND NEXT YEAR'S BUDGET AND RATES**

Many factors were considered by the District's administration during the process of developing the fiscal year 2022-23 budget. Among them:

- Fiscal year 2021-22 budget balance carry forward (estimated \$7.3 million).
- District student population (estimated 3,908).

Also considered in the development of the budget is the local economy and inflation of the surrounding area.

**CASA GRANDE UNION HIGH SCHOOL DISTRICT NO. 82  
MANAGEMENT'S DISCUSSION AND ANALYSIS (MD&A)  
YEAR ENDED JUNE 30, 2022**

**ECONOMIC FACTORS AND NEXT YEAR'S BUDGET AND RATES**

Budgeted expenditures in the General Fund increased 10 percent to \$41.7 million in fiscal year 2022-23. The primary reason for the increase is due to an expected increase in the District's average daily membership (ADM). State aid and property taxes are expected to be the primary funding sources. No new programs were added to the 2022-23 budget.

The District's operating budget was not directly impacted by COVID-19 as the District has operated as a one-to-one district for the past five years and all expenses for student and staff devices are budgeted. All other expenses related to COVID-19 were covered under two grants the District was awarded; the Enrollment Stabilization Grant issued by the Governor's Office and the Federal Elementary and Secondary School Emergency Relief Grant.

**CONTACTING THE DISTRICT'S FINANCIAL MANAGEMENT**

This financial report is designed to provide our citizens, taxpayers, and investors and creditors with a general overview of the District's finances and to demonstrate the District's accountability for the resources it receives. If you have questions about this report or need additional information, contact the Business and Finance Department, Casa Grande Union High School District No. 82, 1362 North Casa Grande Avenue, Casa Grande, Arizona 85122.

## **BASIC FINANCIAL STATEMENTS**

(This page intentionally left blank)

**GOVERNMENT-WIDE FINANCIAL STATEMENTS**

**CASA GRANDE UNION HIGH SCHOOL DISTRICT NO. 82**  
**STATEMENT OF NET POSITION**  
**JUNE 30, 2022**

	Governmental Activities
<b><u>ASSETS</u></b>	
Current assets:	
Cash and investments	\$ 18,032,524
Property taxes receivable	548,148
Accounts receivable	15,138
Due from governmental entities	6,818,047
Leases receivable	629,343
Total current assets	26,043,200
Noncurrent assets:	
Capital assets not being depreciated	232,281
Capital assets, net of accumulated depreciation	69,793,194
Total noncurrent assets	70,025,475
<b>Total assets</b>	<b>96,068,675</b>
<b><u>DEFERRED OUTFLOWS OF RESOURCES</u></b>	
Deferred charges on refunding	450,347
Pension plan items	5,112,195
<b>Total deferred outflows of resources</b>	<b>5,562,542</b>
<b><u>LIABILITIES</u></b>	
Current liabilities:	
Accounts payable	666,044
Accrued payroll and employee benefits	274,672
Compensated absences payable	244,942
Unearned revenues	38,560
Financed purchases payable	200,282
Bonds payable	2,410,000
Total current liabilities	3,834,500
Noncurrent liabilities:	
Non-current portion of long-term obligations	29,468,238
Total noncurrent liabilities	29,468,238
<b>Total liabilities</b>	<b>33,302,738</b>
<b><u>DEFERRED INFLOWS OF RESOURCES</u></b>	
Pension plan items	6,745,413
Leases	624,876
<b>Total deferred inflows of resources</b>	<b>7,370,289</b>
<b><u>NET POSITION</u></b>	
Net investment in capital assets	59,615,791
Restricted for:	
Instruction	2,133,108
Food service	2,984,518
Non-instructional purposes	183,794
Debt service	1,231,727
Capital outlay	5,737,016
Unrestricted	(10,927,764)
<b>Total net position</b>	<b>\$ 60,958,190</b>

The notes to the basic financial statements are an integral part of this statement.

**CASA GRANDE UNION HIGH SCHOOL DISTRICT NO. 82**  
**STATEMENT OF ACTIVITIES**  
**YEAR ENDED JUNE 30, 2022**

<b>Functions/Programs</b>	Program Revenues				Net (Expense) Revenue and Changes in Net Position
	Expenses	Charges for Services	Operating Grants and Contributions	Capital Grants and Contributions	Governmental Activities
<b>Governmental activities:</b>					
Instruction	\$ 23,104,224	\$ 1,633,149	\$ 1,916,230	\$ 507,752	\$ (19,047,093)
Support services - students and staff	5,501,758	96,374	1,488,912	232,005	(3,684,467)
Support services - administration	5,087,432	107,712	689,147		(4,290,573)
Operation and maintenance of plant services	5,474,266	80,738	396,088	610,201	(4,387,239)
Student transportation services	3,743,110	34,014	55,108		(3,653,988)
Operation of non-instructional services	1,572,495	536,762	2,000,275		964,542
Interest on long-term debt	588,161				(588,161)
<b>Total governmental activities</b>	<u>\$ 45,071,446</u>	<u>\$ 2,488,749</u>	<u>\$ 6,545,760</u>	<u>\$ 1,349,958</u>	<u>(34,686,979)</u>

**General revenues:**

Taxes:

Property taxes, levied for general purposes	14,306,410
Property taxes, levied for debt service	3,037,118
Property taxes, levied for capital outlay	1,541,184
Investment income	73,444
Unrestricted county aid	1,157,151
Unrestricted state aid	21,604,939
Unrestricted federal aid	527,035

**Total general revenues** 42,247,281

**Changes in net position** 7,560,302

**Net position, beginning of year** 53,397,888

**Net position, end of year** \$ 60,958,190

The notes to the basic financial statements are an integral part of this statement.

(This page intentionally left blank)

**FUND FINANCIAL STATEMENTS**

**CASA GRANDE UNION HIGH SCHOOL DISTRICT NO. 82**  
**BALANCE SHEET - GOVERNMENTAL FUNDS**  
**JUNE 30, 2022**

	General	Other Federal Projects	Food Service
<b><u>ASSETS</u></b>			
Cash and investments	\$ 6,570,538	\$	\$ 2,905,669
Property taxes receivable	428,916		
Accounts receivable	11,250		
Due from governmental entities	3,842,431	1,370,485	78,849
Due from other funds	1,898,519		
Leases receivable	629,343		
<b>Total assets</b>	<b>\$ 13,380,997</b>	<b>\$ 1,370,485</b>	<b>\$ 2,984,518</b>
 <b><u>LIABILITIES, DEFERRED INFLOWS OF RESOURCES AND FUND BALANCES</u></b>			
Liabilities:			
Accounts payable	\$ 384,101	\$ 40,673	\$
Due to other funds		1,067,676	
Accrued payroll and employee benefits	198,975	57,699	
Unearned revenues			
<b>Total liabilities</b>	<b>583,076</b>	<b>1,166,048</b>	
Deferred inflows of resources:			
Unavailable revenues - property taxes	292,097		
Unavailable revenues - intergovernmental		169,498	
Leases	624,876		
<b>Total deferred inflows of resources</b>	<b>916,973</b>	<b>169,498</b>	
Fund balances (deficits):			
Restricted		34,939	2,984,518
Unassigned	11,880,948		
<b>Total fund balances</b>	<b>11,880,948</b>	<b>34,939</b>	<b>2,984,518</b>
 <b>Total liabilities, deferred inflows of resources and fund balances</b>	 <b>\$ 13,380,997</b>	 <b>\$ 1,370,485</b>	 <b>\$ 2,984,518</b>

The notes to the basic financial statements are an integral part of this statement.

<u>Unrestricted Capital Outlay</u>	<u>Non-Major Governmental Funds</u>	<u>Total Governmental Funds</u>
\$ 5,339,942	\$ 3,216,375	\$ 18,032,524
38,304	80,928	548,148
	3,888	15,138
495,848	1,030,434	6,818,047
		1,898,519
		629,343
<u>\$ 5,874,094</u>	<u>\$ 4,331,625</u>	<u>\$ 27,941,719</u>
\$ 151,483	\$ 89,787	\$ 666,044
	830,843	1,898,519
	17,998	274,672
	38,560	38,560
<u>151,483</u>	<u>977,188</u>	<u>2,877,795</u>
24,495	51,482	368,074
	374,586	544,084
		624,876
<u>24,495</u>	<u>426,068</u>	<u>1,537,034</u>
5,698,116	3,282,464	12,000,037
	(354,095)	11,526,853
<u>5,698,116</u>	<u>2,928,369</u>	<u>23,526,890</u>
<u>\$ 5,874,094</u>	<u>\$ 4,331,625</u>	<u>\$ 27,941,719</u>

(This page intentionally left blank)

**CASA GRANDE UNION HIGH SCHOOL DISTRICT NO. 82  
RECONCILIATION OF THE BALANCE SHEET - GOVERNMENTAL FUNDS  
TO THE STATEMENT OF NET POSITION  
JUNE 30, 2022**

<b>Total governmental fund balances</b>		<b>\$ 23,526,890</b>
<p>Amounts reported for <i>governmental activities</i> in the Statement of Net Position are different because:</p>		
<p>Capital assets used in governmental activities are not financial resources and, therefore, are not reported in the funds.</p>		
Governmental capital assets	\$ 113,221,311	
Less accumulated depreciation	<u>(43,195,836)</u>	70,025,475
<p>Some receivables are not available to pay for current period expenditures and, therefore, are reported as unavailable revenues in the funds.</p>		
Property taxes	368,074	
Intergovernmental	<u>544,084</u>	912,158
<p>Deferred items related to the refunding of bonds are amortized over the life of the associated bond issue in the government-wide statements but not reported in the funds.</p>		
		450,347
<p>Deferred outflows and inflows of resources related to pensions are applicable to future periods and, therefore, are not reported in the funds.</p>		
Deferred outflows of resources related to pensions	5,112,195	
Deferred inflows of resources related to pensions	<u>(6,745,413)</u>	(1,633,218)
<p>Long-term liabilities are not due and payable in the current period and, therefore, are not reported in the funds.</p>		
Compensated absences payable	(798,823)	
Financed purchases payable	(616,273)	
Net pension liability	(20,048,335)	
Bonds payable	<u>(10,860,031)</u>	<u>(32,323,462)</u>
<b>Net position of governmental activities</b>		<b><u><u>\$ 60,958,190</u></u></b>

The notes to the basic financial statements are an integral part of this statement.

**CASA GRANDE UNION HIGH SCHOOL DISTRICT NO. 82**  
**STATEMENT OF REVENUES, EXPENDITURES AND CHANGES IN FUND BALANCES -**  
**GOVERNMENTAL FUNDS**  
**YEAR ENDED JUNE 30, 2022**

	<u>General</u>	<u>Other Federal Projects</u>	<u>Food Service</u>
<b>Revenues:</b>			
Other local	\$ 1,901,005	\$	\$ 546,942
Property taxes	14,307,650		
State aid and grants	15,813,206		
Federal aid, grants and reimbursements	527,035	3,052,514	2,000,275
<b>Total revenues</b>	<u>32,548,896</u>	<u>3,052,514</u>	<u>2,547,217</u>
<b>Expenditures:</b>			
Current -			
Instruction	14,323,060	766,916	
Support services - students and staff	3,786,372	485,924	
Support services - administration	3,932,091	345,639	
Operation and maintenance of plant services	4,757,981	161,392	
Student transportation services	3,231,075	9,538	
Operation of non-instructional services	305,619		1,287,068
Capital outlay	11,450	1,194,695	48,230
Debt service -			
Principal retirement			
Interest and fiscal charges			
<b>Total expenditures</b>	<u>30,347,648</u>	<u>2,964,104</u>	<u>1,335,298</u>
<b>Excess (deficiency) of revenues over expenditures</b>	<u>2,201,248</u>	<u>88,410</u>	<u>1,211,919</u>
<b>Other financing sources (uses):</b>			
Transfers in	480,755		
Transfers out		(76,792)	(296,166)
<b>Total other financing sources (uses)</b>	<u>480,755</u>	<u>(76,792)</u>	<u>(296,166)</u>
<b>Changes in fund balances</b>	<u>2,682,003</u>	<u>11,618</u>	<u>915,753</u>
<b>Fund balances, beginning of year</b>	9,198,945	23,321	2,068,765
<b>Fund balances, end of year</b>	<u>\$ 11,880,948</u>	<u>\$ 34,939</u>	<u>\$ 2,984,518</u>

The notes to the basic financial statements are an integral part of this statement.

Unrestricted Capital Outlay	Non-Major Governmental Funds	Total Governmental Funds
\$ 161,352	\$ 1,177,543	\$ 3,786,842
1,532,772	3,041,039	18,881,461
2,021,642	4,290,895	22,125,743
	1,988,399	7,568,223
<u>3,715,766</u>	<u>10,497,876</u>	<u>52,362,269</u>
	5,192,419	20,282,395
	1,076,966	5,349,262
	325,996	4,603,726
	6,263	4,925,636
	109,441	3,350,054
1,875,140	172,919	1,592,687
		3,302,434
195,310	2,305,000	2,500,310
19,306	608,700	628,006
<u>2,089,756</u>	<u>9,797,704</u>	<u>46,534,510</u>
<u>1,626,010</u>	<u>700,172</u>	<u>5,827,759</u>
	1,207	481,962
	(109,004)	(481,962)
	(107,797)	
<u>1,626,010</u>	<u>592,375</u>	<u>5,827,759</u>
4,072,106	2,335,994	17,699,131
<u>\$ 5,698,116</u>	<u>\$ 2,928,369</u>	<u>\$ 23,526,890</u>

**CASA GRANDE UNION HIGH SCHOOL DISTRICT NO. 82**  
**RECONCILIATION OF THE STATEMENT OF REVENUES, EXPENDITURES AND CHANGES**  
**IN FUND BALANCES - GOVERNMENTAL FUNDS TO THE STATEMENT OF ACTIVITIES**  
**YEAR ENDED JUNE 30, 2022**

<b>Changes in fund balances - total governmental funds</b>		<b>\$ 5,827,759</b>
<p>Amounts reported for <i>governmental activities</i> in the Statement of Activities are different because:</p>		
<p>Governmental funds report the portion of capital outlay for capitalized assets as expenditures. However, in the Statement of Activities, the costs of those assets are allocated over their estimated useful lives and reported as depreciation expense.</p>		
Expenditures for capitalized assets	\$ 1,479,542	
Less current year depreciation	<u>(2,534,117)</u>	(1,054,575)
<p>Some revenues in the Statement of Activities that do not provide current financial resources are not reported as revenues in the funds.</p>		
Property taxes	3,251	
Intergovernmental	<u>266,228</u>	269,479
<p>Repayments of long-term debt principal are expenditures in the governmental funds, but the repayment reduces long-term liabilities in the Statement of Net Position.</p>		
Financed purchase principal retirement	195,310	
Bond principal retirement	<u>2,305,000</u>	2,500,310
<p>Governmental funds report pension contributions as expenditures. However, they are reported as deferred outflows of resources in the Statement of Net Position. The change in the net pension liability, adjusted for deferred items, is reported as pension expense in the Statement of Activities.</p>		
Current year pension contributions	2,197,126	
Pension expense	<u>(2,362,456)</u>	(165,330)
<p>Some expenses reported in the Statement of Activities do not require the use of current financial resources and, therefore, are not reported as expenditures in governmental funds.</p>		
Amortization of deferred bond items	39,845	
Compensated absences	<u>142,814</u>	<u>182,659</u>
<b>Changes in net position in governmental activities</b>		<b>\$ <u>7,560,302</u></b>

**The notes to the basic financial statements are an integral part of this statement.**

**CASA GRANDE UNION HIGH SCHOOL DISTRICT NO. 82**  
**NOTES TO FINANCIAL STATEMENTS**  
**JUNE 30, 2022**

**NOTE 1 – SUMMARY OF SIGNIFICANT ACCOUNTING POLICIES**

The financial statements of the Casa Grande Union High School District No. 82 (District) have been prepared in conformity with accounting principles generally accepted in the United States of America as applied to government units. The Governmental Accounting Standards Board (GASB) is the accepted standard-setting body for establishing governmental accounting and financial reporting principles.

During the year ended June 30, 2022, the District implemented the provisions of GASB Statement No. 87, *Leases*. This Statement increases the usefulness of the financial statements by requiring recognition of certain lease assets and liabilities for leases that previously were classified as operating leases. The statement establishes a single model for lease accounting based on the foundational principle that leases are financings of the right to use an underlying asset. Under this Statement, a lessee is required to recognize a lease liability and an intangible right-to-use lease asset, and a lessor is required to recognize a lease receivable and a deferred inflow of resources. Beginning balances for leases receivable and deferred inflows for leases were restated by \$660,543 each, resulting in no net effect on beginning balances reported in the financial statements due to the implementation of this standard.

The more significant of the District's accounting policies are described below.

**A. Reporting Entity**

The Governing Board is organized under Section 15-321 of the Arizona Revised Statutes (A.R.S.). Management of the District is independent of other state or local governments. The County Treasurer collects taxes for the District, but exercises no control over its expenditures/expenses.

The membership of the Governing Board consists of five members elected by the public. Under existing statutes, the Governing Board's duties and powers include, but are not limited to, the acquisition, maintenance and disposition of school property; the development and adoption of a school program; and the establishment, organization and operation of schools.

The Board also has broad financial responsibilities, including the approval of the annual budget, and the establishment of a system of accounting and budgetary controls.

The financial reporting entity consists of a primary government and its component units. A component unit is a legally separate entity that must be included in the reporting entity in conformity with generally accepted accounting principles. The District is a primary government because it is a special-purpose government that has a separately elected governing body, is legally separate, and is fiscally independent of other state or local governments.

**CASA GRANDE UNION HIGH SCHOOL DISTRICT NO. 82**  
**NOTES TO FINANCIAL STATEMENTS**  
**JUNE 30, 2022**

**NOTE 1 – SUMMARY OF SIGNIFICANT ACCOUNTING POLICIES**

Furthermore, there are no component units combined with the District for financial statement presentation purposes, and the District is not included in any other governmental reporting entity. Consequently, the District's financial statements include only the funds of those organizational entities for which its elected governing board is financially accountable. The District's major operations include education, student transportation, construction and maintenance of District facilities, food services, bookstore, and athletic functions.

**B. Government-Wide and Fund Financial Statements**

The government-wide financial statements (i.e., the statement of net position and the statement of activities) present financial information about the District as a whole. The reported information includes all of the nonfiduciary activities of the District and its component unit. For the most part, the effect of internal activity has been removed from these statements. These statements are to distinguish between the governmental and business-type activities of the District. Governmental activities normally are supported by taxes and intergovernmental revenues, and are reported separately from business-type activities, which rely to a significant extent on fees and charges for support. The District does not have any business-type activities or fiduciary activities.

The statement of activities demonstrates the degree to which the direct expenses of a given function or segment are offset by program revenues. Direct expenses are those that are clearly identifiable with a specific function or segment. Program revenues include 1) charges to customers or applicants who purchase, use, or directly benefit from goods, services, or privileges provided by a given function or segment and 2) grants and contributions that are restricted to meeting the operational or capital requirements of a particular function or segment. Taxes, unrestricted federal, state and county aid, and other items not included among program revenues are reported instead as general revenues.

**C. Measurement Focus, Basis of Accounting, and Financial Statement Presentation**

**Government-Wide Financial Statements** – The government-wide financial statements are reported using the economic resources measurement focus and the accrual basis of accounting. Revenues are recorded when earned and expenses are recorded when a liability is incurred, regardless of the timing of related cash flows. Property taxes are recognized as revenues in the year for which they are levied. Grants and similar items are recognized as revenue as soon as all eligibility requirements imposed by the grantor or provider have been met. As a general rule, the effect of internal activity has been eliminated from the government-wide financial statements; however, the effects of interfund services provided and used between functions are reported as expenses and program revenues at amounts approximating their external exchange value.

**CASA GRANDE UNION HIGH SCHOOL DISTRICT NO. 82**  
**NOTES TO FINANCIAL STATEMENTS**  
**JUNE 30, 2022**

**NOTE 1 – SUMMARY OF SIGNIFICANT ACCOUNTING POLICIES**

**Fund Financial Statements** – Governmental fund financial statements are reported using the current financial resources measurement focus and the modified accrual basis of accounting. Revenues are recognized as soon as they are both measurable and available. Revenues are considered to be available when they are collectible within the current period or soon enough thereafter to pay liabilities of the current period. For this purpose, the District considers revenues to be available if they are collected within 60 days of the end of the current fiscal period. Expenditures generally are recorded when a liability is incurred, as under accrual accounting. However, debt service expenditures, as well as expenditures related to compensated absences, and claims and judgments, are recorded only when payment is due.

Property taxes, federal, state and county aid, and investment income associated with the current fiscal period are all considered to be susceptible to accrual and have been recognized as revenues of the current fiscal period. Food services and miscellaneous revenues are not susceptible to accrual because generally they are not measurable until received in cash. Grants and similar awards are recognized as revenue as soon as all eligibility requirements imposed by the grantor or provider have been met. Unearned revenues arise when resources are received by the District before it has legal claim to them, as when grant monies are received prior to meeting all eligibility requirements imposed by the provider.

Delinquent property taxes and other receivables that will not be collected within the available period have been reported as unavailable revenues on the governmental fund financial statements.

The focus of governmental fund financial statements is on major funds rather than reporting funds by type. Each major fund is presented in a separate column. Non-major funds are aggregated and presented in a single column.

The District reports the following major governmental funds:

**General Fund** – The General Fund is the District’s primary operating fund. It accounts for all resources used to finance District maintenance and operation except those required to be accounted for in other funds. The General Fund includes the District’s Maintenance and Operation Fund as well as certain activities budgeted in separate funds in accordance with A.R.S. These funds are maintained as separate funds for budgetary purposes but do not meet the criteria for separate reporting in the financial statements.

**Other Federal Projects Fund** – The Other Federal Projects Fund accounts for financial assistance received for other supplemental federal projects.

**CASA GRANDE UNION HIGH SCHOOL DISTRICT NO. 82**  
**NOTES TO FINANCIAL STATEMENTS**  
**JUNE 30, 2022**

**NOTE 1 – SUMMARY OF SIGNIFICANT ACCOUNTING POLICIES**

Food Service Fund – The Food Service Fund accounts for the financial activity of school activities that have as their purpose the preparation and serving of regular and incidental meals and snacks in connection with school functions.

Unrestricted Capital Outlay Fund – The Unrestricted Capital Outlay Fund accounts for transactions relating to the acquisition of capital items.

**D. Cash and Investments**

A.R.S. require the District to deposit certain cash with the County Treasurer, except as discussed below. Cash with the County Treasurer is pooled for investment purposes, except for cash of the Debt Service and Bond Building Funds that may be invested separately. Interest earned from investments purchased with pooled monies is allocated to each of the District's funds based on their average balances. As required by statute, interest earnings of the Bond Building Fund are recorded initially in that fund, but then transferred to the Debt Service Fund. All investments are stated at fair value.

Statute authorizes the District to separately invest monies of the Bond Building and Debt Service Funds in the State Treasurer's investment pools; obligations issued and guaranteed by the United States or any of its agencies or instrumentalities; specified state and local government bonds and notes; and interest bearing savings accounts or certificates of deposit.

Statute authorizes the District to deposit monies of the Auxiliary Operations and Student Activities Funds in bank accounts. Monies in these funds may also be invested. In addition, statute authorizes the District to maintain various bank accounts such as clearing accounts to temporarily deposit receipts before they are transmitted to the County Treasurer; revolving accounts to pay minor disbursements; and withholdings accounts for taxes and employee insurance programs. Some of these bank accounts may be interest bearing.

Statute does not include any requirements for credit risk, concentration of credit risk, interest rate risk, or foreign currency risk. Arizona statute requires a pooled collateral program for public deposits and a Statewide Collateral Pool Administrator (Administrator) in the State Treasurer's Office. The purpose of the pooled collateral program is to ensure that governmental entities' public deposits placed in participating depositories are secured with collateral of 102 percent of the public deposits, less any applicable federal depository insurance. An eligible depository may not retain or accept any public deposit unless it has deposited the required collateral with a qualified escrow agent or the Administrator. The Administrator manages the pooled collateral program, including reporting on each depository's compliance with the program.

**CASA GRANDE UNION HIGH SCHOOL DISTRICT NO. 82**  
**NOTES TO FINANCIAL STATEMENTS**  
**JUNE 30, 2022**

**NOTE 1 – SUMMARY OF SIGNIFICANT ACCOUNTING POLICIES**

**E. Investment Income**

Investment income is composed of interest, dividends, and net changes in the fair value of applicable investments. Investment income is included in other local revenue in the governmental fund financial statements.

**F. Receivables and Payables**

Activity between funds that is representative of lending/borrowing arrangements outstanding at the end of the fiscal year is referred to as either “due to/from other funds” (i.e., the current portion of interfund loans) or “advances to/from other funds” (i.e., the non-current portion of interfund loans). All other outstanding balances between funds are reported as “due to/from other funds.” Interfund balances between governmental funds are eliminated on the Statement of Net Position. All receivables, including property taxes receivable, are shown net of an allowance for uncollectibles.

**G. Property Tax Calendar**

The County Treasurer is responsible for collecting property taxes for all governmental entities within the county. The county levies real and personal property taxes on or before the third Monday in August, that become due and payable in two equal installments. The first installment is due on the first day of October and becomes delinquent after the first business day of November. The second installment is due on the first day of March of the next year and becomes delinquent after the first business day of May.

Pursuant to A.R.S., a lien against assessed real and personal property attaches on the first day of January preceding assessment and levy; however according to case law, an enforceable legal claim to the asset does not arise.

**H. Prepaid Items**

Certain payments to vendors reflect costs applicable to future accounting periods and are recorded as prepaid items in both the government-wide and fund financial statements. Prepaid items are recorded as expenses when consumed in the government-wide financial statements and as expenditures when purchased in the fund financial statements.

**I. Capital Assets**

Capital assets, which include land and improvements; buildings and improvements; vehicles, furniture, and equipment; and construction in progress, are reported in the government-wide financial statements.

**CASA GRANDE UNION HIGH SCHOOL DISTRICT NO. 82**  
**NOTES TO FINANCIAL STATEMENTS**  
**JUNE 30, 2022**

**NOTE 1 – SUMMARY OF SIGNIFICANT ACCOUNTING POLICIES**

Capital assets are defined by the District as assets with an initial, individual cost in excess of \$5,000 and an estimated useful life of more than one year. Capital assets are recorded at historical cost if purchased or constructed. Donated capital assets are recorded at acquisition value at the date of donation.

The costs of normal maintenance and repairs that do not add to the value of the asset or materially extend the life of the asset are not capitalized.

Capital assets are depreciated using the straight-line method over the following estimated useful lives:

Land improvements	10 – 50 years
Buildings and improvements	10 – 50 years
Vehicles, furniture and equipment	5 – 25 years

**J. Deferred Outflows/Inflows of Resources**

In addition to assets, the statement of financial position may report a separate section for deferred outflows of resources. This separate financial statement element, deferred outflows of resources, represents a consumption of net assets that applies to a future period and so will not be recognized as an outflow of resources (expense/expenditure) until then.

In addition to liabilities, the statement of financial position may report a separate section for deferred inflows of resources. This separate financial statement element, deferred inflows of resources, represents an acquisition of net assets that applies to a future period and so will not be recognized as an inflow of resources (revenue) until that time.

**K. Compensated Absences**

The District's employee vacation and sick leave policies generally provide for granting vacation and sick leave with pay in varying amounts. Only benefits considered vested are recognized in the financial statements. The liability for vacation and sick leave is reported in the government-wide financial statements. A liability for these amounts is reported in governmental funds only if they have matured, for example, as a result of employee leave, resignations and retirements. Generally, resources from the General Fund are used to pay for compensated absences.

**CASA GRANDE UNION HIGH SCHOOL DISTRICT NO. 82**  
**NOTES TO FINANCIAL STATEMENTS**  
**JUNE 30, 2022**

**NOTE 1 – SUMMARY OF SIGNIFICANT ACCOUNTING POLICIES**

**L. Leases**

As lessor, if there is no stated rate in the lease contract (or if the stated rate is not the rate the District charges the lessee) and the implicit rate cannot be determined, the District uses an interest rate based on the Applicable Federal Rate as the discount rate to measure lease receivables.

**M. Pensions**

For purposes of measuring the net pension liability, related deferred outflows of resources and deferred inflows of resources, and pension expense, information about the pension plan's fiduciary net position and additions to/deductions from the plan's fiduciary net position have been determined on the same basis as they are reported by the plan. For this purpose, benefit payments (including refunds of employee contributions) are recognized when due and payable in accordance with the benefit terms. Investments are reported at fair value.

**N. Long-term Obligations**

In the government-wide financial statements, long-term debt and other long-term obligations are reported as liabilities on the statement of net position. Bond premiums and discounts are amortized over the life of the bonds using the straight-line method. Deferred amounts on refunding result from the difference between the carrying value of refunded debt and its reacquisition price. This amount is deferred and amortized over the shorter of the life of the refunded or refunding debt.

In the fund financial statements, governmental fund types recognize bond premiums and discounts, as well as bond issuance costs, during the current period. The face amount of debt issued is reported as other financing sources. Premiums received on debt issuances are reported as other financing sources while discounts on debt issuances are reported as other financing uses. Issuance costs, whether or not withheld from the actual debt proceeds received, are reported as debt service expenditures.

**O. Interfund Activity**

Flows of cash from one fund to another without a requirement for repayment are reported as interfund transfers. Interfund transfers between governmental funds are eliminated in the Statement of Activities. Interfund transfers in the fund financial statements are reported as other financing sources/uses in governmental funds.

**CASA GRANDE UNION HIGH SCHOOL DISTRICT NO. 82**  
**NOTES TO FINANCIAL STATEMENTS**  
**JUNE 30, 2022**

**NOTE 1 – SUMMARY OF SIGNIFICANT ACCOUNTING POLICIES**

**P. Net Position Flow Assumption**

In the government-wide financial statements the District applies restricted resources first when outlays are incurred for purposes for which either restricted or unrestricted amounts are available.

**Q. Estimates**

The preparation of the financial statements in conformity with accounting principles generally accepted in the United States of America requires management to make estimates and assumptions that affect the amounts reported in the financial statements and accompanying notes. Actual results may differ from those estimates.

**NOTE 2 – FUND BALANCE CLASSIFICATIONS**

Fund balances of the governmental funds are reported separately within classifications based on a hierarchy of the constraints placed on the use of those resources. The classifications are based on the relative strength of the constraints that control how the specific amounts can be spent. The classifications are nonspendable, restricted, and unrestricted, which includes committed, assigned, and unassigned fund balance classifications.

***Nonspendable.*** The nonspendable fund balance classification includes amounts that cannot be spent because they are not in spendable form, or are legally or contractually required to be maintained intact.

***Restricted.*** Fund balance is reported as restricted when constraints placed on the use of resources are either externally imposed by creditors (such as through debt covenants), grantors, contributors, or laws or regulations of other governments or is imposed by law through constitutional provisions or enabling legislation.

***Committed.*** The committed fund balance classification includes amounts that can be used only for the specific purposes imposed by formal action of the Governing Board. Those committed amounts cannot be used for any other purpose unless the Governing Board removes or changes the specified use by taking the same type of action it employed to previously commit those amounts. The District does not have a formal policy or procedures for the utilization of committed fund balance, accordingly, no committed fund balance amounts are reported.

**CASA GRANDE UNION HIGH SCHOOL DISTRICT NO. 82**  
**NOTES TO FINANCIAL STATEMENTS**  
**JUNE 30, 2022**

**NOTE 2 – FUND BALANCE CLASSIFICATIONS**

*Assigned.* Amounts in the assigned fund balance classification are intended to be used by the District for specific purposes but do not meet the criteria to be classified as restricted or committed. In governmental funds other than the General Fund, assigned fund balance represents the remaining amount that is not restricted or committed. In the General Fund, assigned amounts represent intended uses established by the Governing Board or a management official delegated that authority by the formal Governing Board action. The District does not have a formal policy or procedures for the utilization of assigned fund balance, accordingly, no assigned fund balance amounts are reported.

*Unassigned.* Unassigned fund balance is the residual classification for the General Fund and includes all spendable amounts not contained in the other classifications. In other governmental funds, the unassigned classification is used only to report a deficit balance resulting from overspending for specific purposes for which amounts had been restricted, committed, or assigned.

The District applies restricted resources first when outlays are incurred for purposes for which either restricted or unrestricted (committed, assigned, and unassigned) amounts are available. Similarly, within unrestricted fund balance, committed amounts are reduced first followed by assigned, and then unassigned amounts when expenditures are incurred for purposes for which amounts in any of the unrestricted fund balance classifications could be used.

The table below provides detail of the major components of the District’s fund balance classifications at year end.

	General Fund	Other Federal Projects Fund	Food Service Fund	Unrestricted Capital Outlay Fund	Non-Major Governmental Funds
Fund Balances:					
Restricted:					
Debt service	\$	\$	\$	\$	\$ 1,180,245
Capital projects				5,698,116	12,578
Voter approved initiatives					966,429
Federal and state projects		34,939			447,297
Food service			2,984,518		
Career technical education					281
Civic center					147,188
Community school					36,606
Extracurricular activities					800
Student activities					457,386
Other purposes					33,654
Unassigned	11,880,948				(354,095)
Total fund balances	\$ 11,880,948	\$ 34,939	\$ 2,984,518	\$ 5,698,116	\$ 2,928,369

**CASA GRANDE UNION HIGH SCHOOL DISTRICT NO. 82**  
**NOTES TO FINANCIAL STATEMENTS**  
**JUNE 30, 2022**

**NOTE 3 – STEWARDSHIP, COMPLIANCE AND ACCOUNTABILITY**

**Individual Deficit Fund Balances** – At year end, the following individual non-major governmental funds reported deficits in fund balance.

	Deficit
Non-Major Governmental Funds:	
Title I Grants	\$ 127,849
Professional Development and Technology Grants	11,318
Title IV Grants	4,698
Limited English and Immigrant Students	85
Special Education Grants	196,527
Vocational Education	9,458
Arizona Industry Credentials Incentive	4,160

The deficits arose because of operations during the year and/or because of pending grant reimbursements. Additional revenues received in fiscal year 2022-23 are expected to eliminate the deficits.

**Excess Expenditures Over Budget** – At year end, the District had expenditures in funds that exceeded the budgets, however, this does not constitute a violation of any legal provisions.

**NOTE 4 – CASH AND INVESTMENTS**

*Custodial Credit Risk – Deposits.* Custodial credit risk is the risk that in the event of bank failure the District’s deposits may not be returned to the District. The District does not have a deposit policy for custodial credit risk. At year end, the carrying amount of the District’s deposits was \$1,426,573, and the bank balance was \$1,509,290. At year end, \$1,037,339 of the District’s deposits was covered by collateral held by the pledging financial institution’s trust department or agent but not in the District’s name.

*Fair Value Measurements.* The District categorizes its fair value measurements within the fair value hierarchy established by generally accepted accounting principles. The hierarchy is based on the valuation inputs used to measure the fair value of the asset.

- Level 1 inputs are quoted prices in active markets for identical assets
- Level 2 inputs are significant other observable inputs
- Level 3 inputs are significant unobservable inputs

**CASA GRANDE UNION HIGH SCHOOL DISTRICT NO. 82**  
**NOTES TO FINANCIAL STATEMENTS**  
**JUNE 30, 2022**

**NOTE 4 – CASH AND INVESTMENTS**

The County Treasurer’s pool is an external investment pool with no regulatory oversight. The pool is not required to register (and is not registered) with the Securities and Exchange Commission. The fair value of each participant’s position in the County Treasurer investment pool approximates the value of the participant’s shares in the pool and the participants’ shares are not identified with specific investments. Participants in the pool are not required to categorize the value of shares in accordance with the fair value hierarchy.

At year end, the District’s investments consisted of the following:

	<u>Average Maturities</u>	<u>Fair Value</u>
County Treasurer’s investment pool	2.46 years	\$ 16,605,951

*Interest Rate Risk.* The District does not have a formal investment policy that limits investment maturities as a means of managing its exposure to fair value losses arising from increasing interest rates.

*Credit Risk.* The District has no investment policy that would further limit its investment choices. As of year end, the District’s investment in the County Treasurer’s investment pool did not receive a credit quality rating from a national rating agency.

*Custodial Credit Risk – Investments.* The District’s investment in the County Treasurer’s investment pool represents a proportionate interest in the pool’s portfolio; however, the District’s portion is not identified with specific investments and is not subject to custodial credit risk.

**CASA GRANDE UNION HIGH SCHOOL DISTRICT NO. 82**  
**NOTES TO FINANCIAL STATEMENTS**  
**JUNE 30, 2022**

**NOTE 5 – RECEIVABLES**

Receivable balances, net of allowance for uncollectibles, have been disaggregated by type and presented separately in the financial statements with the exception of due from governmental entities. Due from governmental entities, net of allowance for uncollectibles, as of year end for the District’s major funds and non-major governmental funds in the aggregate were as follows:

	General Fund	Other Federal Projects Fund	Food Service Fund	Unrestricted Capital Outlay Fund	Non-Major Governmental Funds
Due from other governmental entities:					
Due from federal government	\$ 26,525	\$ 1,370,485	\$ 78,849	\$	\$ 655,075
Due from state government	3,815,906			495,848	81,780
Due from other districts					293,579
Net due from governmental entities	<u>\$3,842,431</u>	<u>\$ 1,370,485</u>	<u>\$ 78,849</u>	<u>\$ 495,848</u>	<u>\$ 1,030,434</u>

**NOTE 6 – LEASES RECEIVABLE**

The District acts as lessor for cell tower agreements under the provisions of contracts classified as leases. The related receivables under the lease agreements have been recorded at the present value of their future minimum lease payments as of the inception date. Lease revenue of \$35,667 is recorded as other local revenue in the General Fund.

Future minimum lease payments to be received under the lease agreements at year end are summarized as follows:

Year ending June 30:	
2023	\$ 33,232
2024	33,794
2025	34,588
2026	36,410
2027	37,036
2028-32	108,118
2033-37	90,896
2038-42	99,985
2043-47	109,983
2048-50	65,709
Total	<u>\$ 649,751</u>

**CASA GRANDE UNION HIGH SCHOOL DISTRICT NO. 82**  
**NOTES TO FINANCIAL STATEMENTS**  
**JUNE 30, 2022**

**NOTE 7 – CAPITAL ASSETS**

A summary of capital asset activity for the current fiscal year follows:

<u>Governmental Activities</u>	<u>Beginning Balance</u>	<u>Increase</u>	<u>Decrease</u>	<u>Ending Balance</u>
Capital assets, not being depreciated:				
Land	\$ 183,498	\$	\$	\$ 183,498
Construction in progress		48,783		48,783
Total capital assets, not being depreciated	<u>183,498</u>	<u>48,783</u>		<u>232,281</u>
Capital assets, being depreciated:				
Land improvements	7,544,330	783,604		8,327,934
Buildings and improvements	98,260,769	397,942		98,658,711
Vehicles, furniture and equipment	5,761,691	249,213	8,519	6,002,385
Total capital assets being depreciated	<u>111,566,790</u>	<u>1,430,759</u>	<u>8,519</u>	<u>112,989,030</u>
Less accumulated depreciation for:				
Land improvements	(3,641,742)	(264,021)		(3,905,763)
Buildings and improvements	(33,267,662)	(2,009,451)		(35,277,113)
Vehicles, furniture and equipment	(3,760,834)	(260,645)	(8,519)	(4,012,960)
Total accumulated depreciation	<u>(40,670,238)</u>	<u>(2,534,117)</u>	<u>(8,519)</u>	<u>(43,195,836)</u>
Total capital assets, being depreciated, net	<u>70,896,552</u>	<u>(1,103,358)</u>		<u>69,793,194</u>
Governmental activities capital assets, net	<u>\$ 71,080,050</u>	<u>\$(1,054,575)</u>	<u>\$</u>	<u>\$ 70,025,475</u>

Depreciation expense was charged to governmental functions as follows:

Instruction	\$ 1,814,154
Support services – students and staff	104,404
Support services – administration	116,838
Operation and maintenance of plant services	425,156
Student transportation services	46,707
Operation of non-instructional services	26,858
Total depreciation expense – governmental activities	<u>\$ 2,534,117</u>

**Construction Commitments** – At year end, the District had contractual commitments related to new basketball court flooring at Casa Grande Union High School. At year end the District had spent \$48,783 on the projects and had estimated remaining contractual commitments of \$11,538. These projects are being funded with Unrestricted Capital Outlay revenues.

**CASA GRANDE UNION HIGH SCHOOL DISTRICT NO. 82**  
**NOTES TO FINANCIAL STATEMENTS**  
**JUNE 30, 2022**

**NOTE 8 – FINANCED PURCHASES PAYABLE**

The District has acquired equipment under the provisions of a contract classified as a financed purchase payable. In accordance with GASB Statement No. 87 *Leases*, contracts previously recorded as capital leases have been reclassified as financed purchases payable in the fiscal year. Revenues from the Unrestricted Capital Outlay Fund are used to pay the debt obligation.

Annual debt service requirements to maturity on financed purchases payable at year end are summarized as follows:

Year ending June 30:	Governmental Activities	
	Principal	Interest
2023	\$ 200,282	\$ 14,333
2024	205,381	9,233
2025	210,610	4,004
Total	<u>\$ 616,273</u>	<u>\$ 27,570</u>

**NOTE 9 – GENERAL OBLIGATION BONDS PAYABLE**

Bonds payable at year end consisted of the following outstanding general obligation bonds. The bonds are both callable and noncallable with interest payable semiannually. Property taxes from the Debt Service Fund are used to pay bonded debt. The District’s legal debt limit is \$113.8 million and the available margin is \$103.5 million.

Purpose	Original Amount Issued	Interest Rates	Remaining Maturities	Outstanding Principal June 30, 2022	Due Within One Year
<b>Governmental activities:</b>					
Refunding Bonds, Series 2015	\$ 19,985,000	2.0%-5.0%	7/1/23-26	\$ 10,330,000	\$ 2,410,000

Annual debt service requirements to maturity on general obligation bonds at year end are summarized as follows:

Year ending June 30:	Governmental Activities	
	Principal	Interest
2023	\$ 2,410,000	\$ 516,500
2024	2,515,000	396,000
2025	2,635,000	270,250
2026	2,770,000	138,500
Total	<u>\$ 10,330,000</u>	<u>\$ 1,321,250</u>

**CASA GRANDE UNION HIGH SCHOOL DISTRICT NO. 82**  
**NOTES TO FINANCIAL STATEMENTS**  
**JUNE 30, 2022**

**NOTE 10 – CHANGES IN LONG-TERM LIABILITIES**

Long-term liability activity for the current fiscal year was as follows:

	Beginning Balance	Additions	Reductions	Ending Balance	Due Within One Year
<b>Governmental activities:</b>					
Bonds payable:					
General obligation bonds	\$ 12,635,000	\$	\$ 2,305,000	\$10,330,000	\$ 2,410,000
Premium	795,049		265,018	530,031	
Total bonds payable	<u>13,430,049</u>		<u>2,570,018</u>	<u>10,860,031</u>	<u>2,410,000</u>
Financed purchases payable	811,583		195,310	616,273	200,282
Net pension liability	27,065,757		7,017,422	20,048,335	
Compensated absences payable	941,637	265,017	407,831	798,823	244,942
Governmental activity long-term liabilities	<u>\$ 42,249,026</u>	<u>\$ 265,017</u>	<u>\$ 10,190,581</u>	<u>\$32,323,462</u>	<u>\$ 2,855,224</u>

**NOTE 11 – INTERFUND RECEIVABLES AND PAYABLES, AND TRANSFERS**

At year end, interfund balances were as follows:

**Due to/from other funds** – At year end, the Other Federal Projects Fund and several non-major governmental funds had negative cash balances of \$1,067,676 and \$830,843, respectively, in the Treasurer’s pooled cash accounts. Negative cash on deposit with the County Treasurer was reduced by interfund borrowing with the General Fund. All interfund balances are expected to be paid within one year.

**Interfund transfers** – Transfers between the General Fund, Other Federal Projects Fund, Food Service Fund, and non-major governmental funds of \$481,962 were used to move Federal grant funds restricted for indirect costs.

**NOTE 12 – CONTINGENT LIABILITIES**

**Compliance** – Amounts received or receivable from grantor agencies are subject to audit and adjustment by grantor agencies, principally the federal government. Any disallowed claims, including amounts already collected, may constitute a liability of the applicable funds. The amount, if any, of expenditures/expenses that may be disallowed by the grantor cannot be determined at this time, although the District expects such amounts, if any, to be immaterial.

**CASA GRANDE UNION HIGH SCHOOL DISTRICT NO. 82**  
**NOTES TO FINANCIAL STATEMENTS**  
**JUNE 30, 2022**

**NOTE 13 – RISK MANAGEMENT**

The District is exposed to various risks of loss related to torts; theft of, damage to, and destruction of assets; errors and omissions; injuries to employees; and natural disasters.

The District was unable to obtain general property and liability insurance at a cost it considered to be economically justifiable. Therefore, the District joined the Arizona School Risk Retention Trust, Inc. (ASRRT). ASRRT is a public entity risk pool currently operating as a common risk management and insurance program for school districts and community colleges in the State. The District pays an annual premium to ASRRT for its general insurance coverage. The agreement provides that ASRRT will be self-sustaining through member premiums and will reinsure through commercial companies for claims in excess of specified amounts.

The District's employees have health insurance coverage with the Kairos Health Arizona, Inc. Kairos Health is a public entity risk pool currently operating as a common risk management and insurance program for school districts in the State. The District pays a monthly premium to Kairos Health for employees' health insurance coverage. The agreement provides that Kairos Health will be self-sustaining through member premiums and will reinsure through commercial companies for claims in excess of specified amounts.

The District joined the Arizona School Alliance for Workers' Compensation, Inc. (Alliance) together with other school districts in the state for risks of loss related to workers' compensation claims. The Alliance is a public entity risk pool currently operating as a common risk management and insurance program for school districts in the State. The District pays quarterly premiums to the Alliance for its employee workers' compensation coverage. The agreement provides that the Alliance will be self-sustaining through members' premiums and will reinsure through commercial companies for claims in excess of specified amounts for each insured event.

**NOTE 14 – PENSIONS**

**Plan Description.** District employees participate in the Arizona State Retirement System (ASRS). The ASRS administers a cost-sharing multiple-employer defined benefit pension plan, a cost-sharing multiple-employer defined benefit health insurance premium benefit (OPEB) plan, and a cost-sharing multiple-employer defined benefit long-term disability (OPEB) plan. The Arizona State Retirement System Board governs the ASRS according to the provisions of A.R.S. Title 38, Chapter 5, Articles 2 and 2.1. ASRS is a component unit of the State of Arizona. The ASRS issues a publicly available financial report that includes its financial statements and required supplementary information. The report is available on the ASRS website at [www.azasrs.gov](http://www.azasrs.gov).

The ASRS OPEB plans are not further disclosed because of their relative insignificance to the District's financial statements.

**CASA GRANDE UNION HIGH SCHOOL DISTRICT NO. 82**  
**NOTES TO FINANCIAL STATEMENTS**  
**JUNE 30, 2022**

**NOTE 14 – PENSIONS**

**Benefits Provided.** The ASRS provides retirement, health insurance premium supplement, long-term disability, and survivor benefits. State statute establishes benefit terms. Retirement benefits are calculated on the basis of age, average monthly compensation, and service credit as follows:

	Retirement Initial Membership Date:	
	Before July 1, 2011	On or After July 1, 2011
Years of service and age required to receive benefit	Sum of years and age equals 80 10 years, age 62 5 years, age 50* Any years, age 65	30 years, age 55 25 years, age 60 10 years, age 62 5 years, age 50* Any years, age 65
Final average salary is based on	Highest 36 months of last 120 months	Highest 60 months of last 120 months
Benefit percent per year of service	2.1% to 2.3%	2.1% to 2.3%

\*With actuarially reduced benefits

Retirement benefits for members who joined the ASRS prior to September 13, 2013, are subject to automatic cost-of-living adjustments based on excess investment earnings. Members with a membership date on or after September 13, 2013, are not eligible for cost-of-living adjustments. Survivor benefits are payable upon a member's death. For retired members, the survivor benefit is determined by the retirement benefit option chosen. For all other members, the beneficiary is entitled to the member's account balance that includes the member's contributions and employer's contributions, plus interest earned.

**Contributions.** In accordance with state statutes, annual actuarial valuations determine active member and employer contribution requirements. The combined active member and employer contribution rates are expected to finance the costs of benefits employees earn during the year, with an additional amount to finance any unfunded accrued liability. For the current fiscal year, active ASRS members were required by statute to contribute at the actuarially determined rate of 12.41 percent (12.22 percent for retirement and 0.19 percent for long-term disability) of the members' annual covered payroll, and the District was required by statute to contribute at the actuarially determined rate of 12.41 percent (12.01 percent for retirement, 0.21 percent for health insurance premium benefit, and 0.19 percent for long-term disability) of the active members' annual covered payroll. The District's contributions to the pension plan for the year ended June 30, 2022 were \$2.2 million.

**CASA GRANDE UNION HIGH SCHOOL DISTRICT NO. 82**  
**NOTES TO FINANCIAL STATEMENTS**  
**JUNE 30, 2022**

**NOTE 14 – PENSIONS**

Employers are also required to pay an Alternate Contribution Rate (ACR), for retired members who return to work in positions that would typically be filled by an employee who contributes to ASRS. The District was required by statute to contribute at the actuarially determined rate of 10.22 percent (10.13 for retirement and 0.09 percent for long-term disability). ACR contributions are included in employer contributions presented above.

The District’s pension contributions are paid by the same funds as the employee’s salary, with the largest component coming from the General Fund.

**Pension Liability.** The net pension liability was measured as of June 30, 2021. The total liability used to calculate the net liability was determined using update procedures to roll forward the total liability from an actuarial valuation as of June 30, 2020, to the measurement date of June 30, 2021. The District’s proportion of the net liability was based on the District’s actual contributions to the applicable plan relative to the total of all participating employers’ contributions to the plan for the year ended June 30, 2021. The total liabilities as of June 30, 2021, reflect changes in actuarial assumptions based on the results of an actuarial experience study for the 5-year period ended June 30, 2020, including decreasing the discount rate from 7.5 percent to 7.0 percent and changing the projected salary increases from 2.7-7.2 percent to 2.9-8.4 percent.

At June 30, 2022, the District reported the following amounts for its proportionate share of the pension plan net liability. In addition, at June 30, 2021, the District’s percentage proportion for the plan and the related change from its proportion measured as of June 30, 2020 was:

Net Liability	District % Proportion	Increase (Decrease)
\$ 20,048,335	0.153	(0.003)

**Pension Expense and Deferred Outflows/Inflows of Resources.** The District has deferred outflows and inflows of resources related to the net pension liability. Certain changes in the net pension liability are recognized as pension expense over a period of time rather than the year of occurrence. The District’s pension expense for the year ended June 30, 2022 was \$2.4 million.

**CASA GRANDE UNION HIGH SCHOOL DISTRICT NO. 82**  
**NOTES TO FINANCIAL STATEMENTS**  
**JUNE 30, 2022**

**NOTE 14 – PENSIONS**

The District reported deferred outflows of resources and deferred inflows of resources related to pensions from the following sources:

	Deferred Outflows of Resources	Deferred Inflows of Resources
Differences between expected and actual experience	\$ 305,618	\$
Changes of assumptions or other inputs	2,609,451	
Net difference between projected and actual earnings on pension investments		6,352,018
Changes in proportion and differences between contributions and proportionate share of contributions		393,395
Contributions subsequent to the measurement date	2,197,126	
Total	\$ 5,112,195	\$ 6,745,413

The amounts of deferred outflows of resources resulting from contributions subsequent to the measurement date as reported in the table above will be recognized as an adjustment of the net pension liability in the year ended June 30, 2023. Other amounts reported as deferred outflows of resources and deferred inflows of resources related to pensions will be recognized in pension expense as follows:

Year Ending June 30:		
2023	\$	(137,699)
2024		(103,398)
2025		(1,400,294)
2026		(2,188,953)

**CASA GRANDE UNION HIGH SCHOOL DISTRICT NO. 82**  
**NOTES TO FINANCIAL STATEMENTS**  
**JUNE 30, 2022**

**NOTE 14 – PENSIONS**

**Actuarial Assumptions.** The significant actuarial assumptions used to measure the total pension liability are as follows:

Actuarial valuation date	June 30, 2020
Actuarial roll forward date	June 30, 2021
Actuarial cost method	Entry age normal
Investment rate of return	7.0%
Inflation	2.3%
Projected salary increases	2.9-8.4%
Permanent base increases	Included
Mortality rates	2017 SRA Scale U-MP

The actuarial assumptions used in the June 30, 2020 valuation were based on the results of an actuarial experience study for the five-year period ended June 30, 2020. The purpose of the experience study was to review actual experience in relation to the actuarial assumptions in effect. The ASRS Board adopted the experience study recommended changes which were applied to the June 30, 2020, actuarial valuation.

The long-term expected rate of return on ASRS plan investments was determined to be 7.0 percent using a building-block method in which best-estimate ranges of expected future real rates of return (expected returns, net of investment expense and inflation) are developed for each major asset class. These ranges are combined to produce the long-term expected rate of return by weighting the expected future real rates of return by the target asset allocation percentage, excluding any expected inflation.

The target allocation and best estimates of geometric real rates of return for each major asset class are summarized in the following table:

Asset Class	Target Allocation	Long-Term Expected Geometric Real Rate of Return
Equity	50%	4.90%
Credit	20	5.20
Interest rate sensitive bonds	10	0.70
Real estate	20	5.70
Total	100%	

**CASA GRANDE UNION HIGH SCHOOL DISTRICT NO. 82**  
**NOTES TO FINANCIAL STATEMENTS**  
**JUNE 30, 2022**

**NOTE 14 – PENSIONS**

**Discount Rate.** The discount rate used to measure the total pension liability was 7.0 percent. The discount rate was lowered in the roll forward for the year June 30, 2021 from 7.5 percent, which was used for the actuarial assumptions at the valuation date. The projection of cash flows used to determine the discount rate assumed that contributions from participating employers will be made based on the actuarially determined rates based on the ASRS Board’s funding policy, which establishes the contractually required rate under Arizona statute. Based on those assumptions, the plan’s fiduciary net position was projected to be available to make all projected future benefit payments of current plan members. Therefore, the long-term expected rate of return on investments was applied to all periods of projected benefit payments to determine the total pension liability.

**Sensitivity of the Proportionate Share of the Net Pension Liability to Changes in the Discount Rate.** The following presents the District’s proportionate share of the net pension liability calculated using the discount rate of 7.0 percent, as well as what the proportionate share of the net pension liability would be if it were calculated using a discount rate that is 1-percentage-point lower or 1-percentage-point higher than the current rate:

	1% Decrease	Current Discount Rate	1% Increase
Rate	6.0%	7.0%	8.0%
Net liability	\$ 31,534,351	\$ 20,048,335	\$ 10,472,175

**Pension Plan Fiduciary Net Position.** Detailed information about the pension plan’s fiduciary net position is available in the separately issued ASRS financial report. The report is available on the ASRS website at [www.azasrs.gov](http://www.azasrs.gov).

(This page intentionally left blank)

**REQUIRED SUPPLEMENTARY INFORMATION**

(This page intentionally left blank)

**CASA GRANDE UNION HIGH SCHOOL DISTRICT NO. 82**  
**SCHEDULE OF REVENUES, EXPENDITURES AND**  
**CHANGES IN FUND BALANCES - BUDGET AND ACTUAL**  
**GENERAL**  
**YEAR ENDED JUNE 30, 2022**

	Budgeted Amounts		Non-GAAP Actual	Variance with Final Budget Positive (Negative)
	Original	Final		(Negative)
<b>Revenues:</b>				
Other local	\$	\$	\$ 1,064,382	\$ 1,064,382
Property taxes			14,307,650	14,307,650
State aid and grants			15,813,206	15,813,206
<b>Total revenues</b>			<u>31,185,238</u>	<u>31,185,238</u>
<b>Expenditures:</b>				
Current -				
Instruction	16,125,912	19,477,105	13,741,843	5,735,262
Support services - students and staff	3,413,196	4,559,645	3,682,390	877,255
Support services - administration	4,135,132	4,219,032	3,869,284	349,748
Operation and maintenance of plant services	5,252,242	5,563,403	4,734,835	828,568
Student transportation services	3,650,000	3,650,000	3,231,075	418,925
Operation of non-instructional services	247,000	247,000	305,619	(58,619)
<b>Total expenditures</b>	<u>32,823,482</u>	<u>37,716,185</u>	<u>29,565,046</u>	<u>8,151,139</u>
<b>Changes in fund balances</b>	<u>(32,823,482)</u>	<u>(37,716,185)</u>	<u>1,620,192</u>	<u>39,336,377</u>
<b>Fund balances, beginning of year</b>			6,091,222	6,091,222
Increase (decrease) in reserve for prepaid items			436,718	436,718
<b>Fund balances (deficits), end of year</b>	<u>\$ (32,823,482)</u>	<u>\$ (37,716,185)</u>	<u>\$ 8,148,132</u>	<u>\$ 45,864,317</u>

See accompanying notes to this schedule.

**CASA GRANDE UNION HIGH SCHOOL DISTRICT NO. 82  
SCHEDULE OF REVENUES, EXPENDITURES AND  
CHANGES IN FUND BALANCES - BUDGET AND ACTUAL  
OTHER FEDERAL PROJECTS  
YEAR ENDED JUNE 30, 2022**

	Budgeted Amounts		Non-GAAP Actual	Variance with Final Budget Positive (Negative)
	Original	Final		
<b>Revenues:</b>				
Federal aid, grants and reimbursements	\$	\$	\$ 3,052,514	\$ 3,052,514
<b>Total revenues</b>			<u>3,052,514</u>	<u>3,052,514</u>
<b>Expenditures:</b>				
Current -				
Instruction			766,916	(766,916)
Support services - students and staff			485,924	(485,924)
Support services - administration			415,326	(415,326)
Operation and maintenance of plant services			191,392	(191,392)
Student transportation services			9,538	(9,538)
Capital outlay	4,705,543	10,039,305	1,194,695	8,844,610
<b>Total expenditures</b>	<u>4,705,543</u>	<u>10,039,305</u>	<u>3,063,791</u>	<u>6,975,514</u>
<b>Excess (deficiency) of revenues over expenditures</b>	<u>(4,705,543)</u>	<u>(10,039,305)</u>	<u>(11,277)</u>	<u>10,028,028</u>
<b>Other financing sources (uses):</b>				
Transfers out			(76,792)	(76,792)
<b>Total other financing sources (uses)</b>			<u>(76,792)</u>	<u>(76,792)</u>
<b>Changes in fund balances</b>	<u>(4,705,543)</u>	<u>(10,039,305)</u>	<u>(88,069)</u>	<u>9,951,236</u>
<b>Fund balances, beginning of year</b>			23,321	23,321
Increase (decrease) in reserve for prepaid items			99,687	99,687
<b>Fund balances (deficits), end of year</b>	<u>\$ (4,705,543)</u>	<u>\$ (10,039,305)</u>	<u>\$ 34,939</u>	<u>\$ 10,074,244</u>

See accompanying notes to this schedule.

**CASA GRANDE UNION HIGH SCHOOL DISTRICT NO. 82  
SCHEDULE OF REVENUES, EXPENDITURES AND  
CHANGES IN FUND BALANCES - BUDGET AND ACTUAL  
FOOD SERVICE  
YEAR ENDED JUNE 30, 2022**

	Budgeted Amounts		Actual	Variance with Final Budget Positive (Negative)
	Original	Final		
<b>Revenues:</b>				
Other local	\$	\$	\$ 546,942	\$ 546,942
Federal aid, grants and reimbursements			2,000,275	2,000,275
<b>Total revenues</b>			<u>2,547,217</u>	<u>2,547,217</u>
<b>Expenditures:</b>				
Current -				
Operation of non-instructional services	1,922,025	2,958,940	1,287,068	1,671,872
Capital outlay			48,230	(48,230)
<b>Total expenditures</b>	<u>1,922,025</u>	<u>2,958,940</u>	<u>1,335,298</u>	<u>1,623,642</u>
<b>Excess (deficiency) of revenues over expenditures</b>	<u>(1,922,025)</u>	<u>(2,958,940)</u>	<u>1,211,919</u>	<u>4,170,859</u>
<b>Other financing sources (uses):</b>				
Transfers out			(296,166)	(296,166)
<b>Total other financing sources (uses)</b>			<u>(296,166)</u>	<u>(296,166)</u>
<b>Changes in fund balances</b>	<u>(1,922,025)</u>	<u>(2,958,940)</u>	<u>915,753</u>	<u>3,874,693</u>
<b>Fund balances, beginning of year</b>			2,068,765	2,068,765
<b>Fund balances (deficits), end of year</b>	<u>\$ (1,922,025)</u>	<u>\$ (2,958,940)</u>	<u>\$ 2,984,518</u>	<u>\$ 5,943,458</u>

See accompanying notes to this schedule.

**CASA GRANDE UNION HIGH SCHOOL DISTRICT NO. 82**  
**SCHEDULE OF THE PROPORTIONATE SHARE OF THE NET PENSION LIABILITY**  
**ARIZONA STATE RETIREMENT SYSTEM**  
**LAST EIGHT FISCAL YEARS**

	<u>2022</u>	<u>2021</u>	<u>2020</u>	<u>2019</u>
Measurement date	June 30, 2021	June 30, 2020	June 30, 2019	June 30, 2018
District's proportion of the net pension (assets) liability	0.15%	0.16%	0.16%	0.14%
District's proportionate share of the net pension (assets) liability	\$ 20,048,335	\$ 27,065,757	\$ 22,797,308	\$ 19,558,545
District's covered payroll	\$ 17,056,541	\$ 16,882,480	\$ 16,402,844	\$ 13,689,450
District's proportionate share of the net pension (assets) liability as a percentage of its covered payroll	117.54%	160.32%	138.98%	142.87%
Plan fiduciary net position as a percentage of the total pension liability	78.58%	69.33%	73.24%	73.40%

**SCHEDULE OF PENSION CONTRIBUTIONS**  
**ARIZONA STATE RETIREMENT SYSTEM**  
**LAST EIGHT FISCAL YEARS**

	<u>2022</u>	<u>2021</u>	<u>2020</u>	<u>2019</u>
Actuarially determined contribution	\$ 2,197,126	\$ 1,987,087	\$ 1,933,044	\$ 1,833,125
Contributions in relation to the actuarially determined contribution	<u>2,197,126</u>	<u>1,987,087</u>	<u>1,933,044</u>	<u>1,833,125</u>
Contribution deficiency (excess)	<u>\$</u>	<u>\$</u>	<u>\$</u>	<u>\$</u>
District's covered payroll	\$ 18,294,138	\$ 17,056,541	\$ 16,882,480	\$ 16,402,844
Contributions as a percentage of covered payroll	12.01%	11.65%	11.45%	11.18%

NOTE: The pension schedules in the required supplementary information are intended to show information for ten years, and additional information will be displayed as it becomes available.

See accompanying notes to this schedule.

<u>2018</u>	<u>2017</u>	<u>2016</u>	<u>2015</u>
June 30, 2017	June 30, 2016	June 30, 2015	June 30, 2014
0.13%	0.13%	0.14%	0.14%
\$ 19,969,503	\$ 21,761,302	\$ 22,103,935	\$ 21,414,048
\$ 12,507,764	\$ 12,428,276	\$ 13,062,057	\$ 13,013,654
159.66%	175.10%	169.22%	164.55%
69.92%	67.06%	68.35%	69.49%

<u>2018</u>	<u>2017</u>	<u>2016</u>	<u>2015</u>
\$ 1,492,150	\$ 1,348,337	\$ 1,348,468	\$ 1,422,448
<u>1,492,150</u>	<u>1,348,337</u>	<u>1,348,468</u>	<u>1,422,448</u>
<u>\$</u>	<u>\$</u>	<u>\$</u>	<u>\$</u>
\$ 13,689,450	\$ 12,507,764	\$ 12,428,276	\$ 13,062,057
10.90%	10.78%	10.85%	10.89%

**CASA GRANDE UNION HIGH SCHOOL DISTRICT NO. 82  
NOTES TO REQUIRED SUPPLEMENTARY INFORMATION  
JUNE 30, 2022**

**NOTE 1 – BUDGETARY BASIS OF ACCOUNTING**

The District budget is prepared on a basis consistent with accounting principles generally accepted in the United States of America, except for the following items.

- Certain activities reported in the General Fund are budgeted in separate funds in accordance with Arizona Revised Statutes.
- Prepaid items are budgeted in the year prepaid.
- Employee insurance expenditures are budgeted in the year the employee insurance account is funded.

The following schedule reconciles expenditures and fund balances at the end of year:

	<u>Total Expenditures</u>	<u>Fund Balances End of Year</u>
Statement of Revenues, Expenditures and Changes in Fund Balances – Governmental Funds	\$ 30,347,648	\$ 11,880,948
Activity budgeted as special revenue funds	(778,188)	(3,574,690)
Activity budgeted as capital projects funds		(4,530)
Current year prepaid items	436,718	
Prior-year prepaid items	(425,937)	
Employee insurance account	<u>(15,195)</u>	<u>(153,596)</u>
Schedule of Revenues, Expenditures and Changes in Fund Balances – Budget and Actual – General Fund	<u>\$ 29,565,046</u>	<u>\$ 8,148,132</u>

**NOTE 2 – PENSION PLAN SCHEDULES**

**Actuarial Assumptions for Valuations Performed.** The information presented in the required supplementary schedules was determined as part of the actuarial valuations at the dates indicated, which is the most recent actuarial valuation. The actuarial assumptions used are disclosed in the notes to the financial statements.

**Factors that Affect Trends.** The actuarial assumptions used in the June 30, 2020, valuation were based on the results of an actuarial experience study for the five-year period ended June 30, 2020. The purpose of the experience study was to review actual experience in relation to the actuarial assumptions in effect. The ASRS Board adopted the experience study recommended changes which were applied to the June 30, 2020, actuarial valuation. The total liabilities as of June 30, 2021, reflect changes in actuarial assumptions based on the results of an actuarial experience, including decreasing the discount rate from 7.5 percent to 7.0 percent and changing the projected salary increases from 2.7-7.2 percent to 2.9-8.4 percent.

**COMBINING AND INDIVIDUAL FUND  
FINANCIAL STATEMENTS AND SCHEDULES**

(This page intentionally left blank)

**GOVERNMENTAL FUNDS**

**CASA GRANDE UNION HIGH SCHOOL DISTRICT NO. 82**  
**COMBINING BALANCE SHEET - ALL NON-MAJOR GOVERNMENTAL FUNDS - BY FUND TYPE**  
**JUNE 30, 2022**

	<u>Special Revenue</u>	<u>Debt Service</u>	<u>Capital Projects</u>
<b><u>ASSETS</u></b>			
Cash and investments	\$ 2,051,171	\$ 1,150,799	\$ 14,405
Property taxes receivable		80,928	
Accounts receivable	3,888		
Due from governmental entities	<u>1,024,092</u>		<u>6,342</u>
<b>Total assets</b>	<u><u>\$ 3,079,151</u></u>	<u><u>\$ 1,231,727</u></u>	<u><u>\$ 20,747</u></u>
<b><u>LIABILITIES, DEFERRED INFLOWS OF RESOURCES</u></b>			
<b><u>AND FUND BALANCES</u></b>			
Liabilities:			
Accounts payable	\$ 83,445	\$	\$ 6,342
Due to other funds	830,843		
Accrued payroll and employee benefits	17,998		
Unearned revenues	<u>38,560</u>		
<b>Total liabilities</b>	<u>970,846</u>		<u>6,342</u>
Deferred inflows of resources:			
Unavailable revenues - property taxes		51,482	
Unavailable revenues - intergovernmental	<u>372,759</u>		<u>1,827</u>
<b>Total deferred inflows of resources</b>	<u>372,759</u>	<u>51,482</u>	<u>1,827</u>
Fund balances (deficits):			
Restricted	2,089,641	1,180,245	12,578
Unassigned	<u>(354,095)</u>		
<b>Total fund balances</b>	<u>1,735,546</u>	<u>1,180,245</u>	<u>12,578</u>
<b>Total liabilities, deferred inflows of resources</b>			
<b>and fund balances</b>	<u><u>\$ 3,079,151</u></u>	<u><u>\$ 1,231,727</u></u>	<u><u>\$ 20,747</u></u>

Total Non-Major  
Governmental  
Funds

\$ 3,216,375  
80,928  
3,888  
1,030,434  
\$ 4,331,625

\$ 89,787  
830,843  
17,998  
38,560  
977,188

51,482  
374,586  
426,068

3,282,464  
(354,095)  
2,928,369

\$ 4,331,625

**CASA GRANDE UNION HIGH SCHOOL DISTRICT NO. 82  
COMBINING STATEMENT OF REVENUES, EXPENDITURES AND CHANGES IN FUND BALANCES -  
ALL NON-MAJOR GOVERNMENTAL FUNDS - BY FUND TYPE  
YEAR ENDED JUNE 30, 2022**

	<u>Special Revenue</u>	<u>Debt Service</u>	<u>Capital Projects</u>
<b>Revenues:</b>			
Other local	\$ 1,170,392	\$ 7,074	\$ 77
Property taxes		3,040,214	825
State aid and grants	4,222,040		68,855
Federal aid, grants and reimbursements	1,988,399		
<b>Total revenues</b>	<u>7,380,831</u>	<u>3,047,288</u>	<u>69,757</u>
<b>Expenditures:</b>			
Current -			
Instruction	5,192,419		
Support services - students and staff	1,076,966		
Support services - administration	325,996		
Operation and maintenance of plant services	6,263		
Student transportation services	109,441		
Capital outlay	103,856		69,063
Debt service -			
Principal retirement		2,305,000	
Interest and fiscal charges		608,700	
<b>Total expenditures</b>	<u>6,814,941</u>	<u>2,913,700</u>	<u>69,063</u>
<b>Excess (deficiency) of revenues over expenditures</b>	<u>565,890</u>	<u>133,588</u>	<u>694</u>
<b>Other financing sources (uses):</b>			
Transfers in		1,207	
Transfers out	(107,797)	(1,207)	
<b>Total other financing sources (uses)</b>	<u>(107,797)</u>		
<b>Changes in fund balances</b>	<u>458,093</u>	<u>133,588</u>	<u>694</u>
<b>Fund balances, beginning of year</b>	1,277,453	1,046,657	11,884
<b>Fund balances, end of year</b>	<u>\$ 1,735,546</u>	<u>\$ 1,180,245</u>	<u>\$ 12,578</u>

Total Non-Major  
Governmental  
Funds

\$ 1,177,543  
3,041,039  
4,290,895  
1,988,399  
10,497,876

5,192,419  
1,076,966  
325,996  
6,263  
109,441  
172,919

2,305,000  
608,700  
9,797,704

700,172

1,207  
(109,004)  
(107,797)

592,375

2,335,994

\$ 2,928,369

## SPECIAL REVENUE FUNDS

**Classroom Site** - to account for the financial activity for the portion of state sales tax collections and permanent state school fund earnings as approved by the voters in 2000.

**Instructional Improvement** - to account for the activity of monies received from gaming revenue.

**Student Success** - to account for student success monies.

**Title I Grants** - to account for financial assistance received for the purpose of improving the teaching and learning of children failing, or most at-risk of failing, to meet challenging State academic standards.

**Professional Development and Technology Grants** - to account for financial assistance received to increase student academic achievement through improving teacher quality.

**Title IV Grants** - to account for financial assistance received for chemical abuse awareness programs and expanding projects that benefit educational and health needs of the communities.

**Limited English and Immigrant Students** - to account for financial assistance received for educational services and costs for limited English and immigrant children.

**Indian Education** - to account for financial assistance received for Indian education at preschool, elementary, secondary and adult levels.

**Special Education Grants** - to account for supplemental financial assistance received to provide a free, appropriate public education to disabled children.

**Vocational Education** - to account for financial assistance received for preparation of individuals for employment or advancement in a career not requiring a baccalaureate or advanced degree.

**Medicaid Reimbursement** - to account for reimbursements related to specific health services provided to eligible students.

**Taylor Grazing Fees** - to account for financial assistance received for the purpose of protecting public lands by preventing over-grazing and soil deterioration and to provide for orderly use, improvement and development, and stabilization of the livestock industry.

**E-Rate** - to account for monies received to reimburse the District for broadband internet and telecommunications costs.

**Impact Aid** - to account for financial assistance to local educational agencies that are financially burdened by federal activities.

**State Vocational Education** - to account for financial assistance received for the preparation of individuals for employment.

**College Credit Exam Incentives** - to account for financial assistance received for college credit exams.

**Results-based Funding** - to account for financial assistance received for academic performance results in accordance with A.R.S. §15-249.08.

**Other State Projects** - to account for financial assistance received for other State projects.

**School Plant** - to account for proceeds from the sale or lease of school property.

**Civic Center** - to account for monies received from the rental of school facilities for civic activities.

**Community School** - to account for activity related to academic and skill development for all citizens.

**Auxiliary Operations** - to account for activity arising from bookstore, athletic and miscellaneous District related operations and to account for activity related to monies collected in support of extracurricular activities to be taken as a tax credit by the tax payer in accordance with A.R.S. §43-1089.01.

**Extracurricular Activities Fees Tax Credit** - to account for activity related to monies collected in support of extracurricular activities to be taken as a tax credit by the tax payer in accordance with A.R.S. §43-1089.01.

**Gifts and Donations** - to account for activity related to gifts, donations, bequests and private grants made to the District.

**Insurance Proceeds** - to account for the monies received from insurance claims.

**Litigation Recovery** - to account for monies received for and derived from litigation.

**Indirect Costs** - to account for monies received from federal projects for administrative costs.

**Grants and Gifts to Teachers** - to account for grants and gifts under \$1,500 received from private sources that are designated for use by a teacher for instructional purposes.

**Career Technical Education** - to account for monies received from Career Technical Education Districts for vocational education programs.

**Arizona Industry Credentials Incentive** - to account for incentive monies for career technical education courses or programs that provide a certification, credential, or license.

**Student Activities** - to account for monies raised by students to finance student clubs and organizations.

**Intergovernmental Agreements** - to account for the financial activities relating to agreements with other governments not required to be accounted for elsewhere.

**CASA GRANDE UNION HIGH SCHOOL DISTRICT NO. 82**  
**COMBINING BALANCE SHEET - NON-MAJOR SPECIAL REVENUE FUNDS**  
**JUNE 30, 2022**

	Classroom Site	Instructional Improvement	Title I Grants
<b><u>ASSETS</u></b>			
Cash and investments	\$ 349,414	\$ 544,154	\$
Accounts receivable			
Due from governmental entities		75,438	222,755
<b>Total assets</b>	<b>\$ 349,414</b>	<b>\$ 619,592</b>	<b>\$ 222,755</b>
 <b><u>LIABILITIES, DEFERRED INFLOWS OF RESOURCES AND FUND BALANCES</u></b>			
Liabilities:			
Accounts payable	\$	\$	\$ 41,783
Due to other funds			176,172
Accrued payroll and employee benefits	2,577		4,800
Unearned revenues			
<b>Total liabilities</b>	<b>2,577</b>		<b>222,755</b>
Deferred inflows of resources:			
Unavailable revenues - intergovernmental			127,849
Fund balances (deficits):			
Restricted	346,837	619,592	
Unassigned			(127,849)
<b>Total fund balances</b>	<b>346,837</b>	<b>619,592</b>	<b>(127,849)</b>
 <b>Total liabilities, deferred inflows of resources and fund balances</b>	 <b>\$ 349,414</b>	 <b>\$ 619,592</b>	 <b>\$ 222,755</b>

<u>Professional Development and Technology Grants</u>	<u>Title IV Grants</u>	<u>Limited English &amp; Immigrant Students</u>	<u>Indian Education</u>	<u>Special Education Grants</u>	<u>Vocational Education</u>
\$	\$	\$	\$ 36,086	\$	\$
121,692	24,652	85		218,267	44,800
<u>\$ 121,692</u>	<u>\$ 24,652</u>	<u>\$ 85</u>	<u>\$ 36,086</u>	<u>\$ 218,267</u>	<u>\$ 44,800</u>
\$	\$	\$	\$	\$ 24,059	\$ 13,466
115,108	24,652	85		194,208	31,334
6,584			36,086		
<u>121,692</u>	<u>24,652</u>	<u>85</u>	<u>36,086</u>	<u>218,267</u>	<u>44,800</u>
<u>11,318</u>	<u>4,698</u>	<u>85</u>		<u>196,527</u>	<u>9,458</u>
(11,318)	(4,698)	(85)		(196,527)	(9,458)
<u>(11,318)</u>	<u>(4,698)</u>	<u>(85)</u>		<u>(196,527)</u>	<u>(9,458)</u>
<u>\$ 121,692</u>	<u>\$ 24,652</u>	<u>\$ 85</u>	<u>\$ 36,086</u>	<u>\$ 218,267</u>	<u>\$ 44,800</u>

(Continued)

**CASA GRANDE UNION HIGH SCHOOL DISTRICT NO. 82**  
**COMBINING BALANCE SHEET - NON-MAJOR SPECIAL REVENUE FUNDS**  
**JUNE 30, 2022**

	E-Rate	State Vocational Education	College Credit Exam Incentives
<b><u>ASSETS</u></b>			
Cash and investments	\$ 163,320	\$ 2,474	\$ 48,812
Accounts receivable			
Due from governmental entities	22,824		
<b>Total assets</b>	\$ 186,144	\$ 2,474	\$ 48,812
 <b><u>LIABILITIES, DEFERRED INFLOWS OF RESOURCES AND FUND BALANCES</u></b>			
Liabilities:			
Accounts payable	\$	\$	\$
Due to other funds			
Accrued payroll and employee benefits			
Unearned revenues		2,474	
<b>Total liabilities</b>		2,474	
Deferred inflows of resources:			
Unavailable revenues - intergovernmental	22,824		
Fund balances (deficits):			
Restricted	163,320		48,812
Unassigned			
<b>Total fund balances</b>	163,320		48,812
 <b>Total liabilities, deferred inflows of resources and fund balances</b>	\$ 186,144	\$ 2,474	\$ 48,812

<u>Results-based Funding</u>	<u>Other State Projects</u>	<u>Civic Center</u>	<u>Community School</u>	<u>Extracurricular Activities Fees Tax Credit</u>	<u>Grants and Gifts to Teachers</u>
\$ 2,138	\$ 233,027	\$ 143,300 3,888	\$ 36,606	\$ 800	\$ 147
<u>\$ 2,138</u>	<u>\$ 233,027</u>	<u>\$ 147,188</u>	<u>\$ 36,606</u>	<u>\$ 800</u>	<u>\$ 147</u>
\$	\$	\$	\$	\$	\$
_____	_____	_____	_____	_____	_____
_____	_____	_____	_____	_____	_____
_____	_____	_____	_____	_____	_____
2,138	233,027	147,188	36,606	800	147
<u>2,138</u>	<u>233,027</u>	<u>147,188</u>	<u>36,606</u>	<u>800</u>	<u>147</u>
<u>\$ 2,138</u>	<u>\$ 233,027</u>	<u>\$ 147,188</u>	<u>\$ 36,606</u>	<u>\$ 800</u>	<u>\$ 147</u>

(Continued)

**CASA GRANDE UNION HIGH SCHOOL DISTRICT NO. 82**  
**COMBINING BALANCE SHEET - NON-MAJOR SPECIAL REVENUE FUNDS**  
**JUNE 30, 2022**

	Career Technical Education	Arizona Industry Credentials Incentive	Student Activities
<b><u>ASSETS</u></b>			
Cash and investments	\$	\$	\$ 457,386
Accounts receivable			
Due from governmental entities	293,579		
<b>Total assets</b>	<b>\$ 293,579</b>	<b>\$</b>	<b>\$ 457,386</b>
 <b><u>LIABILITIES, DEFERRED INFLOWS OF RESOURCES AND FUND BALANCES</u></b>			
Liabilities:			
Accounts payable	\$ 4,137	\$	\$
Due to other funds	285,124	4,160	
Accrued payroll and employee benefits	4,037		
Unearned revenues			
<b>Total liabilities</b>	<b>293,298</b>	<b>4,160</b>	
Deferred inflows of resources:			
Unavailable revenues - intergovernmental			
Fund balances (deficits):			
Restricted	281		457,386
Unassigned		(4,160)	
<b>Total fund balances</b>	<b>281</b>	<b>(4,160)</b>	<b>457,386</b>
 <b>Total liabilities, deferred inflows of resources and fund balances</b>	<b>\$ 293,579</b>	<b>\$</b>	<b>\$ 457,386</b>

<u>Intergovernmental Agreements</u>	<u>Totals</u>
\$ 33,507	\$ 2,051,171
	3,888
	<u>1,024,092</u>
<u>\$ 33,507</u>	<u>\$ 3,079,151</u>
\$	\$ 83,445
	830,843
	17,998
	<u>38,560</u>
	<u>970,846</u>
	<u>372,759</u>
33,507	2,089,641
	<u>(354,095)</u>
<u>33,507</u>	<u>1,735,546</u>
<u>\$ 33,507</u>	<u>\$ 3,079,151</u>

**CASA GRANDE UNION HIGH SCHOOL DISTRICT NO. 82**  
**COMBINING STATEMENT OF REVENUES, EXPENDITURES AND CHANGES IN FUND BALANCES -**  
**NON-MAJOR SPECIAL REVENUE FUNDS**  
**YEAR ENDED JUNE 30, 2022**

	Classroom Site	Instructional Improvement	Title I Grants
<b>Revenues:</b>			
Other local	\$ 4,895	\$ 2,179	\$
State aid and grants	3,544,851	225,240	
Federal aid, grants and reimbursements			794,229
<b>Total revenues</b>	3,549,746	227,419	794,229
<b>Expenditures:</b>			
Current -			
Instruction	3,386,833	620	362,897
Support services - students and staff		131,345	208,549
Support services - administration			171,673
Operation and maintenance of plant services			4,932
Student transportation services			41,200
Capital outlay			24,748
<b>Total expenditures</b>	3,386,833	131,965	813,999
<b>Excess (deficiency) of revenues over expenditures</b>	162,913	95,454	(19,770)
<b>Other financing sources (uses):</b>			
Transfers out			(58,639)
<b>Total other financing sources (uses)</b>			(58,639)
<b>Changes in fund balances</b>	162,913	95,454	(78,409)
<b>Fund balances (deficits), beginning of year</b>	183,924	524,138	(49,440)
<b>Fund balances (deficits), end of year</b>	\$ 346,837	\$ 619,592	\$ (127,849)

<u>Professional Development and Technology Grants</u>	<u>Title IV Grants</u>	<u>Limited English &amp; Immigrant Students</u>	<u>Indian Education</u>	<u>Special Education Grants</u>	<u>Vocational Education</u>
\$	\$	\$	\$	\$	\$
199,935	75,845	14,042	27,476	436,237	318,637
<u>199,935</u>	<u>75,845</u>	<u>14,042</u>	<u>27,476</u>	<u>436,237</u>	<u>318,637</u>
6,278	12,793	14,042	5,298	307,176	234,978
161,685	4,176		21,299	250,364	42,209
31,241	2,974		70		3,233
	338		809	33,344	
	17,200				40,539
<u>199,204</u>	<u>37,481</u>	<u>14,042</u>	<u>27,476</u>	<u>590,884</u>	<u>320,959</u>
<u>731</u>	<u>38,364</u>			<u>(154,647)</u>	<u>(2,322)</u>
<u>(6,263)</u>	<u>(1,586)</u>			<u>(41,268)</u>	<u>(41)</u>
<u>(6,263)</u>	<u>(1,586)</u>			<u>(41,268)</u>	<u>(41)</u>
<u>(5,532)</u>	<u>36,778</u>			<u>(195,915)</u>	<u>(2,363)</u>
<u>(5,786)</u>	<u>(41,476)</u>	<u>(85)</u>		<u>(612)</u>	<u>(7,095)</u>
<u>\$ (11,318)</u>	<u>\$ (4,698)</u>	<u>\$ (85)</u>	<u>\$</u>	<u>\$ (196,527)</u>	<u>\$ (9,458)</u>

(Continued)

**CASA GRANDE UNION HIGH SCHOOL DISTRICT NO. 82**  
**COMBINING STATEMENT OF REVENUES, EXPENDITURES AND CHANGES IN FUND BALANCES -**  
**NON-MAJOR SPECIAL REVENUE FUNDS**  
**YEAR ENDED JUNE 30, 2022**

	E-Rate	State Vocational Education	College Credit Exam Incentives
<b>Revenues:</b>			
Other local	\$	\$	\$
State aid and grants		80,330	21,147
Federal aid, grants and reimbursements	121,998		
<b>Total revenues</b>	121,998	80,330	21,147
<b>Expenditures:</b>			
Current -			
Instruction		41,584	12,755
Support services - students and staff		33,420	
Support services - administration		1,405	
Operation and maintenance of plant services			
Student transportation services			
Capital outlay		3,921	
<b>Total expenditures</b>		80,330	12,755
<b>Excess (deficiency) of revenues over expenditures</b>	121,998		8,392
<b>Other financing sources (uses):</b>			
Transfers out			
<b>Total other financing sources (uses)</b>			
<b>Changes in fund balances</b>	121,998		8,392
<b>Fund balances (deficits), beginning of year</b>	41,322		40,420
<b>Fund balances, end of year</b>	\$ 163,320	\$	\$ 48,812

<u>Results-based Funding</u>	<u>Other State Projects</u>	<u>Civic Center</u>	<u>Community School</u>	<u>Extracurricular Activities Fees Tax Credit</u>	<u>Grants and Gifts to Teachers</u>
\$	\$	\$	\$	\$	\$
	350,472	27,398	70,514		
	<u>350,472</u>	<u>27,398</u>	<u>70,514</u>		
	128,272		17,851		
	476		360		
		1,331	9,188		
			6,580		
	<u>128,748</u>	<u>1,331</u>	<u>33,979</u>		
	<u>221,724</u>	<u>26,067</u>	<u>36,535</u>		
	<u>221,724</u>	<u>26,067</u>	<u>36,535</u>		
2,138	11,303	121,121	71	800	147
<u>\$ 2,138</u>	<u>\$ 233,027</u>	<u>\$ 147,188</u>	<u>\$ 36,606</u>	<u>\$ 800</u>	<u>\$ 147</u>

(Continued)

**CASA GRANDE UNION HIGH SCHOOL DISTRICT NO. 82**  
**COMBINING STATEMENT OF REVENUES, EXPENDITURES AND CHANGES IN FUND BALANCES -**  
**NON-MAJOR SPECIAL REVENUE FUNDS**  
**YEAR ENDED JUNE 30, 2022**

	Career Technical Education	Arizona Industry Credentials Incentive	Student Activities
<b>Revenues:</b>			
Other local	\$ 566,907	\$ 2,738	\$ 495,261
State aid and grants			
Federal aid, grants and reimbursements			
<b>Total revenues</b>	<u>566,907</u>	<u>2,738</u>	<u>495,261</u>
<b>Expenditures:</b>			
Current -			
Instruction	326,916	1,700	460,698
Support services - students and staff	94,787		
Support services - administration	105,736		
Operation and maintenance of plant services			
Student transportation services	33,750		
Capital outlay	5,987	4,881	
<b>Total expenditures</b>	<u>567,176</u>	<u>6,581</u>	<u>460,698</u>
<b>Excess (deficiency) of revenues over expenditures</b>	<u>(269)</u>	<u>(3,843)</u>	<u>34,563</u>
<b>Other financing sources (uses):</b>			
Transfers out			
<b>Total other financing sources (uses)</b>			
<b>Changes in fund balances</b>	<u>(269)</u>	<u>(3,843)</u>	<u>34,563</u>
<b>Fund balances (deficits), beginning of year</b>	550	(317)	422,823
<b>Fund balances (deficits), end of year</b>	<u>\$ 281</u>	<u>\$ (4,160)</u>	<u>\$ 457,386</u>

<u>Intergovernmental Agreements</u>	<u>Totals</u>
\$ 500	\$ 1,170,392
	4,222,040
	1,988,399
<u>500</u>	<u>7,380,831</u>
	5,192,419
500	1,076,966
	325,996
	6,263
	109,441
	103,856
<u>500</u>	<u>6,814,941</u>
	565,890
	<u>(107,797)</u>
	<u>(107,797)</u>
	458,093
33,507	1,277,453
<u>\$ 33,507</u>	<u>\$ 1,735,546</u>

**CASA GRANDE UNION HIGH SCHOOL DISTRICT NO. 82**  
**COMBINING SCHEDULE OF REVENUES, EXPENDITURES AND CHANGES IN FUND BALANCES -**  
**BUDGET AND ACTUAL**  
**NON-MAJOR SPECIAL REVENUE FUNDS**  
**YEAR ENDED JUNE 30, 2022**

	Classroom Site		Variance - Positive (Negative)
	Budget	Actual	
<b>Revenues:</b>			
Other local	\$	\$ 4,895	\$ 4,895
State aid and grants		3,544,851	3,544,851
Federal aid, grants and reimbursements			
<b>Total revenues</b>		<u>3,549,746</u>	<u>3,549,746</u>
<b>Expenditures:</b>			
Current -			
Instruction	2,557,964	3,386,833	(828,869)
Support services - students and staff	1,111,629		1,111,629
Support services - administration			
Operation and maintenance of plant services			
Student transportation services			
Capital outlay			
<b>Total expenditures</b>	<u>3,669,593</u>	<u>3,386,833</u>	<u>282,760</u>
<b>Excess (deficiency) of revenues over expenditures</b>	<u>(3,669,593)</u>	<u>162,913</u>	<u>3,832,506</u>
<b>Other financing sources (uses):</b>			
Transfers in			
Transfers out			
<b>Total other financing sources (uses)</b>			
<b>Changes in fund balances</b>	<u>(3,669,593)</u>	<u>162,913</u>	<u>3,832,506</u>
<b>Fund balances (deficits), beginning of year</b>		183,924	183,924
<b>Fund balances (deficits), end of year</b>	<u>\$ (3,669,593)</u>	<u>\$ 346,837</u>	<u>\$ 4,016,430</u>

Instructional Improvement			Student Success		
Budget	Actual	Variance - Positive (Negative)	Budget	Non-GAAP Actual	Variance - Positive (Negative)
\$	\$ 2,179	\$ 2,179	\$	\$ 229	\$ 229
	225,240	225,240			
	<u>227,419</u>	<u>227,419</u>		<u>229</u>	<u>229</u>
144,000	620	143,380			
	131,345	(131,345)			
<u>144,000</u>	<u>131,965</u>	<u>12,035</u>			
<u>(144,000)</u>	<u>95,454</u>	<u>239,454</u>		<u>229</u>	<u>229</u>
<u>(144,000)</u>	<u>95,454</u>	<u>239,454</u>		<u>229</u>	<u>229</u>
	524,138	524,138		52,839	52,839
<u>\$ (144,000)</u>	<u>\$ 619,592</u>	<u>\$ 763,592</u>	<u>\$</u>	<u>\$ 53,068</u>	<u>\$ 53,068</u>

(Continued)

**CASA GRANDE UNION HIGH SCHOOL DISTRICT NO. 82**  
**COMBINING SCHEDULE OF REVENUES, EXPENDITURES AND CHANGES IN FUND BALANCES -**  
**BUDGET AND ACTUAL**  
**NON-MAJOR SPECIAL REVENUE FUNDS**  
**YEAR ENDED JUNE 30, 2022**

	Title I Grants		Variance - Positive (Negative)
	Budget	Actual	
<b>Revenues:</b>			
Other local	\$	\$	\$
State aid and grants			
Federal aid, grants and reimbursements		794,229	794,229
<b>Total revenues</b>		<u>794,229</u>	<u>794,229</u>
<b>Expenditures:</b>			
Current -			
Instruction	1,326,223	362,897	963,326
Support services - students and staff		208,549	(208,549)
Support services - administration		171,673	(171,673)
Operation and maintenance of plant services		4,932	(4,932)
Student transportation services		41,200	(41,200)
Capital outlay		24,748	(24,748)
<b>Total expenditures</b>	<u>1,326,223</u>	<u>813,999</u>	<u>512,224</u>
<b>Excess (deficiency) of revenues over expenditures</b>	<u>(1,326,223)</u>	<u>(19,770)</u>	<u>1,306,453</u>
<b>Other financing sources (uses):</b>			
Transfers in			
Transfers out		(58,639)	(58,639)
<b>Total other financing sources (uses)</b>		<u>(58,639)</u>	<u>(58,639)</u>
<b>Changes in fund balances</b>	<u>(1,326,223)</u>	<u>(78,409)</u>	<u>1,247,814</u>
<b>Fund balances (deficits), beginning of year</b>		(49,440)	(49,440)
<b>Fund balances (deficits), end of year</b>	<u>\$ (1,326,223)</u>	<u>\$ (127,849)</u>	<u>\$ 1,198,374</u>

Professional Development and Technology Grants			Title IV Grants		
Budget	Actual	Variance - Positive (Negative)	Budget	Actual	Variance - Positive (Negative)
\$	\$	\$	\$	\$	\$
	199,935	199,935		75,845	75,845
	199,935	199,935		75,845	75,845
	6,278	(6,278)		12,793	(12,793)
243,515	161,685	81,830		4,176	(4,176)
	31,241	(31,241)		2,974	(2,974)
				338	(338)
			63,905	17,200	46,705
243,515	199,204	44,311	63,905	37,481	26,424
(243,515)	731	244,246	(63,905)	38,364	102,269
	(6,263)	(6,263)		(1,586)	(1,586)
	(6,263)	(6,263)		(1,586)	(1,586)
(243,515)	(5,532)	237,983	(63,905)	36,778	100,683
	(5,786)	(5,786)		(41,476)	(41,476)
\$ (243,515)	\$ (11,318)	\$ 232,197	\$ (63,905)	\$ (4,698)	\$ 59,207

(Continued)

**CASA GRANDE UNION HIGH SCHOOL DISTRICT NO. 82**  
**COMBINING SCHEDULE OF REVENUES, EXPENDITURES AND CHANGES IN FUND BALANCES -**  
**BUDGET AND ACTUAL**  
**NON-MAJOR SPECIAL REVENUE FUNDS**  
**YEAR ENDED JUNE 30, 2022**

	Limited English & Immigrant Students		Variance - Positive (Negative)
	Budget	Actual	
<b>Revenues:</b>			
Other local	\$	\$	\$
State aid and grants			
Federal aid, grants and reimbursements		14,042	14,042
<b>Total revenues</b>		14,042	14,042
<b>Expenditures:</b>			
Current -			
Instruction	14,006	14,042	(36)
Support services - students and staff			
Support services - administration			
Operation and maintenance of plant services			
Student transportation services			
Capital outlay			
<b>Total expenditures</b>	14,006	14,042	(36)
<b>Excess (deficiency) of revenues over expenditures</b>	(14,006)		14,006
<b>Other financing sources (uses):</b>			
Transfers in			
Transfers out			
<b>Total other financing sources (uses)</b>			
<b>Changes in fund balances</b>	(14,006)		14,006
<b>Fund balances (deficits), beginning of year</b>		(85)	(85)
<b>Fund balances (deficits), end of year</b>	\$ (14,006)	\$ (85)	\$ 13,921

Indian Education			Special Education Grants		
Budget	Actual	Variance - Positive (Negative)	Budget	Actual	Variance - Positive (Negative)
\$	\$	\$	\$	\$	\$
	27,476	27,476		436,237	436,237
	27,476	27,476		436,237	436,237
230,317	5,298	(5,298)	1,016,748	307,176	709,572
	21,299	209,018		250,364	(250,364)
	70	(70)			
	809	(809)		33,344	(33,344)
230,317	27,476	202,841	1,016,748	590,884	425,864
(230,317)		230,317	(1,016,748)	(154,647)	862,101
				(41,268)	(41,268)
				(41,268)	(41,268)
(230,317)		230,317	(1,016,748)	(195,915)	820,833
				(612)	(612)
\$ (230,317)	\$	\$ 230,317	\$ (1,016,748)	\$ (196,527)	\$ 820,221

(Continued)

**CASA GRANDE UNION HIGH SCHOOL DISTRICT NO. 82**  
**COMBINING SCHEDULE OF REVENUES, EXPENDITURES AND CHANGES IN FUND BALANCES -**  
**BUDGET AND ACTUAL**  
**NON-MAJOR SPECIAL REVENUE FUNDS**  
**YEAR ENDED JUNE 30, 2022**

	Vocational Education		Variance - Positive (Negative)
	Budget	Actual	
<b>Revenues:</b>			
Other local	\$	\$	\$
State aid and grants			
Federal aid, grants and reimbursements		318,637	318,637
<b>Total revenues</b>		318,637	318,637
<b>Expenditures:</b>			
Current -			
Instruction	386,963	234,978	151,985
Support services - students and staff		42,209	(42,209)
Support services - administration		3,233	(3,233)
Operation and maintenance of plant services			
Student transportation services			
Capital outlay		40,539	(40,539)
<b>Total expenditures</b>	386,963	320,959	66,004
<b>Excess (deficiency) of revenues over expenditures</b>	(386,963)	(2,322)	384,641
<b>Other financing sources (uses):</b>			
Transfers in			
Transfers out		(41)	(41)
<b>Total other financing sources (uses)</b>		(41)	(41)
<b>Changes in fund balances</b>	(386,963)	(2,363)	384,600
<b>Fund balances (deficits), beginning of year</b>		(7,095)	(7,095)
<b>Fund balances (deficits), end of year</b>	\$ (386,963)	\$ (9,458)	\$ 377,505

Medicaid Reimbursement			Taylor Grazing Fees		
Budget	Non-GAAP Actual	Variance - Positive (Negative)	Budget	Non-GAAP Actual	Variance - Positive (Negative)
\$	\$ 3,270	\$ 3,270	\$	\$ 1,498	\$ 1,498
	348,947	348,947		1,498	1,498
	<u>352,217</u>	<u>352,217</u>		<u>1,498</u>	<u>1,498</u>
752,515	66,686	685,829		409	(409)
	18,971	(18,971)			
	7,123	(7,123)			
<u>752,515</u>	<u>92,780</u>	<u>659,735</u>		<u>409</u>	<u>(409)</u>
<u>(752,515)</u>	<u>259,437</u>	<u>1,011,952</u>		<u>1,089</u>	<u>1,089</u>
<u>(752,515)</u>	<u>259,437</u>	<u>1,011,952</u>		<u>1,089</u>	<u>1,089</u>
	619,515	619,515		14,130	14,130
<u>\$ (752,515)</u>	<u>\$ 878,952</u>	<u>\$ 1,631,467</u>	<u>\$</u>	<u>\$ 15,219</u>	<u>\$ 15,219</u>

(Continued)

**CASA GRANDE UNION HIGH SCHOOL DISTRICT NO. 82**  
**COMBINING SCHEDULE OF REVENUES, EXPENDITURES AND CHANGES IN FUND BALANCES -**  
**BUDGET AND ACTUAL**  
**NON-MAJOR SPECIAL REVENUE FUNDS**  
**YEAR ENDED JUNE 30, 2022**

	E-Rate		Variance - Positive (Negative)
	Budget	Actual	
<b>Revenues:</b>			
Other local	\$	\$	\$
State aid and grants			
Federal aid, grants and reimbursements		121,998	121,998
<b>Total revenues</b>		<u>121,998</u>	<u>121,998</u>
<b>Expenditures:</b>			
Current -			
Instruction	80,358		80,358
Support services - students and staff			
Support services - administration			
Operation and maintenance of plant services			
Student transportation services			
Capital outlay			
<b>Total expenditures</b>	<u>80,358</u>		<u>80,358</u>
<b>Excess (deficiency) of revenues over expenditures</b>	<u>(80,358)</u>	<u>121,998</u>	<u>202,356</u>
<b>Other financing sources (uses):</b>			
Transfers in			
Transfers out			
<b>Total other financing sources (uses)</b>			
<b>Changes in fund balances</b>	<u>(80,358)</u>	<u>121,998</u>	<u>202,356</u>
<b>Fund balances (deficits), beginning of year</b>		41,322	41,322
<b>Fund balances (deficits), end of year</b>	<u>\$ (80,358)</u>	<u>\$ 163,320</u>	<u>\$ 243,678</u>

Impact Aid			State Vocational Education		
Budget	Non-GAAP Actual	Variance - Positive (Negative)	Budget	Actual	Variance - Positive (Negative)
\$	\$	\$	\$	\$	\$
	178,088	178,088		80,330	80,330
	178,088	178,088		80,330	80,330
618,167	14,155	(14,155)	158,547	41,584	116,963
	41,140	577,027		33,420	(33,420)
				1,405	(1,405)
	3,877	(3,877)		3,921	(3,921)
618,167	59,172	558,995	158,547	80,330	78,217
(618,167)	118,916	737,083	(158,547)		158,547
(618,167)	118,916	737,083	(158,547)		158,547
	563,821	563,821			
\$ (618,167)	\$ 682,737	\$ 1,300,904	\$ (158,547)	\$	\$ 158,547

(Continued)

**CASA GRANDE UNION HIGH SCHOOL DISTRICT NO. 82**  
**COMBINING SCHEDULE OF REVENUES, EXPENDITURES AND CHANGES IN FUND BALANCES -**  
**BUDGET AND ACTUAL**  
**NON-MAJOR SPECIAL REVENUE FUNDS**  
**YEAR ENDED JUNE 30, 2022**

	College Credit Exam Incentives		
	Budget	Actual	Variance - Positive (Negative)
<b>Revenues:</b>			
Other local	\$	\$	\$
State aid and grants		21,147	21,147
Federal aid, grants and reimbursements			
<b>Total revenues</b>	61,570	21,147	21,147
<b>Expenditures:</b>			
Current -			
Instruction	61,570	12,755	48,815
Support services - students and staff			
Support services - administration			
Operation and maintenance of plant services			
Student transportation services			
Capital outlay			
<b>Total expenditures</b>	61,570	12,755	48,815
<b>Excess (deficiency) of revenues over expenditures</b>	(61,570)	8,392	69,962
<b>Other financing sources (uses):</b>			
Transfers in			
Transfers out			
<b>Total other financing sources (uses)</b>			
<b>Changes in fund balances</b>	(61,570)	8,392	69,962
<b>Fund balances (deficits), beginning of year</b>		40,420	40,420
<b>Fund balances (deficits), end of year</b>	\$ (61,570)	\$ 48,812	\$ 110,382

Results-based Funding			Other State Projects		
Budget	Actual	Variance - Positive (Negative)	Budget	Actual	Variance - Positive (Negative)
\$	\$	\$	\$	\$	\$
				350,472	350,472
				350,472	350,472
2,138		2,138	25,000	128,272	(103,272)
				476	(476)
2,138		2,138	25,000	128,748	(103,748)
(2,138)		2,138	(25,000)	221,724	246,724
(2,138)		2,138	(25,000)	221,724	246,724
	2,138	2,138		11,303	11,303
\$ (2,138)	\$ 2,138	\$ 4,276	\$ (25,000)	\$ 233,027	\$ 258,027

(Continued)

**CASA GRANDE UNION HIGH SCHOOL DISTRICT NO. 82**  
**COMBINING SCHEDULE OF REVENUES, EXPENDITURES AND CHANGES IN FUND BALANCES -**  
**BUDGET AND ACTUAL**  
**NON-MAJOR SPECIAL REVENUE FUNDS**  
**YEAR ENDED JUNE 30, 2022**

	School Plant		Variance - Positive (Negative)
	Budget	Non-GAAP Actual	
<b>Revenues:</b>			
Other local	\$	\$ 54,425	\$ 54,425
State aid and grants			
Federal aid, grants and reimbursements			
<b>Total revenues</b>		54,425	54,425
<b>Expenditures:</b>			
Current -			
Instruction			
Support services - students and staff			
Support services - administration			
Operation and maintenance of plant services	148,075		148,075
Student transportation services			
Capital outlay			
<b>Total expenditures</b>	148,075		148,075
<b>Excess (deficiency) of revenues over expenditures</b>	(148,075)	54,425	202,500
<b>Other financing sources (uses):</b>			
Transfers in			
Transfers out			
<b>Total other financing sources (uses)</b>			
<b>Changes in fund balances</b>	(148,075)	54,425	202,500
<b>Fund balances (deficits), beginning of year</b>		110,318	110,318
<b>Fund balances (deficits), end of year</b>	\$ (148,075)	\$ 164,743	\$ 312,818

Civic Center			Community School		
Budget	Actual	Variance - Positive (Negative)	Budget	Actual	Variance - Positive (Negative)
\$	\$ 27,398	\$ 27,398	\$	\$ 70,514	\$ 70,514
	<u>27,398</u>	<u>27,398</u>		<u>70,514</u>	<u>70,514</u>
			12,709	17,851	(5,142)
				360	(360)
139,488	1,331	138,157		9,188	(9,188)
<u>139,488</u>	<u>1,331</u>	<u>138,157</u>		<u>6,580</u>	<u>(6,580)</u>
			<u>12,709</u>	<u>33,979</u>	<u>(21,270)</u>
<u>(139,488)</u>	<u>26,067</u>	<u>165,555</u>	<u>(12,709)</u>	<u>36,535</u>	<u>49,244</u>
<u>(139,488)</u>	<u>26,067</u>	<u>165,555</u>	<u>(12,709)</u>	<u>36,535</u>	<u>49,244</u>
	121,121	121,121		71	71
<u>\$ (139,488)</u>	<u>\$ 147,188</u>	<u>\$ 286,676</u>	<u>\$ (12,709)</u>	<u>\$ 36,606</u>	<u>\$ 49,315</u>

(Continued)

**CASA GRANDE UNION HIGH SCHOOL DISTRICT NO. 82**  
**COMBINING SCHEDULE OF REVENUES, EXPENDITURES AND CHANGES IN FUND BALANCES -**  
**BUDGET AND ACTUAL**  
**NON-MAJOR SPECIAL REVENUE FUNDS**  
**YEAR ENDED JUNE 30, 2022**

	Auxiliary Operations		
	Budget	Non-GAAP Actual	Variance - Positive (Negative)
<b>Revenues:</b>			
Other local	\$	\$ 709,507	\$ 709,507
State aid and grants			
Federal aid, grants and reimbursements			
<b>Total revenues</b>	741,067	571,057	170,010
<b>Expenditures:</b>			
Current -			
Instruction	741,067	571,057	170,010
Support services - students and staff			
Support services - administration			
Operation and maintenance of plant services			
Student transportation services			
Capital outlay			
<b>Total expenditures</b>	741,067	571,057	170,010
<b>Excess (deficiency) of revenues over expenditures</b>	(741,067)	138,450	879,517
<b>Other financing sources (uses):</b>			
Transfers in			
Transfers out			
<b>Total other financing sources (uses)</b>			
<b>Changes in fund balances</b>	(741,067)	138,450	879,517
<b>Fund balances (deficits), beginning of year</b>		661,096	661,096
<b>Fund balances (deficits), end of year</b>	\$ (741,067)	\$ 799,546	\$ 1,540,613

Extracurricular Activities Fees Tax Credit			Gifts and Donations		
Budget	Actual	Variance - Positive (Negative)	Budget	Non-GAAP Actual	Variance - Positive (Negative)
\$	\$	\$	\$	\$ 67,498	\$ 67,498
				67,498	67,498
215,814		215,814	195,604	10,160	(10,160)
				23,141	172,463
				2,920	(2,920)
				450	(450)
<u>215,814</u>		<u>215,814</u>	<u>195,604</u>	<u>36,671</u>	<u>158,933</u>
<u>(215,814)</u>		<u>215,814</u>	<u>(195,604)</u>	<u>30,827</u>	<u>226,431</u>
<u>(215,814)</u>		<u>215,814</u>	<u>(195,604)</u>	<u>30,827</u>	<u>226,431</u>
	800	800		175,053	175,053
<u>\$ (215,814)</u>	<u>\$ 800</u>	<u>\$ 216,614</u>	<u>\$ (195,604)</u>	<u>\$ 205,880</u>	<u>\$ 401,484</u>

(Continued)

**CASA GRANDE UNION HIGH SCHOOL DISTRICT NO. 82**  
**COMBINING SCHEDULE OF REVENUES, EXPENDITURES AND CHANGES IN FUND BALANCES -**  
**BUDGET AND ACTUAL**  
**NON-MAJOR SPECIAL REVENUE FUNDS**  
**YEAR ENDED JUNE 30, 2022**

	Insurance Proceeds		Variance - Positive (Negative)
	Budget	Non-GAAP Actual	
<b>Revenues:</b>			
Other local	\$	\$ 196	\$ 196
State aid and grants			
Federal aid, grants and reimbursements			
<b>Total revenues</b>		196	196
<b>Expenditures:</b>			
Current -			
Instruction	45,129		45,129
Support services - students and staff			
Support services - administration			
Operation and maintenance of plant services			
Student transportation services			
Capital outlay			
<b>Total expenditures</b>	45,129		45,129
<b>Excess (deficiency) of revenues over expenditures</b>	(45,129)	196	45,325
<b>Other financing sources (uses):</b>			
Transfers in			
Transfers out			
<b>Total other financing sources (uses)</b>			
<b>Changes in fund balances</b>	(45,129)	196	45,325
<b>Fund balances (deficits), beginning of year</b>		45,013	45,013
<b>Fund balances (deficits), end of year</b>	\$ (45,129)	\$ 45,209	\$ 90,338

Litigation Recovery			Indirect Costs		
Budget	Non-GAAP Actual	Variance - Positive (Negative)	Budget	Non-GAAP Actual	Variance - Positive (Negative)
\$	\$	\$	\$	\$	\$
6,618		6,618			
			236,153	18,099	218,054
<u>6,618</u>		<u>6,618</u>	<u>236,153</u>	<u>18,099</u>	<u>218,054</u>
<u>(6,618)</u>		<u>6,618</u>	<u>(236,153)</u>	<u>(18,099)</u>	<u>218,054</u>
				480,755	480,755
				<u>480,755</u>	<u>480,755</u>
<u>(6,618)</u>		<u>6,618</u>	<u>(236,153)</u>	<u>462,656</u>	<u>698,809</u>
	22,061	22,061		244,619	244,619
<u>\$ (6,618)</u>	<u>\$ 22,061</u>	<u>\$ 28,679</u>	<u>\$ (236,153)</u>	<u>\$ 707,275</u>	<u>\$ 943,428</u>

(Continued)

**CASA GRANDE UNION HIGH SCHOOL DISTRICT NO. 82  
 COMBINING SCHEDULE OF REVENUES, EXPENDITURES AND CHANGES IN FUND BALANCES -  
 BUDGET AND ACTUAL  
 NON-MAJOR SPECIAL REVENUE FUNDS  
 YEAR ENDED JUNE 30, 2022**

	Grants and Gifts to Teachers		
	Budget	Actual	Variance - Positive (Negative)
<b>Revenues:</b>			
Other local	\$	\$	\$
State aid and grants			
Federal aid, grants and reimbursements			
<b>Total revenues</b>			
<b>Expenditures:</b>			
Current -			
Instruction			
Support services - students and staff			
Support services - administration			
Operation and maintenance of plant services			
Student transportation services			
Capital outlay			
<b>Total expenditures</b>			
<b>Excess (deficiency) of revenues over expenditures</b>			
<b>Other financing sources (uses):</b>			
Transfers in			
Transfers out			
<b>Total other financing sources (uses)</b>			
<b>Changes in fund balances</b>			
<b>Fund balances (deficits), beginning of year</b>		147	147
<b>Fund balances (deficits), end of year</b>	\$	\$ 147	\$ 147

Career Technical Education			Arizona Industry Credentials Incentive		
Budget	Actual	Variance - Positive (Negative)	Budget	Actual	Variance - Positive (Negative)
\$	\$ 566,907	\$ 566,907	\$	\$ 2,738	\$ 2,738
	<u>566,907</u>	<u>566,907</u>		<u>2,738</u>	<u>2,738</u>
622,295	326,916	295,379	39,514	1,700	37,814
	94,787	(94,787)			
	105,736	(105,736)			
	33,750	(33,750)			
	5,987	(5,987)		4,881	(4,881)
<u>622,295</u>	<u>567,176</u>	<u>55,119</u>	<u>39,514</u>	<u>6,581</u>	<u>32,933</u>
<u>(622,295)</u>	<u>(269)</u>	<u>622,026</u>	<u>(39,514)</u>	<u>(3,843)</u>	<u>35,671</u>
<u>(622,295)</u>	<u>(269)</u>	<u>622,026</u>	<u>(39,514)</u>	<u>(3,843)</u>	<u>35,671</u>
	550	550		(317)	(317)
<u>\$ (622,295)</u>	<u>\$ 281</u>	<u>\$ 622,576</u>	<u>\$ (39,514)</u>	<u>\$ (4,160)</u>	<u>\$ 35,354</u>

(Continued)

**CASA GRANDE UNION HIGH SCHOOL DISTRICT NO. 82**  
**COMBINING SCHEDULE OF REVENUES, EXPENDITURES AND CHANGES IN FUND BALANCES -**  
**BUDGET AND ACTUAL**  
**NON-MAJOR SPECIAL REVENUE FUNDS**  
**YEAR ENDED JUNE 30, 2022**

	Student Activities		Variance - Positive (Negative)
	Budget	Actual	
<b>Revenues:</b>			
Other local	\$	\$ 495,261	\$ 495,261
State aid and grants			
Federal aid, grants and reimbursements			
<b>Total revenues</b>	552,512	495,261	495,261
<b>Expenditures:</b>			
Current -			
Instruction	552,512	460,698	91,814
Support services - students and staff			
Support services - administration			
Operation and maintenance of plant services			
Student transportation services			
Capital outlay			
<b>Total expenditures</b>	552,512	460,698	91,814
<b>Excess (deficiency) of revenues over expenditures</b>	(552,512)	34,563	587,075
<b>Other financing sources (uses):</b>			
Transfers in			
Transfers out			
<b>Total other financing sources (uses)</b>			
<b>Changes in fund balances</b>	(552,512)	34,563	587,075
<b>Fund balances (deficits), beginning of year</b>		422,823	422,823
<b>Fund balances (deficits), end of year</b>	\$ (552,512)	\$ 457,386	\$ 1,009,898

Intergovernmental Agreements			Totals		
Budget	Actual	Variance - Positive (Negative)	Budget	Non-GAAP Actual	Variance - Positive (Negative)
\$	\$ 500	\$ 500	\$	\$ 2,007,015	\$ 2,007,015
				4,222,040	4,222,040
				2,515,434	2,515,434
	<u>500</u>	<u>500</u>		<u>8,744,489</u>	<u>8,744,489</u>
			7,984,175	5,773,636	2,210,539
	500	(500)	2,558,580	1,180,948	1,377,632
			854,320	407,535	446,785
			287,563	6,263	281,300
				109,441	(109,441)
			63,905	115,306	(51,401)
	<u>500</u>	<u>(500)</u>	<u>11,748,543</u>	<u>7,593,129</u>	<u>4,155,414</u>
			<u>(11,748,543)</u>	<u>1,151,360</u>	<u>12,899,903</u>
				480,755	480,755
				(107,797)	(107,797)
				<u>372,958</u>	<u>372,958</u>
			<u>(11,748,543)</u>	<u>1,524,318</u>	<u>13,272,861</u>
	33,507	33,507		3,785,918	3,785,918
<u>\$</u>	<u>\$ 33,507</u>	<u>\$ 33,507</u>	<u>\$ (11,748,543)</u>	<u>\$ 5,310,236</u>	<u>\$ 17,058,779</u>

(This page intentionally left blank)

## **DEBT SERVICE FUND**

**Debt Service** - to account for the accumulation of resources for, and the payment of, long-term debt principal, interest and related costs.

**CASA GRANDE UNION HIGH SCHOOL DISTRICT NO. 82**  
**SCHEDULE OF REVENUES, EXPENDITURES AND CHANGES IN FUND BALANCES -**  
**BUDGET AND ACTUAL**  
**NON-MAJOR DEBT SERVICE FUND**  
**YEAR ENDED JUNE 30, 2022**

	Debt Service		Variance - Positive (Negative)
	Budget	Actual	
<b>Revenues:</b>			
Other local	\$	\$ 7,074	\$ 7,074
Property taxes		3,040,214	3,040,214
<b>Total revenues</b>		<u>3,047,288</u>	<u>3,047,288</u>
<b>Expenditures:</b>			
Debt service -			
Principal retirement	2,305,000	2,305,000	
Interest and fiscal charges	515,295	608,700	(93,405)
<b>Total expenditures</b>	<u>2,820,295</u>	<u>2,913,700</u>	<u>(93,405)</u>
<b>Excess (deficiency) of revenues over expenditures</b>	<u>(2,820,295)</u>	<u>133,588</u>	<u>2,953,883</u>
<b>Other financing sources (uses):</b>			
Transfers in		1,207	1,207
Transfers out		(1,207)	(1,207)
<b>Total other financing sources (uses)</b>			
<b>Changes in fund balances</b>	<u>(2,820,295)</u>	<u>133,588</u>	<u>2,953,883</u>
<b>Fund balances, beginning of year</b>		1,046,657	1,046,657
<b>Fund balances (deficits), end of year</b>	<u>\$ (2,820,295)</u>	<u>\$ 1,180,245</u>	<u>\$ 4,000,540</u>

## CAPITAL PROJECTS FUNDS

**Unrestricted Capital Outlay** - to account for transactions relating to the acquisition of capital items.

**Adjacent Ways** - to account for monies received to finance improvements of public ways adjacent to school property.

**Gifts and Donations - Capital** - to account for gifts and donations to be expended for capital acquisitions.

**Building Renewal Grant** - to account for building renewal grant monies requested from the School Facilities Board that are used for infrastructure or for major upgrades, repairs, or renovations to areas, systems, or buildings that will maintain or extend their useful life.

**New School Facilities** - to account for monies received from the School Facilities Board to be used for constructing new school facilities and purchasing land for new school sites.

**CASA GRANDE UNION HIGH SCHOOL DISTRICT NO. 82**  
**COMBINING BALANCE SHEET - NON-MAJOR CAPITAL PROJECTS FUNDS**  
**JUNE 30, 2022**

	Adjacent Ways	Building Renewal Grant	New School Facilities
<b><u>ASSETS</u></b>			
Cash and investments	\$ 7,567	\$ 6,160	\$ 678
Due from governmental entities		6,342	
<b>Total assets</b>	<b>\$ 7,567</b>	<b>\$ 12,502</b>	<b>\$ 678</b>
 <b><u>LIABILITIES, DEFERRED INFLOWS OF RESOURCES</u></b>			
<b><u>AND FUND BALANCES</u></b>			
Liabilities:			
Accounts payable	\$ _____	\$ 6,342	\$ _____
<b>Total liabilities</b>	<b>_____</b>	<b>6,342</b>	<b>_____</b>
Deferred inflows of resources:			
Unavailable revenues - intergovernmental	_____	1,827	_____
Fund balances:			
Restricted	7,567	4,333	678
<b>Total fund balances</b>	<b>7,567</b>	<b>4,333</b>	<b>678</b>
 <b>Total liabilities, deferred inflows of resources and fund balances</b>	<b>\$ 7,567</b>	<b>\$ 12,502</b>	<b>\$ 678</b>

Totals

\$	14,405
	<u>6,342</u>
\$	<u>20,747</u>

\$	<u>6,342</u>
	<u>6,342</u>

1,827

<u>12,578</u>
<u>12,578</u>

\$	<u>20,747</u>
----	---------------

**CASA GRANDE UNION HIGH SCHOOL DISTRICT NO. 82**  
**COMBINING STATEMENT OF REVENUES, EXPENDITURES AND CHANGES IN FUND BALANCES -**  
**NON-MAJOR CAPITAL PROJECTS FUNDS**  
**YEAR ENDED JUNE 30, 2022**

	<u>Adjacent Ways</u>	<u>Building Renewal Grant</u>	<u>New School Facilities</u>
<b>Revenues:</b>			
Other local	\$ 10	\$ 64	\$ 3
Property taxes	825		
State aid and grants		68,855	
<b>Total revenues</b>	<u>835</u>	<u>68,919</u>	<u>3</u>
<b>Expenditures:</b>			
Capital outlay		69,063	
<b>Total expenditures</b>		<u>69,063</u>	
<b>Changes in fund balances</b>	<u>835</u>	<u>(144)</u>	<u>3</u>
<b>Fund balances, beginning of year</b>	6,732	4,477	675
<b>Fund balances, end of year</b>	<u>\$ 7,567</u>	<u>\$ 4,333</u>	<u>\$ 678</u>

Totals

\$ 77  
825  
68,855  
69,757

69,063  
69,063

694

11,884

\$ 12,578

**CASA GRANDE UNION HIGH SCHOOL DISTRICT NO. 82**  
**COMBINING SCHEDULE OF REVENUES, EXPENDITURES AND CHANGES IN FUND BALANCES -**  
**BUDGET AND ACTUAL**  
**ALL CAPITAL PROJECTS FUNDS**  
**YEAR ENDED JUNE 30, 2022**

	Unrestricted Capital Outlay		
	Budget	Actual	Variance - Positive (Negative)
<b>Revenues:</b>			
Other local	\$	\$ 161,352	\$ 161,352
Property taxes		1,532,772	1,532,772
State aid and grants		2,021,642	2,021,642
<b>Total revenues</b>		3,715,766	3,715,766
<b>Expenditures:</b>			
Capital outlay	4,703,848	1,875,140	2,828,708
Debt service -			
Principal retirement	195,310	195,310	
Interest and fiscal charges	19,306	19,306	
<b>Total expenditures</b>	4,918,464	2,089,756	2,828,708
<b>Changes in fund balances</b>	(4,918,464)	1,626,010	6,544,474
<b>Fund balances, beginning of year</b>		4,072,106	4,072,106
<b>Fund balances (deficits), end of year</b>	\$ (4,918,464)	\$ 5,698,116	\$ 10,616,580

Adjacent Ways			Gifts and Donations - Capital		
Budget	Actual	Variance - Positive (Negative)	Budget	Non-GAAP Actual	Variance - Positive (Negative)
\$	\$ 10 825	\$ 10 825	\$	\$	\$
	<u>835</u>	<u>835</u>			
			4,530		4,530
			<u>4,530</u>		<u>4,530</u>
	<u>835</u>	<u>835</u>	<u>(4,530)</u>		<u>4,530</u>
	6,732	6,732		4,530	4,530
<u>\$</u>	<u>\$ 7,567</u>	<u>\$ 7,567</u>	<u>\$ (4,530)</u>	<u>\$ 4,530</u>	<u>\$ 9,060</u>

(Continued)

**CASA GRANDE UNION HIGH SCHOOL DISTRICT NO. 82  
 COMBINING SCHEDULE OF REVENUES, EXPENDITURES AND CHANGES IN FUND BALANCES -  
 BUDGET AND ACTUAL  
 ALL CAPITAL PROJECTS FUNDS  
 YEAR ENDED JUNE 30, 2022**

	Building Renewal Grant		
	Budget	Actual	Variance - Positive (Negative)
<b>Revenues:</b>			
Other local	\$	\$ 64	\$ 64
Property taxes			
State aid and grants		68,855	68,855
<b>Total revenues</b>		68,919	68,919
<b>Expenditures:</b>			
Capital outlay	6,134	69,063	(62,929)
Debt service -			
Principal retirement			
Interest and fiscal charges			
<b>Total expenditures</b>	6,134	69,063	(62,929)
<b>Changes in fund balances</b>	(6,134)	(144)	5,990
<b>Fund balances, beginning of year</b>		4,477	4,477
<b>Fund balances (deficits), end of year</b>	\$ (6,134)	\$ 4,333	\$ 10,467

New School Facilities			Totals		
Budget	Actual	Variance - Positive (Negative)	Budget	Non-GAAP Actual	Variance - Positive (Negative)
\$	\$ 3	\$ 3	\$	\$ 161,429	\$ 161,429
				1,533,597	1,533,597
				2,090,497	2,090,497
	<u>3</u>	<u>3</u>		<u>3,785,523</u>	<u>3,785,523</u>
			4,714,512	1,944,203	2,770,309
			195,310	195,310	
			19,306	19,306	
			<u>4,929,128</u>	<u>2,158,819</u>	<u>2,770,309</u>
	<u>3</u>	<u>3</u>	<u>(4,929,128)</u>	<u>1,626,704</u>	<u>6,555,832</u>
	675	675		4,088,520	4,088,520
<u>\$</u>	<u>\$ 678</u>	<u>\$ 678</u>	<u>\$ (4,929,128)</u>	<u>\$ 5,715,224</u>	<u>\$ 10,644,352</u>

(This page intentionally left blank)

## STATISTICAL SECTION

The statistical section presents financial statement trends as well as detailed financial and operational information not available elsewhere in the report. The statistical section is intended to enhance the reader's understanding of the information presented in the financial statements, notes to the financial statements, and other supplementary information presented in this report. The statistical section is comprised of the five categories of statistical information presented below.

### **Financial Trends**

These schedules contain information on financial trends to help the reader understand how the District's financial position and financial activities have changed over time.

### **Revenue Capacity**

These schedules contain information to help the reader assess the factors affecting the District's ability to generate revenue.

### **Debt Capacity**

These schedules present information to help the reader evaluate the District's current levels of outstanding debt as well as assess the District's ability to make debt payments and/or issue additional debt in the future.

### **Demographic and Economic Information**

These schedules present various demographic and economic indicators to help the reader understand the environment in which the District's financial activities take place and to help make comparisons with other school districts.

### **Operating Information**

These schedules contain information about the District's operations and various resources to help the reader draw conclusions as to how the District's financial information relates to the services provided by the District.

**Note:** For locally assessed property (i.e., excluding mines, utilities, etc.) Proposition 117, approved by voters in 2012, amended the Arizona Constitution to require that all property taxes after fiscal year 2014-15 be based upon property values limited to five percent in annual growth. The aggregate assessed value of all taxable properties within a taxing jurisdiction (i.e., after applying assessment ratios based on the use of a property), including property values with a growth limit, is currently referred to as net limited assessed value and formerly as primary assessed value. In accordance with Proposition 117, this value is used for all taxing purposes beginning fiscal year 2015-16. Aggregate assessed value without a growth limit is currently referred to as net full cash assessed value and formerly as secondary assessed value. This remains the value utilized for determining debt capacity limits.

(This page intentionally left blank)

**CASA GRANDE UNION HIGH SCHOOL DISTRICT NO. 82**  
**NET POSITION BY COMPONENT**  
**LAST TEN FISCAL YEARS**  
**(Accrual basis of accounting)**

	<b>Fiscal Year Ended June 30</b>				
	<b><u>2022</u></b>	<b><u>2021</u></b>	<b><u>2020</u></b>	<b><u>2019</u></b>	<b><u>2018</u></b>
<b>Net Position:</b>					
Net investment in capital assets	\$ 59,615,791	\$ 58,325,521	\$ 57,322,681	\$ 56,992,730	\$ 57,410,271
Restricted	12,270,163	8,849,845	7,594,246	6,548,300	5,953,286
Unrestricted	<u>(10,927,764)</u>	<u>(13,777,478)</u>	<u>(14,538,730)</u>	<u>(13,154,152)</u>	<u>(15,435,368)</u>
Total net position	<u><u>\$ 60,958,190</u></u>	<u><u>\$ 53,397,888</u></u>	<u><u>\$ 50,378,197</u></u>	<u><u>\$ 50,386,878</u></u>	<u><u>\$ 47,928,189</u></u>
	<b><u>2017</u></b>	<b><u>2016</u></b>	<b><u>2015</u></b>	<b><u>2014</u></b>	<b><u>2013</u></b>
<b>Net Position:</b>					
Net investment in capital assets	\$ 56,828,039	\$ 56,537,646	\$ 56,188,021	\$ 56,212,094	\$ 55,214,231
Restricted	4,837,851	2,408,192	2,674,430	3,455,282	2,830,102
Unrestricted	<u>(17,112,895)</u>	<u>(18,843,029)</u>	<u>(21,747,429)</u>	<u>(297,410)</u>	<u>951,886</u>
Total net position	<u><u>\$ 44,552,995</u></u>	<u><u>\$ 40,102,809</u></u>	<u><u>\$ 37,115,022</u></u>	<u><u>\$ 59,369,966</u></u>	<u><u>\$ 58,996,219</u></u>

**Source:** The source of this information is the District's financial records.

**Note:** Negative unrestricted net position was due to the implementation of Governmental Accounting Standards Board (GASB) Statement No. 68 in fiscal year 2014-15.

**CASA GRANDE UNION HIGH SCHOOL DISTRICT NO. 82**  
**EXPENSES, PROGRAM REVENUES, AND NET (EXPENSE)/REVENUE**  
**LAST TEN FISCAL YEARS**  
**(Accrual basis of accounting)**

	<b>Fiscal Year Ended June 30</b>				
	<b>2022</b>	<b>2021</b>	<b>2020</b>	<b>2019</b>	<b>2018</b>
<b>Expenses</b>					
Instruction	\$ 23,104,224	\$ 21,032,818	\$ 20,571,332	\$ 18,030,924	\$ 16,866,004
Support services - students and staff	5,501,758	6,026,944	4,990,143	4,375,805	4,101,346
Support services - administration	5,087,432	3,957,606	4,872,790	3,855,218	3,783,698
Operation and maintenance of plant services	5,474,266	5,667,082	5,688,316	4,756,489	4,636,304
Student transportation services	3,743,110	2,820,423	3,424,052	4,203,797	3,580,922
Operation of non-instructional services	1,572,495	1,485,544	1,546,208	1,480,813	1,366,116
Interest on long-term debt	588,161	661,752	711,916	810,759	880,935
Total expenses	45,071,446	41,652,169	41,804,757	37,513,805	35,215,325
<b>Program Revenues</b>					
Charges for services:					
Instruction	1,633,149	1,100,628	1,327,738	1,289,498	1,462,516
Operation of non-instructional services	536,762	282,451	598,689	605,009	558,122
Other activities	318,838	286,272	362,321	257,155	182,599
Operating grants and contributions	6,545,760	5,317,517	3,406,931	3,285,011	3,610,517
Capital grants and contributions	1,349,958	428,390	185,354	213,583	776,416
Total program revenues	10,384,467	7,415,258	5,881,033	5,650,256	6,590,170
 <b>Net (Expense)/Revenue</b>	 \$ (34,686,979)	 \$ (34,236,911)	 \$ (35,923,724)	 \$ (31,863,549)	 \$ (28,625,155)

(Continued)

**CASA GRANDE UNION HIGH SCHOOL DISTRICT NO. 82**  
**EXPENSES, PROGRAM REVENUES, AND NET (EXPENSE)/REVENUE**  
**LAST TEN FISCAL YEARS**  
**(Accrual basis of accounting)**

	<u>2017</u>	<u>2016</u>	<u>2015</u>	<u>2014</u>	<u>2013</u>
<b>Expenses</b>					
Instruction	\$ 16,137,896	\$ 16,674,465	\$ 18,706,609	\$ 16,211,734	\$ 17,237,427
Support services - students and staff	3,883,529	3,437,742	3,664,461	3,385,488	3,193,571
Support services - administration	3,300,717	2,982,055	2,954,593	3,086,969	3,077,001
Operation and maintenance of plant services	4,071,691	5,003,851	4,486,770	4,313,109	4,251,565
Student transportation services	3,222,091	2,994,794	3,316,840	3,440,871	3,447,428
Operation of non-instructional services	1,536,931	1,490,077	1,646,925	1,749,021	2,419,386
Interest on long-term debt	974,782	1,052,643	928,131	1,362,291	1,413,861
Total expenses	<u>33,127,637</u>	<u>33,635,627</u>	<u>35,704,329</u>	<u>33,549,483</u>	<u>35,040,239</u>
<b>Program Revenues</b>					
Charges for services:					
Instruction	1,338,282	1,190,951	1,357,024	278,744	467,653
Operation of non-instructional services	419,718	522,788	560,602	1,334,338	1,306,631
Other activities	64,648	39,197	85,861	71,166	53
Operating grants and contributions	4,168,172	3,707,217	4,729,270	4,280,702	3,207,739
Capital grants and contributions	1,120,554	274,127	146,919	154,951	858,308
Total program revenues	<u>7,111,374</u>	<u>5,734,280</u>	<u>6,879,676</u>	<u>6,119,901</u>	<u>5,840,384</u>
<b>Net (Expense)/Revenue</b>	<u>\$ (26,016,263)</u>	<u>\$ (27,901,347)</u>	<u>\$ (28,824,653)</u>	<u>\$ (27,429,582)</u>	<u>\$ (29,199,855)</u>

**Source:** The source of this information is the District's financial records.

**(Concluded)**

**CASA GRANDE UNION HIGH SCHOOL DISTRICT NO. 82**  
**GENERAL REVENUES AND TOTAL CHANGES IN NET POSITION**  
**LAST TEN FISCAL YEARS**  
**(Accrual basis of accounting)**

	<b>Fiscal Year Ended June 30</b>				
	<u><b>2022</b></u>	<u><b>2021</b></u>	<u><b>2020</b></u>	<u><b>2019</b></u>	<u><b>2018</b></u>
<b>Net (Expense)/Revenue</b>	\$ (34,686,979)	\$ (34,236,911)	\$ (35,923,724)	\$ (31,863,549)	\$ (28,625,155)
<b>General Revenues:</b>					
Taxes:					
Property taxes, levied for general purposes	14,306,410	13,119,492	12,609,760	12,560,628	12,875,891
Property taxes, levied for debt service	3,037,118	2,921,392	2,873,724	2,942,421	2,863,179
Property taxes, levied for capital outlay	1,541,184	1,099,105	1,029,865	1,042,165	710,334
Investment income	73,444	64,539	206,271	195,554	188,274
Unrestricted county aid	1,157,151	907,666	903,357	934,270	810,657
Unrestricted state aid	21,604,939	18,845,721	17,632,323	16,274,103	14,336,859
Unrestricted federal aid	527,035	391,944	382,182	373,097	212,337
<b>Total general revenues</b>	<u>42,247,281</u>	<u>37,349,859</u>	<u>35,637,482</u>	<u>34,322,238</u>	<u>31,997,531</u>
<b>Changes in Net Position</b>	<u>\$ 7,560,302</u>	<u>\$ 3,112,948</u>	<u>\$ (286,242)</u>	<u>\$ 2,458,689</u>	<u>\$ 3,372,376</u>

(Continued)

**CASA GRANDE UNION HIGH SCHOOL DISTRICT NO. 82  
GENERAL REVENUES AND TOTAL CHANGES IN NET POSITION  
LAST TEN FISCAL YEARS  
(Accrual basis of accounting)**

	<u>2017</u>	<u>2016</u>	<u>2015</u>	<u>2014</u>	<u>2013</u>
<b>Net (Expense)/Revenue</b>	\$ (26,016,263)	\$ (27,901,347)	\$ (28,824,653)	\$ (27,429,582)	\$ (29,199,855)
<b>General Revenues:</b>					
Taxes:					
Property taxes, levied for general purposes	10,276,072	12,011,242	11,630,604	11,293,553	10,542,201
Property taxes, levied for debt service	2,869,017	2,922,882	2,953,378	2,930,459	2,730,200
Property taxes, levied for capital outlay	2,355,359	509,320	287,095	362,395	113,929
Investment income	65,484	25,142	15,764	4,069	6,986
Unrestricted county aid	797,007	802,484	822,484	704,162	628,309
Unrestricted state aid	13,941,224	14,336,648	13,658,619	12,346,020	9,969,902
Unrestricted federal aid	162,286	281,416	321,594	162,671	239,336
<b>Total general revenues</b>	<u>30,466,449</u>	<u>30,889,134</u>	<u>29,689,538</u>	<u>27,803,329</u>	<u>24,230,863</u>
<b>Changes in Net Position</b>	<u>\$ 4,450,186</u>	<u>\$ 2,987,787</u>	<u>\$ 864,885</u>	<u>\$ 373,747</u>	<u>\$ (4,968,992)</u>

**Source:** The source of this information is the District's financial records.

**(Concluded)**

**CASA GRANDE UNION HIGH SCHOOL DISTRICT NO. 82**  
**FUND BALANCES - GOVERNMENTAL FUNDS**  
**LAST TEN FISCAL YEARS**  
**(Modified accrual basis of accounting)**

	<b>Fiscal Year Ended June 30</b>				
	<b><u>2022</u></b>	<b><u>2021</u></b>	<b><u>2020</u></b>	<b><u>2019</u></b>	<b><u>2018</u></b>
General Fund:					
Nonspendable	\$	\$	\$	\$	\$
Unassigned	11,880,948	9,198,945	6,455,849	6,460,967	5,657,521
Total General Fund	\$ 11,880,948	\$ 9,198,945	\$ 6,455,849	\$ 6,460,967	\$ 6,028,318
All Other Governmental Funds:					
Restricted	\$ 12,000,037	\$ 8,604,997	\$ 7,462,276	\$ 6,416,417	\$ 5,733,111
Unassigned	(354,095)	(104,811)	(250,844)	(214,398)	(244,034)
Total all other governmental funds	\$ 11,645,942	\$ 8,500,186	\$ 7,211,432	\$ 6,202,019	\$ 5,489,077

**(Continued)**

**CASA GRANDE UNION HIGH SCHOOL DISTRICT NO. 82**  
**FUND BALANCES - GOVERNMENTAL FUNDS**  
**LAST TEN FISCAL YEARS**  
**(Modified accrual basis of accounting)**

	<u>2017</u>	<u>2016</u>	<u>2015</u>	<u>2014</u>	<u>2013</u>
General Fund:					
Nonspendable	\$ 1,805,900	\$	\$ 8,181	\$ 246,953	\$
Unassigned	4,463,559	5,459,857	3,211,311	1,518,759	1,540,417
Total General Fund	<u>\$ 6,269,459</u>	<u>\$ 5,459,857</u>	<u>\$ 3,219,492</u>	<u>\$ 1,765,712</u>	<u>\$ 1,540,417</u>
All Other Governmental Funds:					
Restricted	\$ 4,656,100	\$ 2,299,878	\$ 2,498,742	\$ 3,274,478	\$ 2,676,023
Unassigned					(69,185)
Total all other governmental funds	<u>\$ 4,656,100</u>	<u>\$ 2,299,878</u>	<u>\$ 2,498,742</u>	<u>\$ 3,274,478</u>	<u>\$ 2,606,838</u>

**Source:** The source of this information is the District's financial records.

**(Concluded)**

**CASA GRANDE UNION HIGH SCHOOL DISTRICT NO. 82**  
**GOVERNMENTAL FUNDS REVENUES**  
**LAST TEN FISCAL YEARS**  
**(Modified accrual basis of accounting)**

	<b>Fiscal Year Ended June 30</b>				
	<u><b>2022</b></u>	<u><b>2021</b></u>	<u><b>2020</b></u>	<u><b>2019</b></u>	<u><b>2018</b></u>
<b>Federal sources:</b>					
Federal grants	\$ 5,389,860	\$ 4,167,193	\$ 2,426,061	\$ 2,637,268	\$ 2,405,439
Impact Aid	178,088	211,122	175,679	199,760	81,630
National School Lunch Program	2,000,275	1,493,075	1,097,292	902,942	955,324
Total federal sources	<u>7,568,223</u>	<u>5,871,390</u>	<u>3,699,032</u>	<u>3,739,970</u>	<u>3,442,393</u>
<b>State sources:</b>					
State equalization assistance	17,834,848	16,606,751	15,394,884	14,081,753	12,304,002
State grants	451,949	199,061	111,228	155,497	186,733
School Facilities Board	68,855	17,194	108,718	59,721	607,435
Other revenues	3,770,091	2,238,970	2,237,439	2,192,350	2,032,857
Total state sources	<u>22,125,743</u>	<u>19,061,976</u>	<u>17,852,269</u>	<u>16,489,321</u>	<u>15,131,027</u>
<b>Local sources:</b>					
Property taxes	18,881,461	17,373,926	16,521,327	16,446,477	16,448,997
County aid	1,157,151	907,666	903,357	934,270	810,657
Food service sales	536,762	282,451	598,689	605,009	558,100
Investment income	73,444	64,539	206,271	195,554	188,274
Other revenues	2,019,485	1,414,391	1,704,670	1,574,821	1,659,819
Total local sources	<u>22,668,303</u>	<u>20,042,973</u>	<u>19,934,314</u>	<u>19,756,131</u>	<u>19,665,847</u>
<b>Total revenues</b>	<u><u>\$ 52,362,269</u></u>	<u><u>\$ 44,976,339</u></u>	<u><u>\$ 41,485,615</u></u>	<u><u>\$ 39,985,422</u></u>	<u><u>\$ 38,239,267</u></u>

**(Continued)**

**CASA GRANDE UNION HIGH SCHOOL DISTRICT NO. 82**  
**GOVERNMENTAL FUNDS REVENUES**  
**LAST TEN FISCAL YEARS**  
**(Modified accrual basis of accounting)**

	<u>2017</u>	<u>2016</u>	<u>2015</u>	<u>2014</u>	<u>2013</u>
<b>Federal sources:</b>					
Federal grants	\$ 3,167,084	\$ 2,965,755	\$ 3,977,639	\$ 3,381,593	\$ 2,726,834
Impact Aid		129,617	163,123	118,392	159,274
National School Lunch Program	1,099,253	922,901	926,091	948,489	845,514
Total federal sources	<u>4,266,337</u>	<u>4,018,273</u>	<u>5,066,853</u>	<u>4,448,474</u>	<u>3,731,622</u>
<b>State sources:</b>					
State equalization assistance	10,485,752	12,517,162	11,966,582	10,556,987	8,804,434
State grants	95,356	110,387	127,354	122,177	65,825
School Facilities Board	1,063,428	171,517	81,285	256,882	627,934
Other revenues	3,455,472	1,819,487	1,610,752	1,532,151	1,165,468
Total state sources	<u>15,100,008</u>	<u>14,618,553</u>	<u>13,785,973</u>	<u>12,468,197</u>	<u>10,663,661</u>
<b>Local sources:</b>					
Property taxes	15,561,953	15,457,581	15,013,391	14,591,248	13,715,498
County aid	797,007	802,484	822,484	704,162	628,309
Food service sales	419,660	522,788	560,602	618,414	629,000
Investment income	65,484	25,142	15,764	4,069	6,986
Other revenues	1,448,406	1,254,515	1,446,461	1,065,834	1,145,337
Total local sources	<u>18,292,510</u>	<u>18,062,510</u>	<u>17,858,702</u>	<u>16,983,727</u>	<u>16,125,130</u>
<b>Total revenues</b>	<u>\$ 37,658,855</u>	<u>\$ 36,699,336</u>	<u>\$ 36,711,528</u>	<u>\$ 33,900,398</u>	<u>\$ 30,520,413</u>

**Source:** The source of this information is the District's financial records.

**(Concluded)**

**CASA GRANDE UNION HIGH SCHOOL DISTRICT NO. 82**  
**GOVERNMENTAL FUNDS EXPENDITURES AND DEBT SERVICE RATIO**  
**LAST TEN FISCAL YEARS**  
**(Modified accrual basis of accounting)**

	<b>Fiscal Year Ended June 30</b>				
	<u>2022</u>	<u>2021</u>	<u>2020</u>	<u>2019</u>	<u>2018</u>
<b>Expenditures:</b>					
Current -					
Instruction	\$ 20,282,395	\$ 17,422,252	\$ 17,149,598	\$ 16,030,223	\$ 14,500,410
Support services - students and staff	5,349,262	5,501,697	4,550,878	4,460,821	3,890,811
Support services - administration	4,603,726	3,328,928	4,320,619	3,578,578	3,559,753
Operation and maintenance of plant services	4,925,636	5,047,245	5,024,072	4,077,314	4,459,196
Student transportation services	3,350,054	2,514,650	3,108,023	3,793,624	3,397,083
Operation of non-instructional services	1,592,687	1,375,111	1,439,135	1,389,881	1,312,489
Capital outlay	3,302,434	2,496,730	1,992,273	1,977,105	1,892,801
Debt service -					
Interest and fiscal charges	628,006	701,597	751,761	850,604	920,780
Principal retirement	2,500,310	2,463,787	2,422,522	2,316,429	2,294,794
Bond issuance costs					
<b>Total expenditures</b>	<u>\$ 46,534,510</u>	<u>\$ 40,851,997</u>	<u>\$ 40,758,881</u>	<u>\$ 38,474,579</u>	<u>\$ 36,228,117</u>
Expenditures for capitalized assets	\$ 1,479,542	\$ 1,135,522	\$ 562,906	\$ 272,364	\$ 1,186,634
Debt service as a percentage of noncapital expenditures	7%	8%	8%	8%	9%

**CASA GRANDE UNION HIGH SCHOOL DISTRICT NO. 82**  
**GOVERNMENTAL FUNDS EXPENDITURES AND DEBT SERVICE RATIO**  
**LAST TEN FISCAL YEARS**  
**(Modified accrual basis of accounting)**

	<u>2017</u>	<u>2016</u>	<u>2015</u>	<u>2014</u>	<u>2013</u>
<b>Expenditures:</b>					
Current -					
Instruction	\$ 14,891,324	\$ 13,695,473	\$ 15,483,266	\$ 13,794,511	\$ 13,199,423
Support services - students and staff	4,083,163	3,143,873	3,364,062	3,129,692	2,679,392
Support services - administration	3,427,851	2,803,073	2,811,165	2,913,062	2,709,221
Operation and maintenance of plant services	3,955,487	4,685,348	3,977,269	4,237,984	3,856,956
Student transportation services	3,077,737	2,756,629	3,118,524	3,285,323	3,075,197
Operation of non-instructional services	1,506,998	1,422,217	1,588,483	1,694,794	2,326,412
Capital outlay	2,438,101	3,007,928	2,328,853	993,688	3,364,930
Debt service -					
Interest and fiscal charges	1,014,627	1,092,488	967,976	1,362,291	1,413,861
Principal retirement	2,128,234	2,042,625	2,222,773	1,843,071	1,654,957
Bond issuance costs			330,785		
<b>Total expenditures</b>	<u>\$ 36,523,522</u>	<u>\$ 34,649,654</u>	<u>\$ 36,193,156</u>	<u>\$ 33,254,416</u>	<u>\$ 34,280,349</u>
Expenditures for capitalized assets	\$ 1,433,744	\$ 912,065	\$ 857,690	\$ 121,050	\$ 191,906
Debt service as a percentage of noncapital expenditures	9%	9%	9%	10%	9%

**Source:** The source of this information is the District's financial records.

**CASA GRANDE UNION HIGH SCHOOL DISTRICT NO. 82**  
**OTHER FINANCING SOURCES AND USES AND NET CHANGES IN FUND BALANCES - GOVERNMENTAL FUNDS**  
**LAST TEN FISCAL YEARS**  
**(Modified accrual basis of accounting)**

	<b>Fiscal Year Ended June 30</b>				
	<b><u>2022</u></b>	<b><u>2021</u></b>	<b><u>2020</u></b>	<b><u>2019</u></b>	<b><u>2018</u></b>
<b>Excess (deficiency) of revenues over expenditures</b>	\$ 5,827,759	\$ 4,124,342	\$ 726,734	\$ 1,510,843	\$ 2,011,150
<b>Other financing sources (uses):</b>					
Capital lease agreements					
Transfers in	481,962	78,731		273,380	35,533
Transfers out	(481,962)	(78,731)		(273,380)	(35,533)
Insurance recoveries		765		5,545	15,789
Total other financing sources (uses)	765	765		5,545	15,789
<b>Changes in fund balances</b>	\$ 5,827,759	\$ 4,125,107	\$ 726,734	\$ 1,516,388	\$ 2,026,939
	<b><u>2017</u></b>	<b><u>2016</u></b>	<b><u>2015</u></b>	<b><u>2014</u></b>	<b><u>2013</u></b>
<b>Excess (deficiency) of revenues over expenditures</b>	\$ 1,135,333	\$ 2,049,682	\$ 518,372	\$ 645,982	\$ (3,759,936)
<b>Other financing sources (uses):</b>					
Refunding bonds issued			19,985,000		
Premium on sale of bonds			2,650,175		
Capital lease agreements	224,591				2,209,887
Transfers in	82,201	2,350,707	122,373	389,793	107,649
Transfers out	(82,201)	(2,350,707)	(122,373)	(389,793)	(107,649)
Payment to refunded bond escrow agent			(22,236,731)		
Total other financing sources (uses)	224,591		398,444		2,209,887
<b>Changes in fund balances</b>	\$ 1,359,924	\$ 2,049,682	\$ 916,816	\$ 645,982	\$ (1,550,049)

**Source:** The source of this information is the District's financial records.

**CASA GRANDE UNION HIGH SCHOOL DISTRICT NO. 82**  
**NET LIMITED ASSESSED VALUE AND FULL CASH VALUE OF TAXABLE PROPERTY BY CLASS**  
**LAST TEN FISCAL YEARS**

<u>Class</u>	<u>Fiscal Year</u>				
	<u>2022</u>	<u>2021</u>	<u>2020</u>	<u>2019</u>	<u>2018</u>
Commercial, Industrial, Utilities and Mining	\$ 229,096,206	\$ 226,347,892	\$ 224,745,404	\$ 210,100,637	\$ 207,921,435
Agricultural and Vacant	74,797,911	75,263,430	74,465,744	71,110,584	70,235,114
Residential (Owner Occupied)	197,542,256	179,222,252	162,987,470	151,668,555	144,606,859
Residential (Rental)	118,398,073	112,666,247	107,099,382	102,325,638	97,083,267
Railroad, Private Cars and Airlines	4,902,819	3,971,393	4,342,659	4,696,703	4,613,030
Historical Property	8,130,531	6,973,351	7,253,311	6,852,573	6,948,292
Certain Government Property Improvements	5,181	5,055	3,210	46,667	47,339
Total	<u>\$ 632,872,977</u>	<u>\$ 604,449,620</u>	<u>\$ 580,897,180</u>	<u>\$ 546,801,357</u>	<u>\$ 531,455,336</u>
Gross Full Cash Value	\$ 6,846,402,986	\$ 6,291,499,732	\$ 5,944,025,761	\$ 5,518,832,601	\$ 5,403,488,547
Ratio of Net Limited Assessed Value to Gross Full Cash Value	9%	10%	10%	10%	10%
Total Direct Rate	2.97	2.99	3.02	3.08	3.18

<u>Class</u>	<u>Fiscal Year</u>				
	<u>2017</u>	<u>2016</u>	<u>2015</u>	<u>2014</u>	<u>2013</u>
Commercial, Industrial, Utilities and Mining	\$ 208,637,578	\$ 205,143,926	\$ 203,927,144	\$ 208,219,906	\$ 214,395,192
Agricultural and Vacant	71,660,280	78,330,303	77,692,036	81,679,202	102,808,128
Residential (Owner Occupied)	146,821,686	141,675,931	152,523,688	159,576,988	192,551,479
Residential (Rental)	82,243,031	77,628,209	56,754,252	47,269,087	41,432,789
Railroad, Private Cars and Airlines	3,898,074	3,890,344	3,974,860	2,882,253	1,609,120
Historical Property	4,629,970	5,911,263	5,478,876	5,010,947	4,480,910
Certain Government Property Improvements	43,545	40,921	39,042	86,754	1,798
Total	<u>\$ 517,934,164</u>	<u>\$ 512,620,897</u>	<u>\$ 500,389,898</u>	<u>\$ 504,725,137</u>	<u>\$ 557,279,416</u>
Gross Full Cash Value	\$ 5,213,152,054	\$ 4,974,181,929	\$ 4,203,901,140	\$ 4,158,822,268	\$ 4,583,570,382
Ratio of Net Limited Assessed Value to Gross Full Cash Value	10%	10%	12%	12%	12%
Total Direct Rate	3.15	3.15	3.05	3.05	2.53

**Source:** The source of this information is the State and County Abstract of the Assessment Roll, Arizona Department of Revenue.

**Note:** On November 6, 2012, voters approved Proposition 117, an amendment to the Arizona Constitution. Beginning with Tax Year 2015 (Fiscal Year 2016), both primary and secondary taxes are levied against the net limited assessed value. Primary taxes are used for general District operations. Secondary taxes are used to service District bonded debt requirements and other voter-approved overrides.

**CASA GRANDE UNION HIGH SCHOOL DISTRICT NO. 82**  
**NET FULL CASH ASSESSED VALUE OF TAXABLE PROPERTY BY CLASS**  
**LAST TEN FISCAL YEARS**

<u>Class</u>	<u>Fiscal Year</u>				
	<u>2022</u>	<u>2021</u>	<u>2020</u>	<u>2019</u>	<u>2018</u>
Commercial, Industrial, Utilities and Mining	\$ 245,597,172	\$ 244,158,818	\$ 244,108,481	\$ 223,213,482	\$ 221,437,010
Agricultural and Vacant	103,796,550	108,981,723	104,907,304	95,465,110	88,878,973
Residential (Owner Occupied)	247,628,534	215,868,487	194,533,275	180,485,097	178,953,151
Residential (Rental)	147,047,003	136,387,851	128,418,036	120,579,186	117,016,393
Railroad, Private Cars and Airlines	6,243,475	4,931,170	5,279,913	5,581,192	5,302,370
Historical Property	8,536,897	7,364,966	7,799,332	7,440,561	7,793,494
Certain Government Property Improvements	6,373	6,352	3,856	47,039	47,820
<b>Total</b>	<b>\$ 758,856,004</b>	<b>\$ 717,699,367</b>	<b>\$ 685,050,197</b>	<b>\$ 632,811,667</b>	<b>\$ 619,429,211</b>
Gross Full Cash Value	\$ 6,846,402,986	\$ 6,291,499,732	\$ 5,944,025,761	\$ 5,518,832,601	\$ 5,403,488,547
Ratio of Net Full Cash Assessed Value to Gross Full Cash Value	11%	11%	12%	11%	11%
Estimated Net Full Cash Value	6,079,465,762	5,683,719,451	5,387,251,608	4,994,205,350	4,896,198,986
Total Direct Rate	2.97	2.99	3.02	3.08	3.18

<u>Class</u>	<u>Fiscal Year</u>				
	<u>2017</u>	<u>2016</u>	<u>2015</u>	<u>2014</u>	<u>2013</u>
Commercial, Industrial, Utilities and Mining	\$ 222,394,498	\$ 213,642,739	\$ 208,017,794	\$ 210,378,768	\$ 216,047,949
Agricultural and Vacant	83,538,154	85,630,779	79,325,135	83,141,487	106,337,233
Residential (Owner Occupied)	185,837,552	178,095,994	152,935,319	159,721,328	192,729,858
Residential (Rental)	101,417,158	96,493,699	57,045,576	47,357,244	41,504,057
Railroad, Private Cars and Airlines	4,139,628	3,954,129	4,005,345	2,904,242	1,633,053
Historical Property	5,454,013	12,156,049	11,210,831	8,998,622	7,091,214
Certain Government Property Improvements	44,183	43,105	39,042	88,205	1,798
<b>Total</b>	<b>\$ 602,825,186</b>	<b>\$ 590,016,494</b>	<b>\$ 512,579,042</b>	<b>\$ 512,589,896</b>	<b>\$ 565,345,162</b>
Gross Full Cash Value	\$ 5,213,152,054	\$ 4,974,181,929	\$ 4,203,901,140	\$ 4,158,822,268	\$ 4,583,570,382
Ratio of Net Full Cash Assessed Value to Gross Full Cash Value	12%	12%	12%	12%	12%
Estimated Net Full Cash Value	4,735,938,352	4,529,575,475	3,779,817,023	3,729,717,293	4,078,423,857
Total Direct Rate	3.15	3.15	3.05	3.05	2.53

**Source:** The source of this information is the State and County Abstract of the Assessment Roll, Arizona Department of Revenue.

**Note:** On November 6, 2012, voters approved Proposition 117, an amendment to the Arizona Constitution. Beginning with Tax Year 2015 (Fiscal Year 2016), both primary and secondary taxes are levied against the net limited assessed value. The net full cash assessed value is used for determining the District's bonding capacity and as the ceiling for net limited assessed value.

**CASA GRANDE UNION HIGH SCHOOL DISTRICT NO. 82  
PROPERTY TAX ASSESSMENT RATIOS  
LAST TEN FISCAL YEARS**

<u>Class</u>	<u>Fiscal Year</u>				
	<u>2022</u>	<u>2021</u>	<u>2020</u>	<u>2019</u>	<u>2018</u>
Commercial, Industrial, Utilities and Mining	18 %	18 %	18 %	18 %	18 %
Agricultural and Vacant	15	15	15	15	15
Residential (Owner Occupied)	10	10	10	10	10
Residential (Rental)	10	10	10	10	10
Railroad, Private Cars and Airlines	15	15	15	14	15

<u>Class</u>	<u>Fiscal Year</u>				
	<u>2017</u>	<u>2016</u>	<u>2015</u>	<u>2014</u>	<u>2013</u>
Commercial, Industrial, Utilities and Mining	18 %	19 %	19 %	20 %	20 %
Agricultural and Vacant	15	16	16	16	16
Residential (Owner Occupied)	10	10	10	10	10
Residential (Rental)	10	10	10	10	10
Railroad, Private Cars and Airlines	14	15	16	15	15

**Source:** The source of this information is the State and County Abstract of the Assessment Roll, Arizona Department of Revenue.

**Note:** Additional classes of property exist, but do not amount to a significant portion of the District's total valuation, therefore they are not included on this schedule.

**CASA GRANDE UNION HIGH SCHOOL DISTRICT NO. 82  
DIRECT AND OVERLAPPING PROPERTY TAX RATES  
LAST TEN FISCAL YEARS**

Fiscal Year Ended June 30	Overlapping Rates										District Direct Rates		
	State Equalization	County	Community College District	Casa Grande Elementary School District	Stanfield Elementary School District	Toltec Elementary School District	Central Arizona Valley Institute of Technology	City of Casa Grande	City of Eloy	Other	Primary	Secondary	Total
2022	0.43	3.69	2.15	3.47	3.19	2.58	0.05	1.59	1.06	0.04-35.00	2.14	0.83	2.97
2021	0.44	3.75	2.30	3.41	3.10	2.56	0.05	1.34	1.06	0.04-35.00	2.09	0.90	2.99
2020	0.46	3.79	2.21	3.41	3.20	2.63	0.05	1.34	1.09	0.04-35.00	2.11	0.91	3.02
2019	0.47	3.83	2.36	3.49	3.31	2.83	0.05	1.59	1.12	0.04-35.00	2.14	0.94	3.08
2018	0.49	3.87	2.54	3.51	3.59	2.95	0.05	1.60	1.20	0.04-35.00	2.24	0.94	3.18
2017	0.50	3.87	2.63	3.60	2.85	3.76	0.05	1.63	1.23	0.04-35.00	2.63	0.52	3.15
2016	0.51	4.00	2.65	3.54	2.83	3.76	0.05	1.63	1.17	0.04-35.00	2.61	0.54	3.15
2015	0.51	3.80	2.26	3.60	2.24	3.76	0.05	1.63	1.15	0.04-35.00	2.50	0.55	3.05
2014	0.51	3.80	2.25	3.82	2.78	3.76	0.05	1.63	1.14	0.04-35.01	2.50	0.55	3.05
2013	0.47	3.80	1.88	3.47	2.83	2.93	0.05	1.58	1.04	0.04-35.00	2.05	0.48	2.53

**Source:** The source of this information is the Property Tax Rates and Assessed Values, Arizona Tax Research Foundation.

**CASA GRANDE UNION HIGH SCHOOL DISTRICT NO. 82  
PRINCIPAL PROPERTY TAXPAYERS  
CURRENT FISCAL YEAR AND FISCAL YEAR NINE YEARS PRIOR**

<b>Taxpayer</b>	<b>2022</b>		<b>2013</b>	
	<b>Net Limited Assessed Valuation</b>	<b>Percentage of District's Net Limited Assessed Valuation</b>	<b>Net Full Cash Assessed Valuation</b>	<b>Percentage of District's Net Full Cash Assessed Valuation</b>
Arizona Public Service	\$ 24,021,713	3.80 %	\$ 15,096,075	2.67 %
Southwest Gas Corporation	9,077,790	1.43	4,287,933	0.76
El Paso Natural Gas Co	8,263,556	1.31		
Wal-Mart Stores Inc.	7,557,928	1.19	9,457,042	1.67
Arizona Water Company	7,084,394	1.12	4,536,135	0.80
Frito Lay Sales Inc	5,635,866	0.89	6,575,278	1.16
Ehrmann Arizona Dairy	4,959,536	0.78		
Union Pacific Railroad	4,904,561	0.77		
Hexcel Corporation	4,673,544	0.74	2,809,400	0.50
Abbott Manufacturing Inc.	657,204	0.10	4,023,899	0.71
WP Casa Grande Retail LLC			10,708,206	1.89
Daisy Brand LLC			7,359,700	1.30
CG Hanna LLC			2,942,354	0.52
Total	<u>\$ 76,836,092</u>	<u>12.13 %</u>	<u>\$ 67,796,022</u>	<u>11.98 %</u>

**Source:** The source of this information is Pinal County and the Pinal County Assessor's records.

**Note:** On November 6, 2012, voters approved Proposition 117, an amendment to the Arizona Constitution. Beginning with Tax Year 2015 (Fiscal Year 2016), both primary and secondary taxes are levied against the net limited assessed value.

**CASA GRANDE UNION HIGH SCHOOL DISTRICT NO. 82  
PROPERTY TAX LEVIES AND COLLECTIONS  
LAST TEN FISCAL YEARS**

<b>Fiscal Year Ended June 30</b>	<b>Taxes Levied for the Fiscal Year</b>	<b>Collected within the Fiscal Year of the Levy</b>		<b>Collections in Subsequent Fiscal Years</b>	<b>Collected to the End of the Current Fiscal Year</b>	
		<b>Amount</b>	<b>Percentage of Levy</b>		<b>Amount</b>	<b>Percentage of Levy</b>
2022	\$ 15,515,129	\$ 15,179,072	97.83 %	\$	\$ 15,179,072	97.83 %
2021	14,789,803	14,464,841	97.80	318,871	14,783,712	99.96
2020	14,145,842	13,796,018	97.53	344,478	14,140,496	99.96
2019	13,735,587	13,232,573	96.34	497,926	13,730,499	99.96
2018	13,757,933	13,412,067	97.49	342,443	13,754,510	99.98
2017	12,996,212	12,591,230	96.88	401,547	12,992,777	99.97
2016	12,992,824	12,572,722	96.77	415,864	12,988,586	99.97
2015	12,347,712	11,921,750	96.55	421,987	12,343,737	99.97
2014	12,367,837	11,896,447	96.19	467,694	12,364,141	99.97
2013	11,355,590	10,842,170	95.48	509,400	11,351,570	99.96

**Source:** The source of this information is the 2022 Pinal County Treasurer's records.

**Notes:** 1) Amounts collected are on a cash basis.

2) Unsecured personal property taxes are not included in this schedule because the dates of the monthly rolls vary each year. On the average, 90% of unsecured property taxes are collected within 90 days after the due date.

**CASA GRANDE UNION HIGH SCHOOL DISTRICT NO. 82  
OUTSTANDING DEBT BY TYPE  
LAST TEN FISCAL YEARS**

Fiscal Year Ended June 30	General Obligation Bonds					Total Outstanding Debt				
	General Obligation Bonds	Less: Amounts Restricted for Principal	Total	Percentage of Estimated Actual Value (Full Cash Value)	Per Capita	Financed Purchases and Leases	Total	Percentage of Estimated Actual Value (Full Cash Value)	Per Capita	Percentage of Personal Income
2022	\$ 10,860,031	\$ 1,231,727	9,628,304	0.14 %	\$ 121	\$ 616,273	\$ 11,476,304	0.17 %	\$ 145	0.06 %
2021	13,430,049	1,101,235	12,328,814	0.20	230	811,583	14,241,632	0.23	265	0.08
2020	15,925,067	1,079,288	14,845,779	0.25	253	1,045,370	16,970,437	0.29	289	0.11
2019	18,385,085	1,096,445	17,288,640	0.31	248	1,272,892	19,657,977	0.36	283	0.14
2018	20,745,103	1,035,872	19,709,231	0.36	278	1,494,321	22,239,424	0.41	313	0.18
2017	23,045,121	984,954	22,060,167	0.42	314	1,754,115	24,799,236	0.48	353	0.21
2016	25,250,139	1,016,444	24,233,695	0.49	354	1,717,758	26,967,897	0.54	394	0.24
2015	27,380,157	995,012	26,385,145	0.63	391	1,895,383	29,275,540	0.70	434	0.28
2014	27,045,000	937,661	26,107,339	0.63	390	2,068,156	29,113,156	0.70	435	0.29
2013	30,330,000	1,161,622	29,168,378	0.64	439	2,236,227	32,566,227	0.71	490	0.34

**Source:** The source of this information is the District's financial records.

**Note:** The provisions of the Governmental Accounting Standards Board (GASB) Statement No. 87 were adopted in fiscal year 2022. The standard replaces the previous capital and operating lease designations with financed purchases or leases depending on the substance of the transactions. The fiscal year 2013-2021 information within this column relates to the transactions previously designated as capital leases.

**CASA GRANDE UNION HIGH SCHOOL DISTRICT NO. 82  
DIRECT AND OVERLAPPING GOVERNMENTAL ACTIVITIES DEBT  
JUNE 30, 2022**

<u>Governmental Unit</u>	<u>Debt Outstanding</u>	<u>Estimated Percentage Applicable to School District</u>	<u>Estimated Amount Applicable to School District</u>
Overlapping:			
Pinal County Community College District	\$ 81,752,650	25.13 %	\$ 20,544,441
Villago Community Facilities District	4,430,000	100.00	4,430,000
City of Casa Grande	28,795,000	100.00	28,795,000
Casa Grande Elementary School District No. 4	33,173,823	100.00	33,173,823
Toltec Elementary School District No. 22	1,025,577	100.00	1,025,577
Subtotal, Overlapping Debt			<u>87,968,841</u>
Direct:			
Casa Grande Union High School District No. 82			<u>11,476,304</u>
Total Direct and Overlapping Governmental Activities Debt			<u><u>\$ 99,445,145</u></u>

**DIRECT AND OVERLAPPING GENERAL BONDED DEBT RATIOS**

Net Direct General Obligation Bonded Debt		
As a Percentage of Net Limited Assessed Valuation		1.52 %
Net Direct and Overlapping General Bonded Debt		
Per Capita	\$ 1,231	
As a Percentage of Net Limited Assessed Valuation		15.42 %
As a Percentage of Gross Full Cash Value		1.43 %

**Source:** The source of this information is the District's records and the State and County Abstract of the Assessment Roll, Arizona Department of Revenue, and the applicable governmental unit.

- Notes:**
- 1) Estimated percentage of debt outstanding applicable to the District is calculated based on the a portion of the District's net limited assessed valuation as a percentage of the net limited assessed valuation of the overlapping jurisdiction.
  - 2) Outstanding debt as of June 30, 2021 is presented for the overlapping governments as this is the most recent available information.

**CASA GRANDE UNION HIGH SCHOOL DISTRICT NO. 82  
LEGAL DEBT MARGIN INFORMATION  
LAST TEN FISCAL YEARS**

**Class B Bond Legal Debt Margin Calculation for Fiscal Year 2022:**

Net full cash assessed valuation	\$ 758,856,004
Debt limit (10% of assessed value)	75,885,600
Debt applicable to limit	<u>10,330,000</u>
Legal debt margin	<u><u>\$ 65,555,600</u></u>

**Total Legal Debt Margin Calculation for Fiscal Year 2022:**

Net full cash assessed valuation	\$ 758,856,004
Debt limit (15% of assessed value)	113,828,401
Debt applicable to limit	<u>10,330,000</u>
Legal debt margin	<u><u>\$ 103,498,401</u></u>

**Fiscal Year Ended June 30**

	<u>2022</u>	<u>2021</u>	<u>2020</u>	<u>2019</u>	<u>2018</u>
Debt Limit	\$ 113,828,401	\$ 107,654,905	\$ 102,757,530	\$ 94,921,750	\$ 92,914,382
Total net debt applicable to limit	<u>10,330,000</u>	<u>12,635,000</u>	<u>14,865,000</u>	<u>17,060,000</u>	<u>19,155,000</u>
Legal debt margin	<u><u>\$ 103,498,401</u></u>	<u><u>\$ 95,019,905</u></u>	<u><u>\$ 87,892,530</u></u>	<u><u>\$ 77,861,750</u></u>	<u><u>\$ 73,759,382</u></u>
Total net debt applicable to the limit as a percentage of debt limit	9%	12%	14%	18%	21%

	<u>2017</u>	<u>2016</u>	<u>2015</u>	<u>2014</u>	<u>2013</u>
Debt Limit	\$ 90,423,778	\$ 88,502,474	\$ 76,886,856	\$ 76,888,484	\$ 84,801,774
Total net debt applicable to limit	<u>21,190,000</u>	<u>23,130,000</u>	<u>24,995,000</u>	<u>27,045,000</u>	<u>30,330,000</u>
Legal debt margin	<u><u>\$ 69,233,778</u></u>	<u><u>\$ 65,372,474</u></u>	<u><u>\$ 51,891,856</u></u>	<u><u>\$ 49,843,484</u></u>	<u><u>\$ 54,471,774</u></u>
Total net debt applicable to the limit as a percentage of debt limit	23%	26%	33%	35%	36%

**Source:** The source of this information is the District's financial records.

- Notes:** 1) The District's general obligation bonds are subject to two limits; the Constitutional debt limit (total debt limit) on all general obligation bonds outstanding and the statutory debt limit on Class B bonds outstanding. The calculations of the debt margins are presented in detail for the current fiscal year only.
- 2) Prior to FY17, net bond premium was restricted by amount and not subject to the statutory debt limit. Beginning with FY17, any additional net premium used for capital projects, bond counsel, printing and preparation of offering documents, a financial advisor, paying agent costs or to pay down debt is counted against both debt limits with the exception of amounts of premium deposited into the Debt Service Fund or a refunding escrow to pay interest payments.

**CASA GRANDE UNION HIGH SCHOOL DISTRICT NO. 82  
COUNTY-WIDE DEMOGRAPHIC AND ECONOMIC STATISTICS  
LAST TEN CALENDAR YEARS**

<u>Year</u>	<u>Population</u>	<u>Personal Income (thousands)</u>	<u>Per Capita Income</u>	<u>Unemployment Rate</u>	<u>Estimated District Population</u>
2021	439,128	\$ 19,687,597	\$ 43,793	4.7 %	79,305
2020	467,932	17,285,148	35,949	7.2	53,658
2019	455,210	14,893,430	32,182	4.4	58,632
2018	440,591	13,701,923	30,644	5.0	69,574
2017	427,603	12,609,714	29,309	5.0	71,000
2016	413,312	11,689,781	27,930	5.5	70,165
2015	401,918	11,255,255	27,682	6.3	68,500
2014	396,237	10,387,778	25,846	7.2	67,500
2013	389,813	9,932,684	25,511	8.6	67,000
2012	389,192	9,619,961	24,834	9.4	66,500

**Sources:** The source of the "Personal Income" and "Per Capita" information is the Bureau of Economic Analysis.  
The source of the "Population" and "Unemployment Rate" information is the Arizona Office of Employment and Population Statistics.  
The source of the District Population is the US Census Bureau.

**CASA GRANDE UNION HIGH SCHOOL DISTRICT NO. 82  
PRINCIPAL EMPLOYERS  
CURRENT FISCAL YEAR AND FISCAL YEAR NINE YEARS PRIOR**

<u>Employer</u>	<u>2022</u>		<u>2013</u>	
	<u>Employees</u>	<u>Percentage of Total Employment</u>	<u>Employees</u>	<u>Percentage of Total Employment</u>
Pinal County	2,920	4.74 %		%
State of Arizona	2,500	4.06		
Corecivic	1,980	3.22		
Wal-Mart Stores, Inc.	1,750	2.84	440	1.19
Banner Health	730	1.19		
Gila River Indian Community	790	1.28		
Harrah's Ak-Chin Casino	800	1.30		
Frys Food Stores	680	1.10		
Maricopa Unified School District No. 20	670	1.09		
Casa Grande Union High School District No. 82	970	1.58		
Casa Grande Elementary School District No. 4			980	2.65
Casa Grande Regional Medical Center			819	2.21
Wal-Mart Distribution Center			580	1.57
Frito Lay, Inc.			370	1.00
Abbott Laboratorise/Ross Products Division			380	1.03
City of Casa Grande			376	1.02
Central Arizona College			350	0.95
Sun Life Family Health Center			310	0.84
National Vitamin Company			350	0.95
Total	<u>13,790</u>	<u>22.40 %</u>	<u>4,955</u>	<u>13.41 %</u>
Total employment	<u>61,570</u>		<u>37,000</u>	

**Source:** The source of this information is The Maricopa Association of Governments, *The Arizona Industrial Directory*, The Greater Phoenix Chamber of Commerce, The Greater Casa Grande Valley Economic Development Foundation, and an individual employer survey.

**CASA GRANDE UNION HIGH SCHOOL DISTRICT NO. 82  
FULL-TIME EQUIVALENT DISTRICT EMPLOYEES BY TYPE  
LAST TEN FISCAL YEARS**

	<b>Full-time Equivalent Employees as of June 30</b>				
	<u>2022</u>	<u>2021</u>	<u>2020</u>	<u>2019</u>	<u>2018</u>
<b>Supervisory</b>					
Principals	3	2	2	2	2
Assistant principals	6	4	3	2	1
Total supervisory	<u>9</u>	<u>6</u>	<u>5</u>	<u>4</u>	<u>3</u>
<b>Instruction</b>					
Teachers	185	155	155	162	152
Other professionals (instructional)	24	24	28	29	26
Aides	45	34	45	43	34
Total instruction	<u>254</u>	<u>213</u>	<u>228</u>	<u>234</u>	<u>212</u>
<b>Student Services</b>					
Librarians	1	1	1	1	1
Technicians	14	11	8	8	6
Total student services	<u>15</u>	<u>12</u>	<u>9</u>	<u>9</u>	<u>7</u>
<b>Support and Administration</b>					
Service workers	111	115	114	112	109
Total support and administration	<u>111</u>	<u>115</u>	<u>114</u>	<u>112</u>	<u>109</u>
<b>Total</b>	<u><u>389</u></u>	<u><u>346</u></u>	<u><u>356</u></u>	<u><u>359</u></u>	<u><u>331</u></u>

(Continued)

**CASA GRANDE UNION HIGH SCHOOL DISTRICT NO. 82  
FULL-TIME EQUIVALENT DISTRICT EMPLOYEES BY TYPE  
LAST TEN FISCAL YEARS**

	<u>2017</u>	<u>2016</u>	<u>2015</u>	<u>2014</u>	<u>2013</u>
<b>Supervisory</b>					
Principals	2	3	2	3	3
Assistant principals	1	1	1	5	4
Total supervisory	<u>3</u>	<u>4</u>	<u>3</u>	<u>8</u>	<u>7</u>
<b>Instruction</b>					
Teachers	130	139	148	143	152
Other professionals (instructional)	20	13	12	11	10
Aides	32	38	35	34	31
Total instruction	<u>182</u>	<u>190</u>	<u>195</u>	<u>188</u>	<u>193</u>
<b>Student Services</b>					
Librarians	1	1	1	1	1
Technicians	4	4	4		
Total student services	<u>5</u>	<u>5</u>	<u>5</u>	<u>1</u>	<u>1</u>
<b>Support and Administration</b>					
Service workers	103	83	84	106	92
Total support and administration	<u>103</u>	<u>83</u>	<u>84</u>	<u>106</u>	<u>92</u>
<b>Total</b>	<u><u>293</u></u>	<u><u>282</u></u>	<u><u>287</u></u>	<u><u>303</u></u>	<u><u>293</u></u>

**Source:** The source of this information is District personnel records.

**(Concluded)**

**CASA GRANDE UNION HIGH SCHOOL DISTRICT NO. 82  
OPERATING STATISTICS  
LAST TEN FISCAL YEARS**

<b>Fiscal Year Ended June 30</b>	<b>Average Daily Membership</b>	<b>Operating Expenditures</b>	<b>Cost per Pupil</b>	<b>Percentage Change</b>	<b>Expenses</b>	<b>Cost per Pupil</b>	<b>Percentage Change</b>	<b>Teaching Staff</b>	<b>Pupil-Teacher Ratio</b>	<b>Percentage of Free/Reduced Students</b>
2022	3,754	\$ 40,103,760	\$ 10,684	7.69 %	\$ 45,071,446	\$ 12,008	2.25 %	254	14.8	54.5 %
2021	3,547	35,189,883	9,921	(1.13)	41,652,169	11,743	(0.36)	213	16.7	54.5
2020	3,547	35,592,325	10,034	5.28	41,804,757	11,786	9.87	228	15.6	54.5
2019	3,497	33,330,441	9,531	7.51	37,513,805	10,727	6.93	234	14.9	57.0
2018	3,510	31,119,742	8,866	1.83	35,215,325	10,032	7.63	212	16.6	61.0
2017	3,554	30,942,560	8,706	10.09	33,127,637	9,321	(0.10)	182	19.5	60.0
2016	3,605	28,506,613	7,908	(7.37)	33,635,627	9,331	(7.12)	190	19.0	59.0
2015	3,554	30,342,769	8,538	3.99	35,704,329	10,046	5.97	195	18.2	59.0
2014	3,539	29,055,366	8,210	1.04	33,549,483	9,480	(7.28)	188	18.8	61.0
2013	3,427	27,846,601	8,126	(0.49)	35,040,239	10,225	9.51	193	17.8	62.8

**Source:** The source of this information is the District's financial records.

**Note:** Operating expenditures are total expenditures less debt service and capital outlay.

**CASA GRANDE UNION HIGH SCHOOL DISTRICT NO. 82  
CAPITAL ASSETS INFORMATION  
LAST TEN FISCAL YEARS**

	<b>Fiscal Year Ended June 30</b>									
	<u>2022</u>	<u>2021</u>	<u>2020</u>	<u>2019</u>	<u>2018</u>	<u>2017</u>	<u>2016</u>	<u>2015</u>	<u>2014</u>	<u>2013</u>
<b><u>Schools</u></b>										
<b><u>High</u></b>										
Buildings	3	3	3	3	3	3	3	3	3	3
Square feet	613,847	613,847	613,847	613,847	613,847	613,847	613,847	613,847	613,847	613,847
Capacity	4,893	4,893	4,893	4,893	4,893	4,893	4,893	4,893	5,000	5,000
Enrollment	3,750	3,563	3,547	3,542	3,510	3,601	3,862	3,862	3,424	3,424
<b><u>Administrative</u></b>										
Buildings	1	1	1	1	1	1	1	1	2	2
Square feet	9,904	9,904	9,904	9,904	9,904	9,904	9,904	9,904	19,808	19,808
<b><u>Athletics</u></b>										
Football fields	2	2	2	2	2	2	2	2	2	2
Soccer fields	2	2	2	2	2	2	2	2	3	3
Running tracks	2	2	2	2	2	2	2	2	2	2
Baseball/softball	4	4	4	4	4	4	4	4	8	8
Playgrounds	2	2	2	2	2	2	2	2	2	2

**Source:** The source of this information is the District's facilities records.

(This page intentionally left blank)